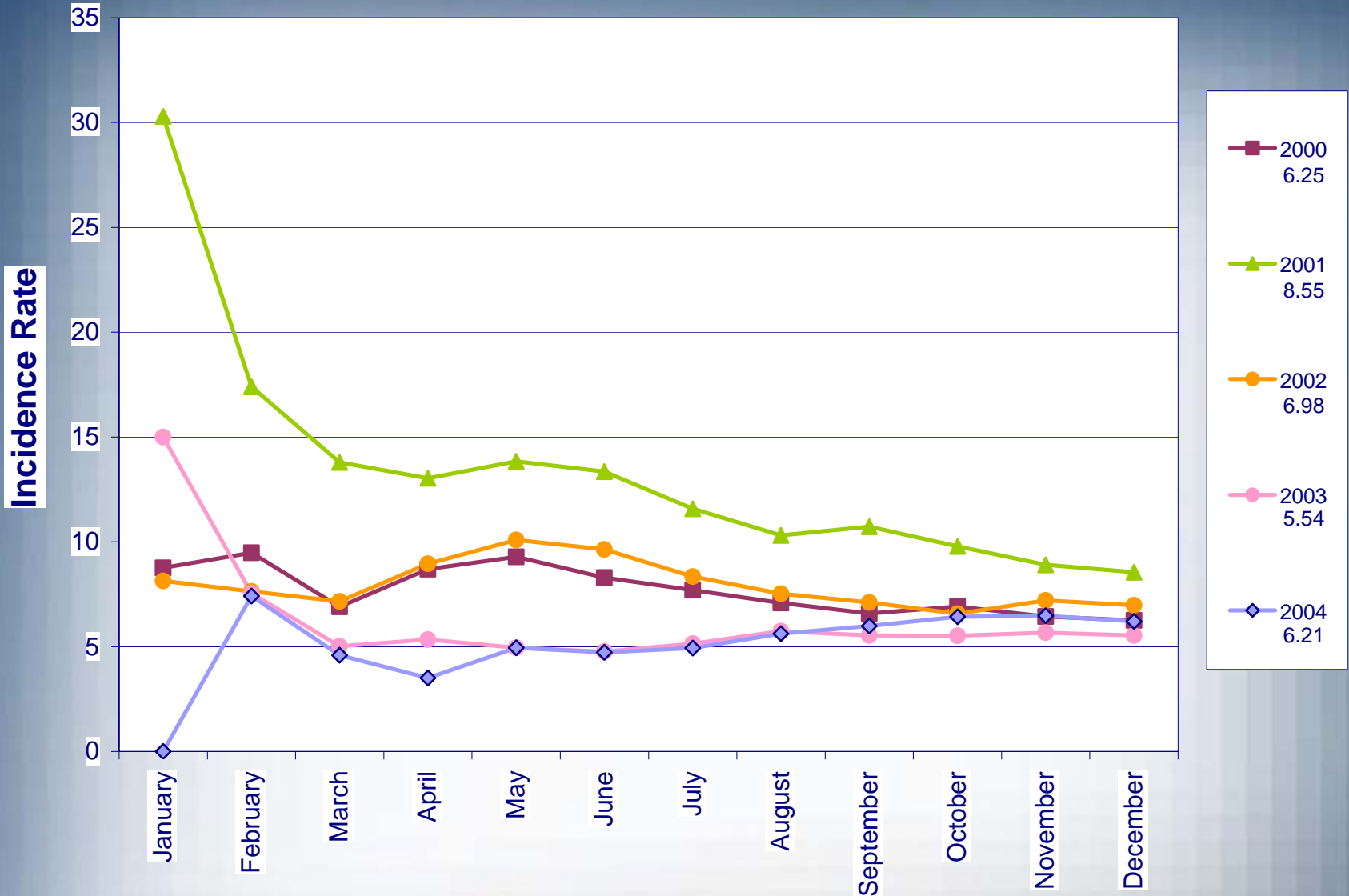


# **2004 SAFETY REPORT**

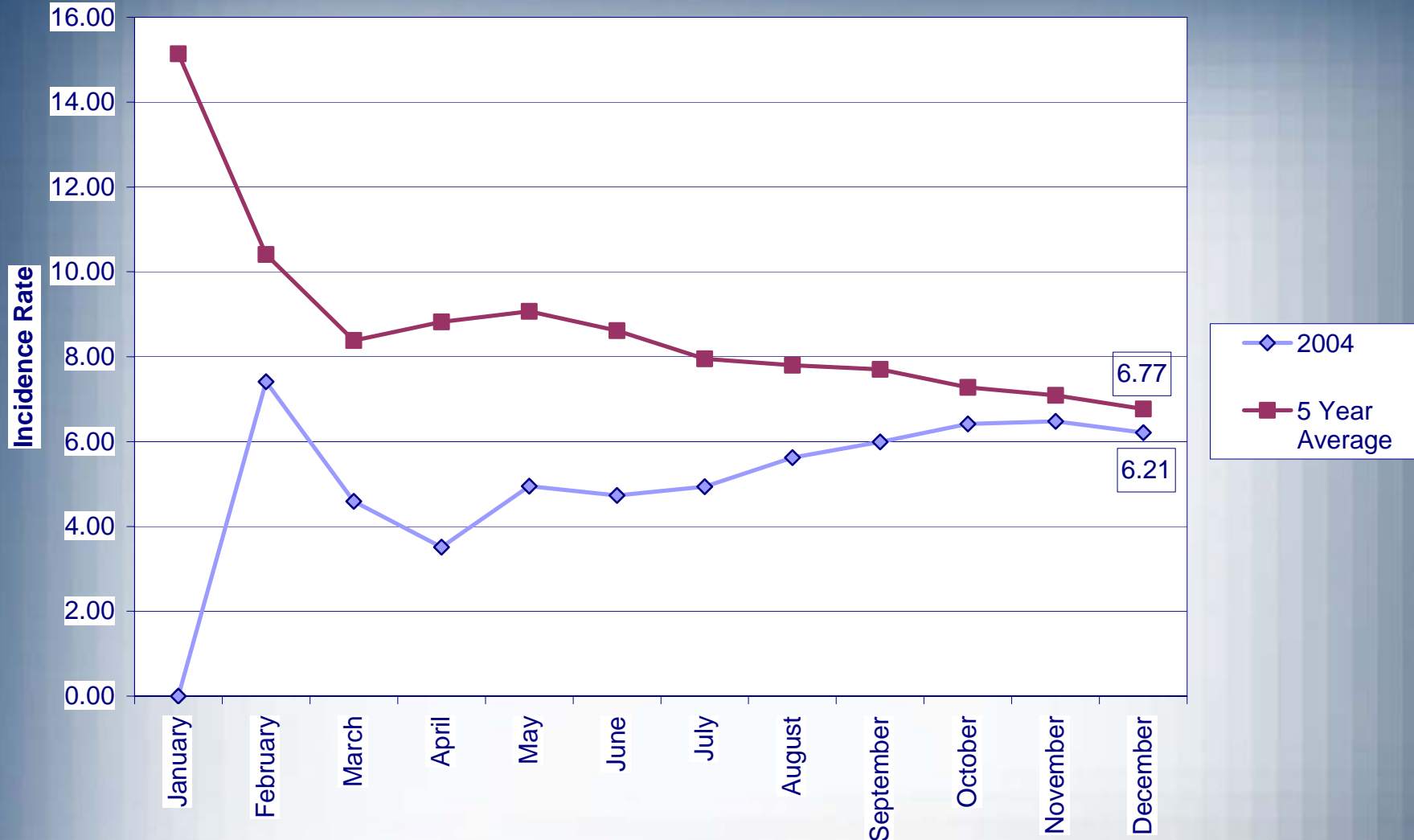
**Ken Thomas, Safety Manager, CSP, CLCP**

**January 19, 2005**

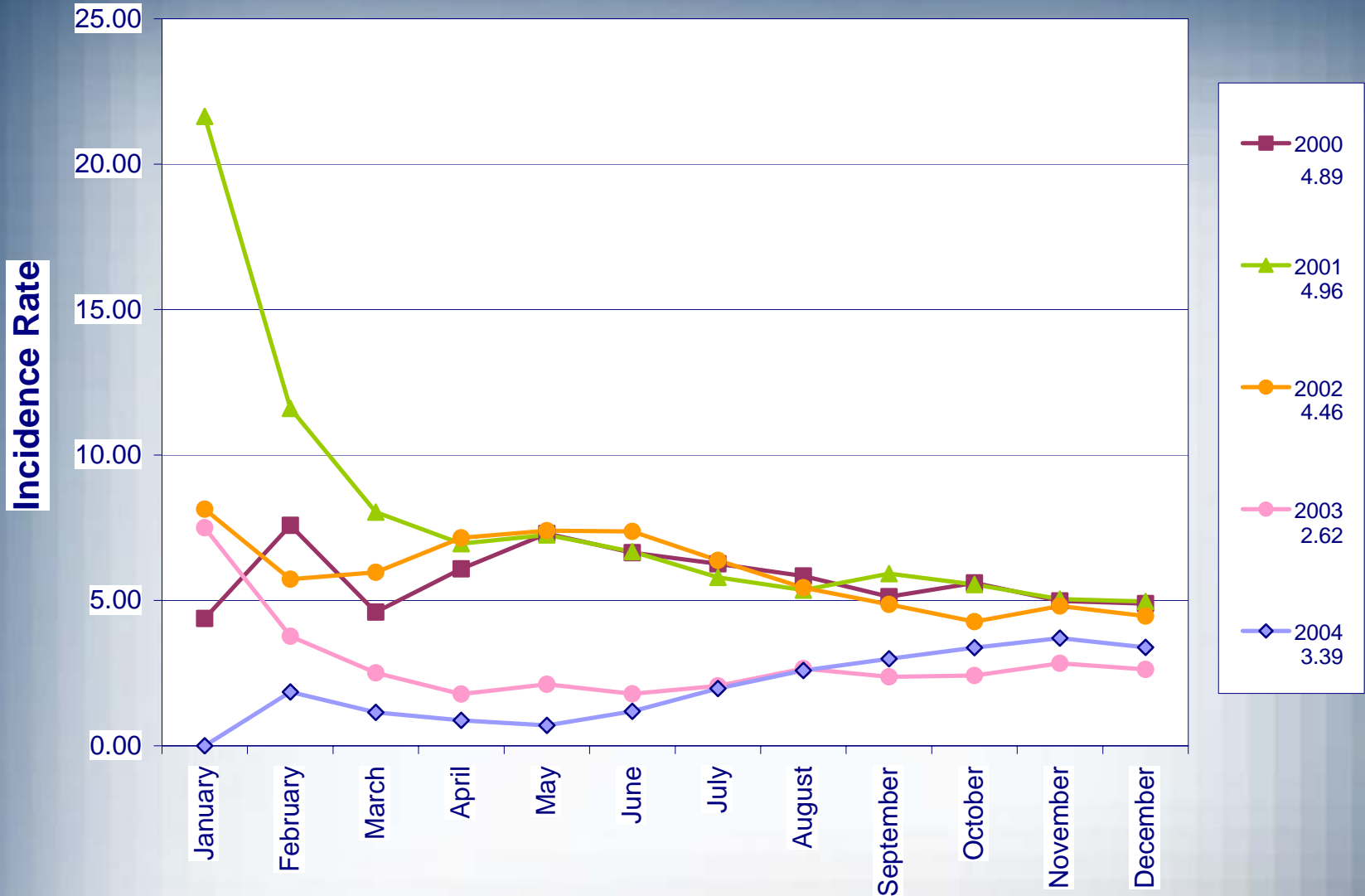
# OSHA Recordable Incidence Rate Per 100 Employees



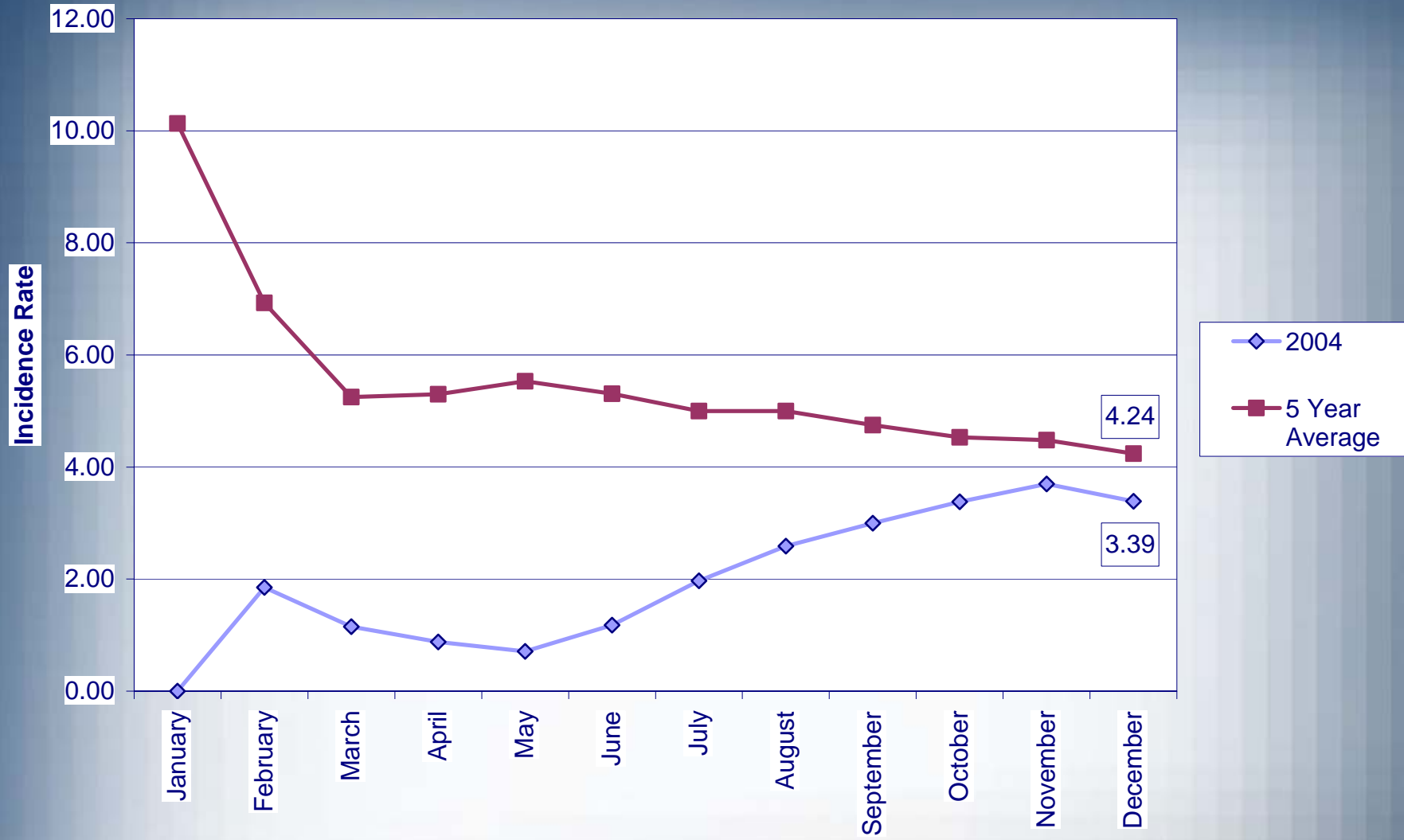
# OSHA Recordable Incidence Rate 2004 and 5 Year Average (1999-2003)



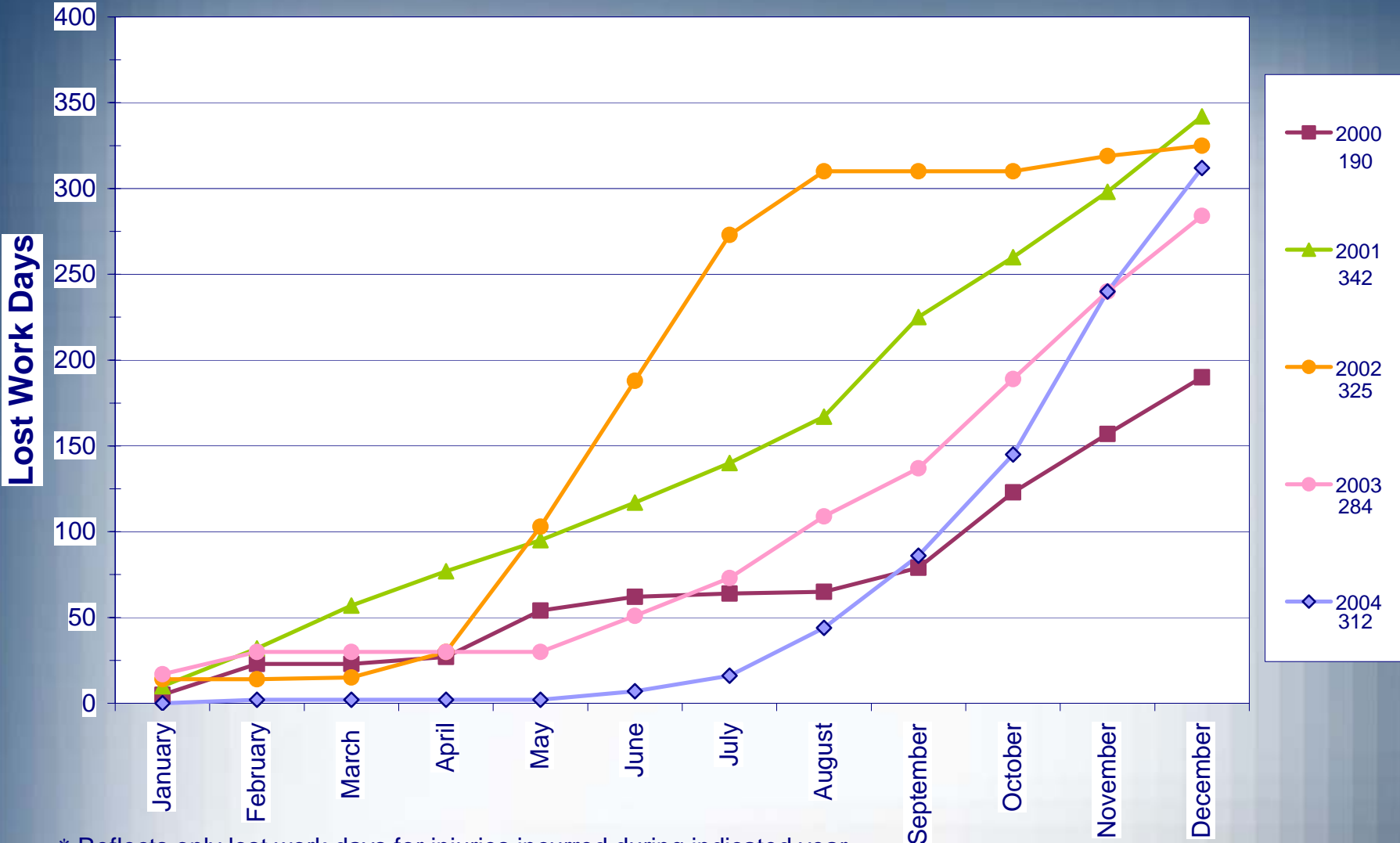
# Lost Time Recordable Incidence Rate Per 100 Employees



# Lost Time Recordable Incidence Rate 2004 and 5 Year Average (1999-2003)

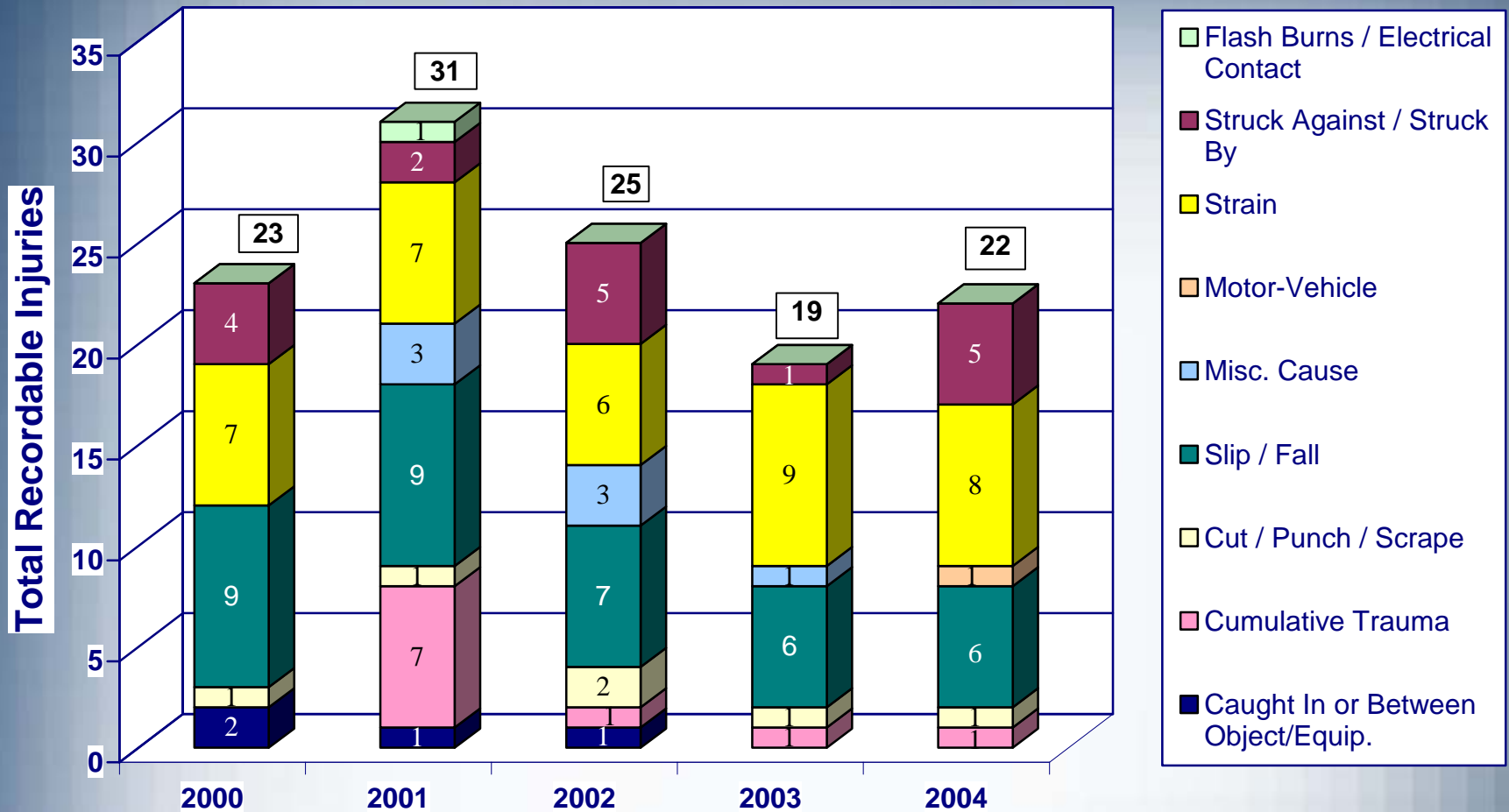


# Cumulative Number of Lost Work Days\*

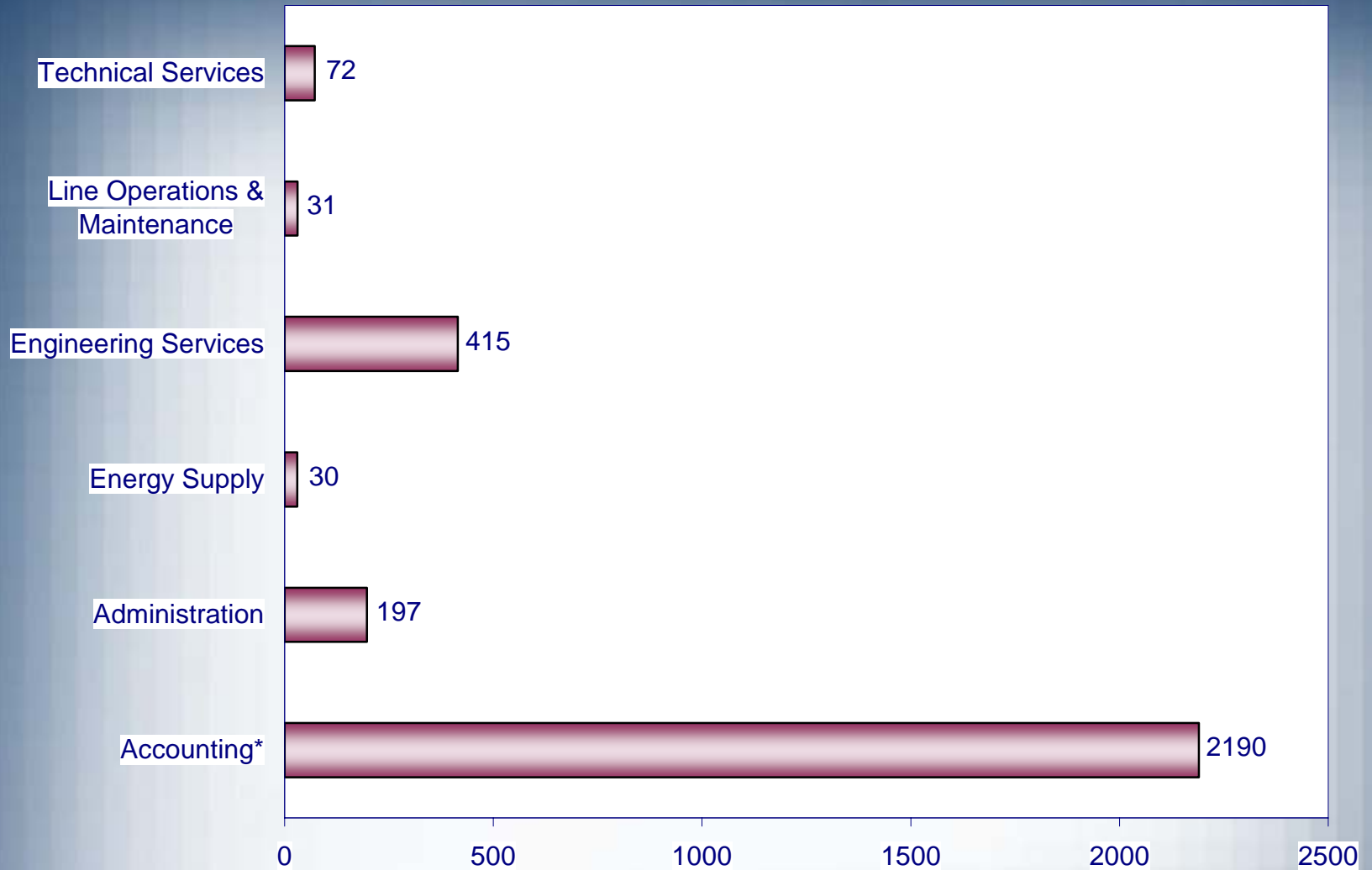


\* Reflects only lost work days for injuries incurred during indicated year

# Causes of Recordable Injuries



# Days Since Last Lost-Time Incident



\* Statistics Start January 1, 1999

# 2004 Accomplishments

- **NRECA Safety Accreditation**
- **Achieved C.E.O.'s goal for "Lost Time Rate" of 3.50**
- **Establish Safety Advisory Committee**
  - **Corporate wide– Energy Supply; Operations; Technical Services; Member Services; Human Resources; Safety**
  - **Developed direction for Safety Program - 2005**

# 2005 Safety Awareness Campaign

- **Focus on “The Big Three”**
  - **“Slips, Trips & Falls”; “Strains”; “Struck by/against”**
  - **Increased training for prevention**
  - **Increased communications – specific topics at Safety Meetings**
- **Increase jobsite presence by Safety personnel**
- **Increase emphasis on Safe Driving**
- **Focus on areas/departments most at risk**
- **Rewards program – 1<sup>st</sup> Quarter**