



2008 Safety Report

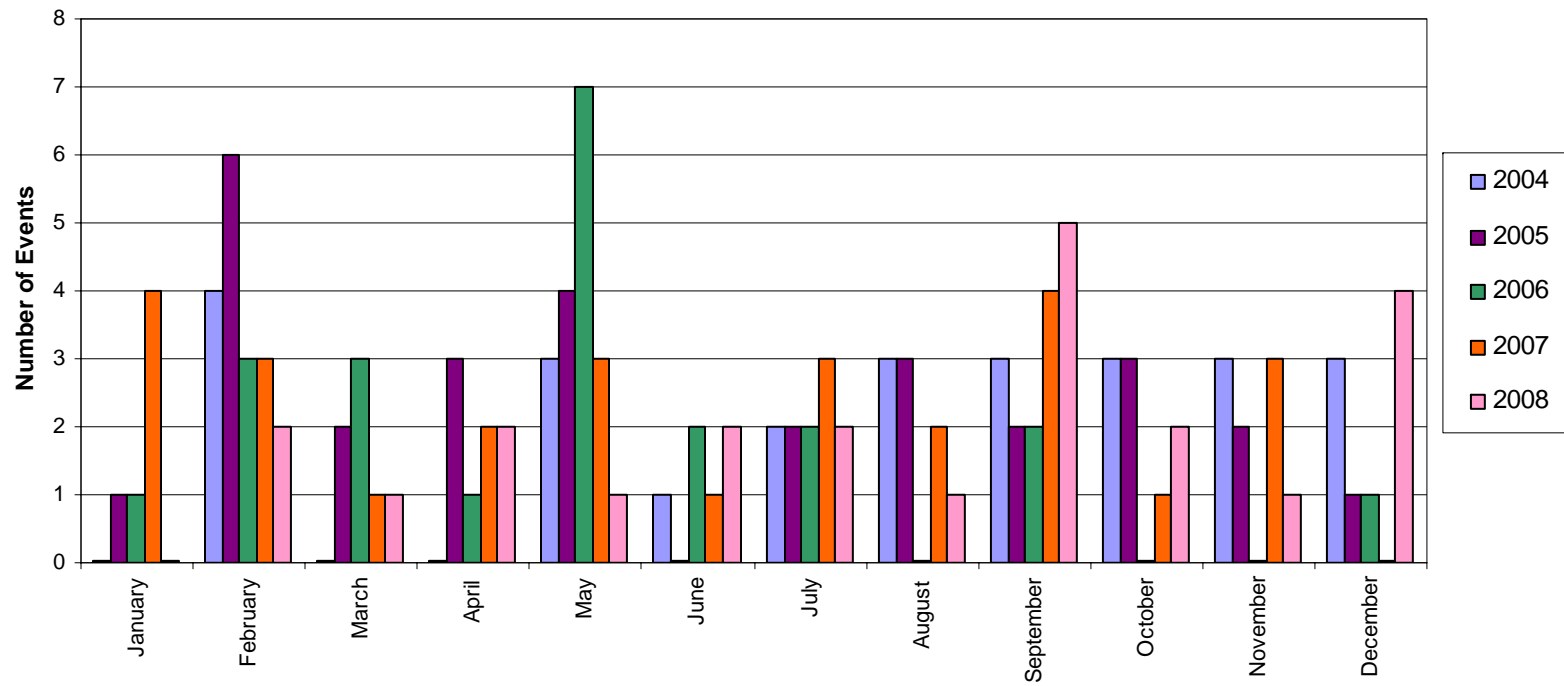
Ken Thomas, CSP, CLCP

Manager, Safety & Industrial Hygiene

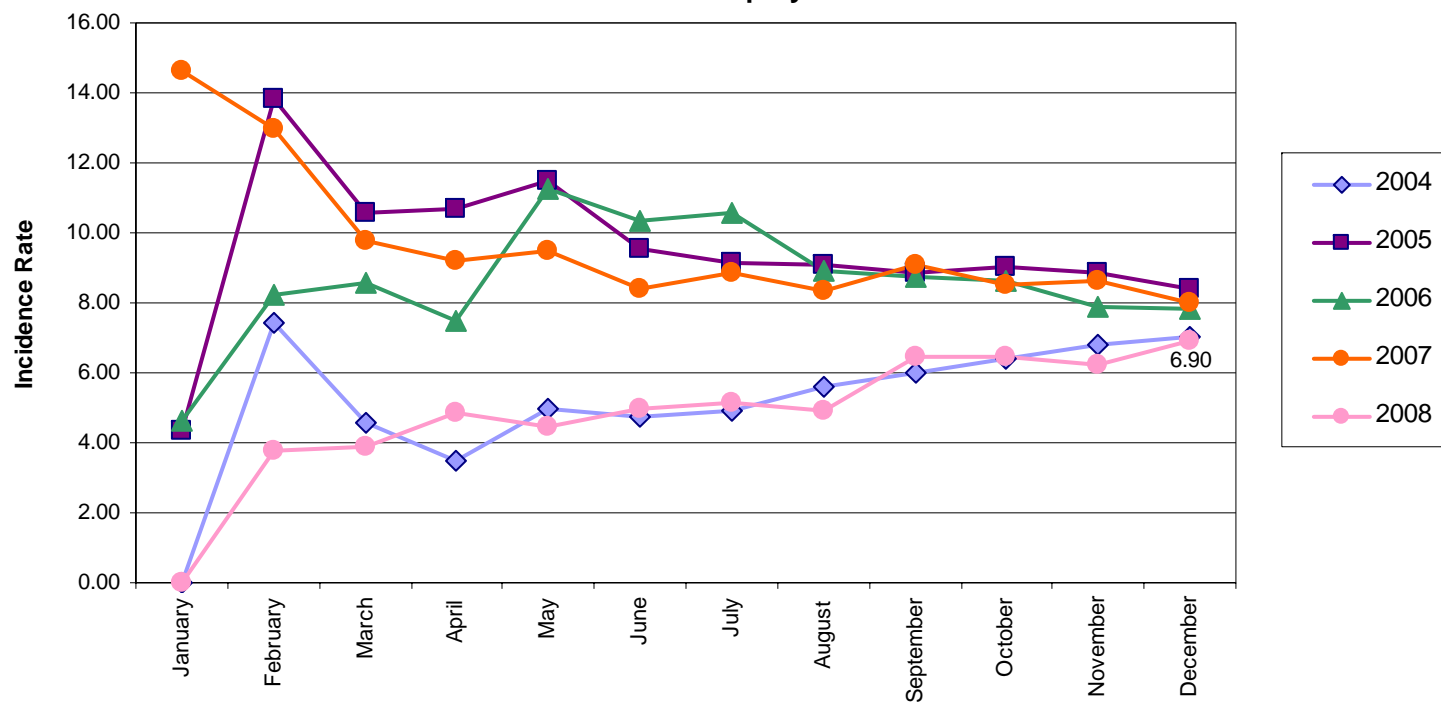
January 28, 2009



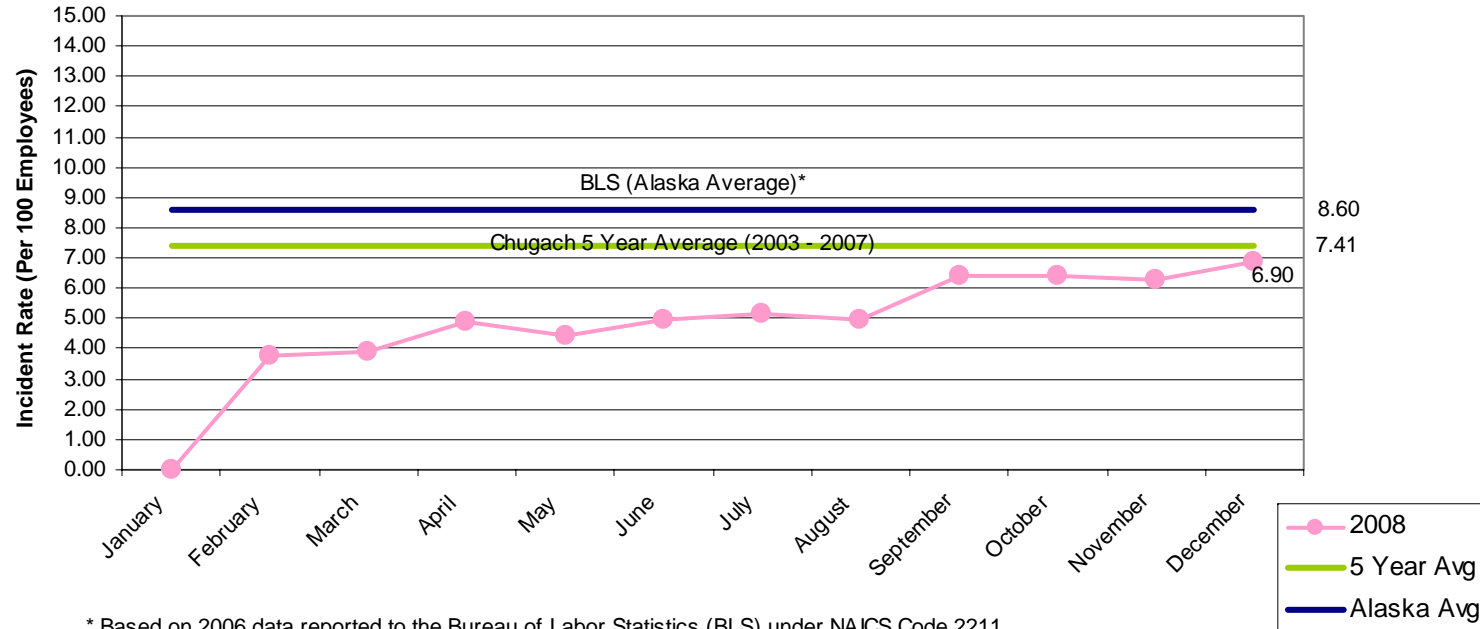
OSHA Recordable Injuries/Illnesses
December 2008



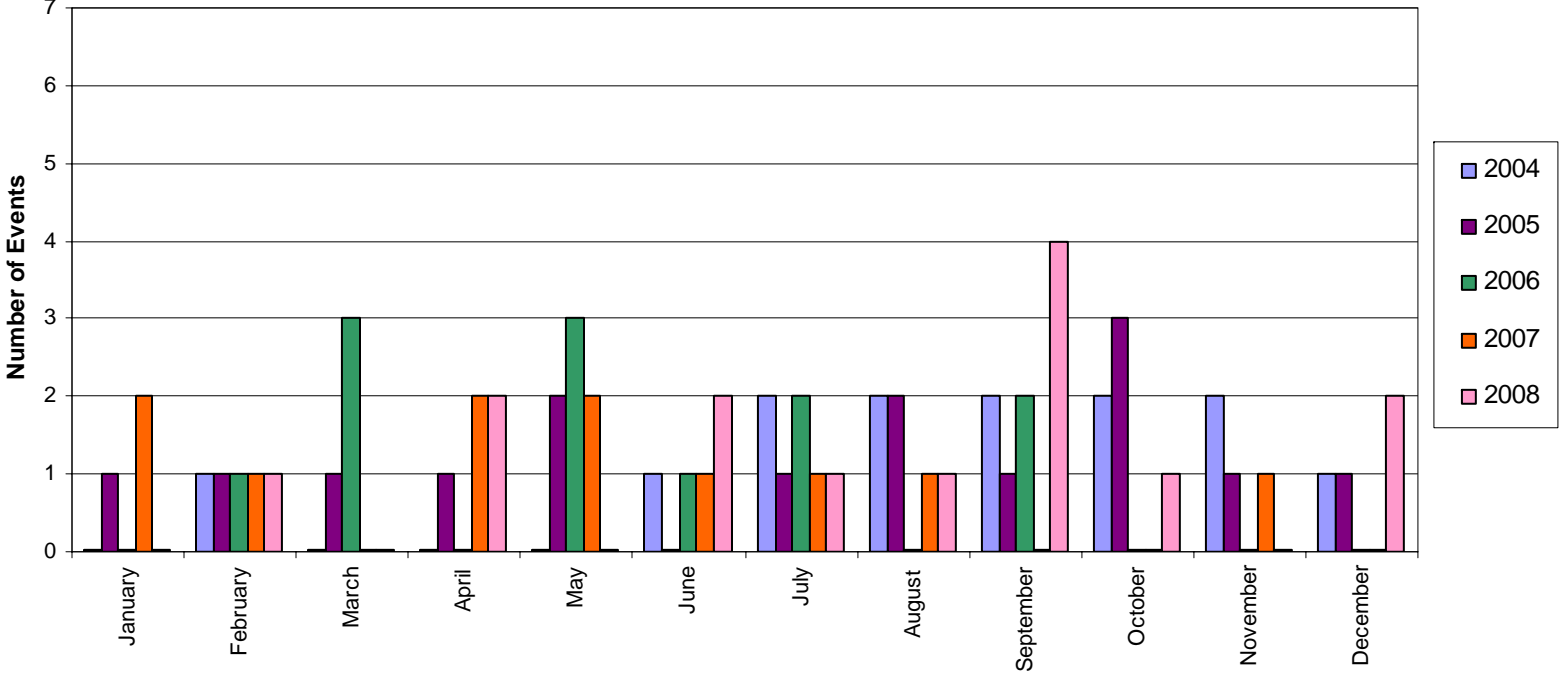
OSHA Recordable Incidence Rate
Per 100 Employees



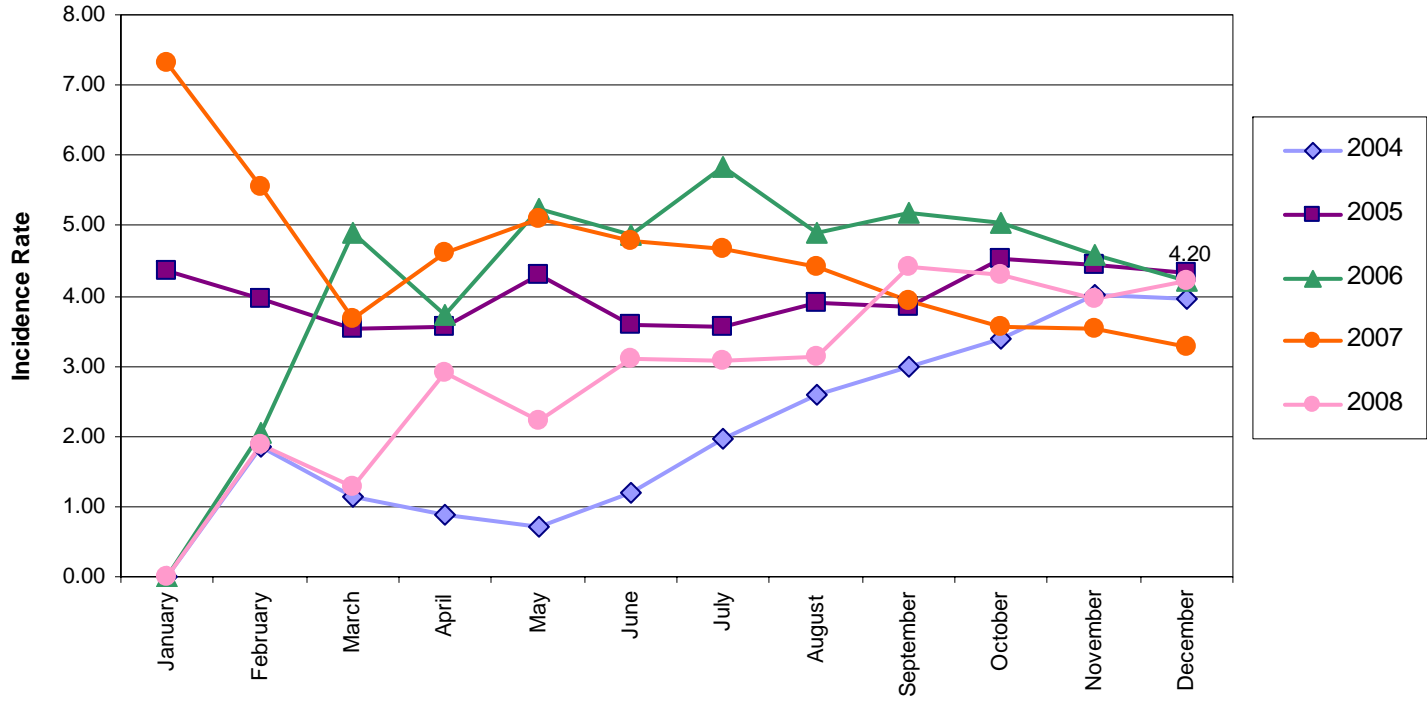
Recordable Incidence Significance of Change



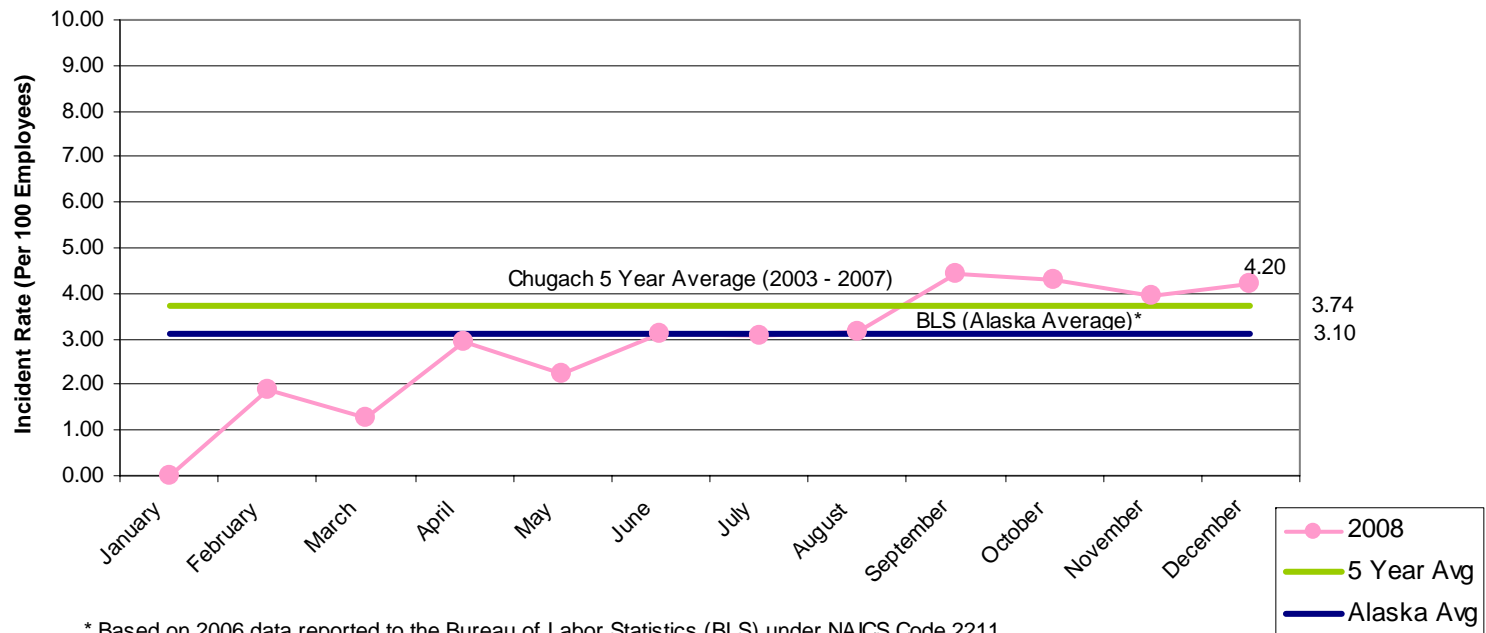
Lost Time Recordable Injuries/Illnesses
December 2008



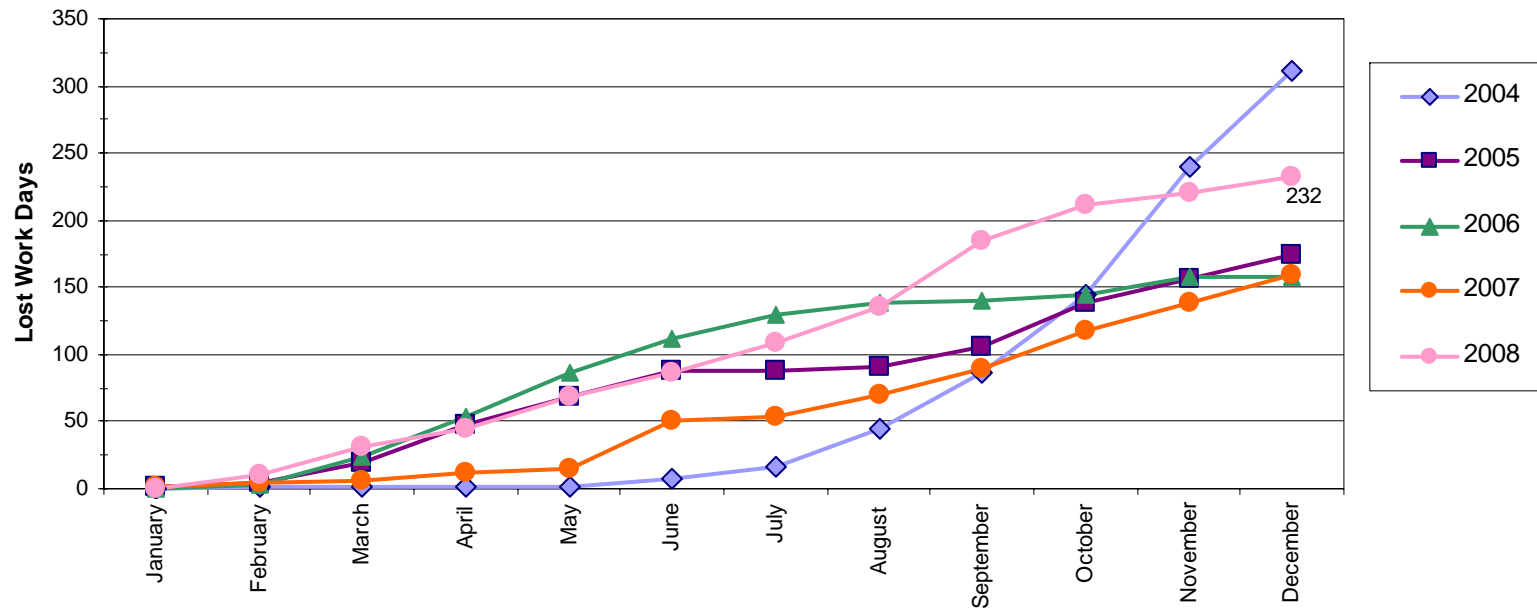
Lost Time Recordable Incidence Rate
Per 100 Employees



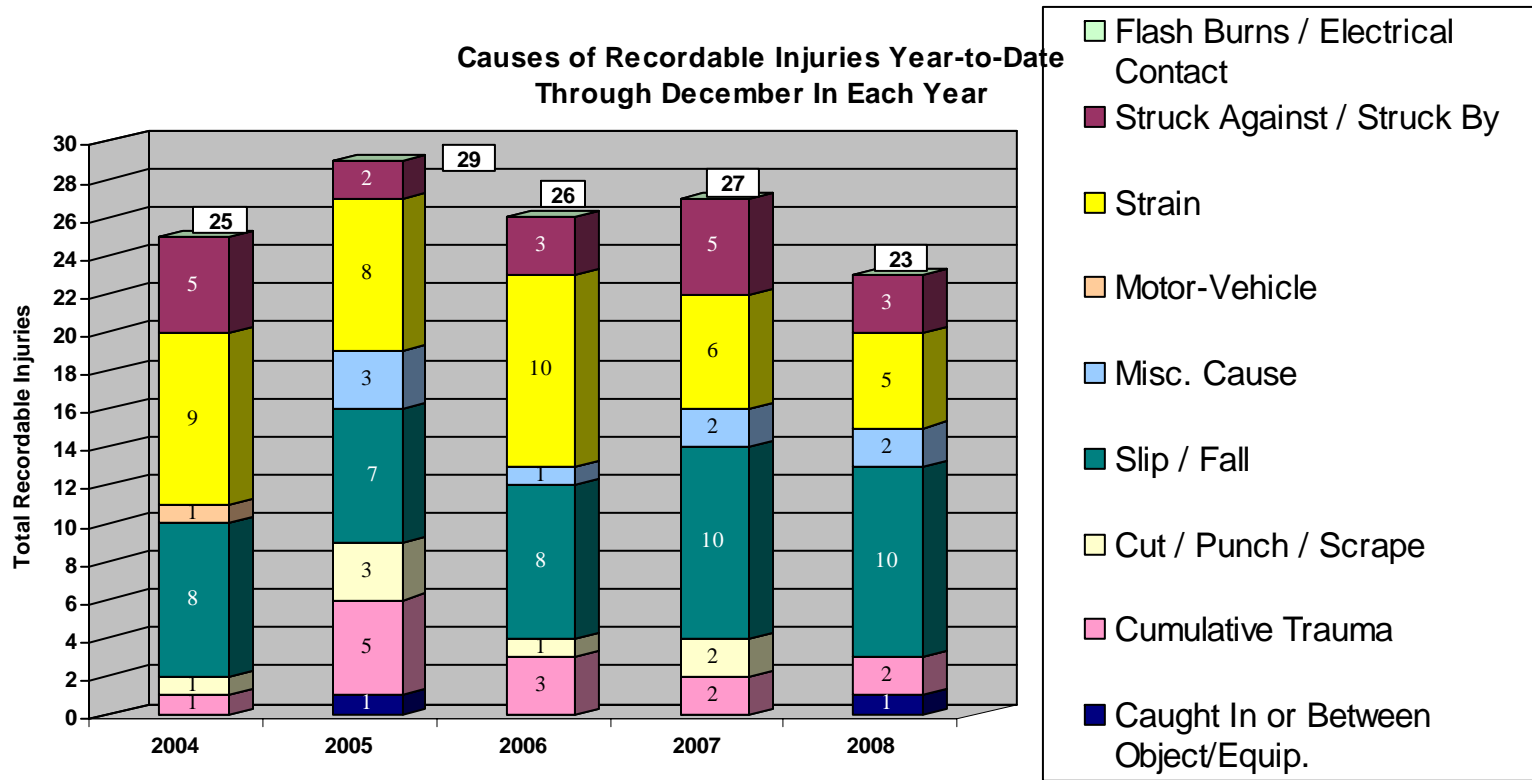
Lost Time Recordable Incidence Significance of Change



Cumulative Number of Lost Work Days*

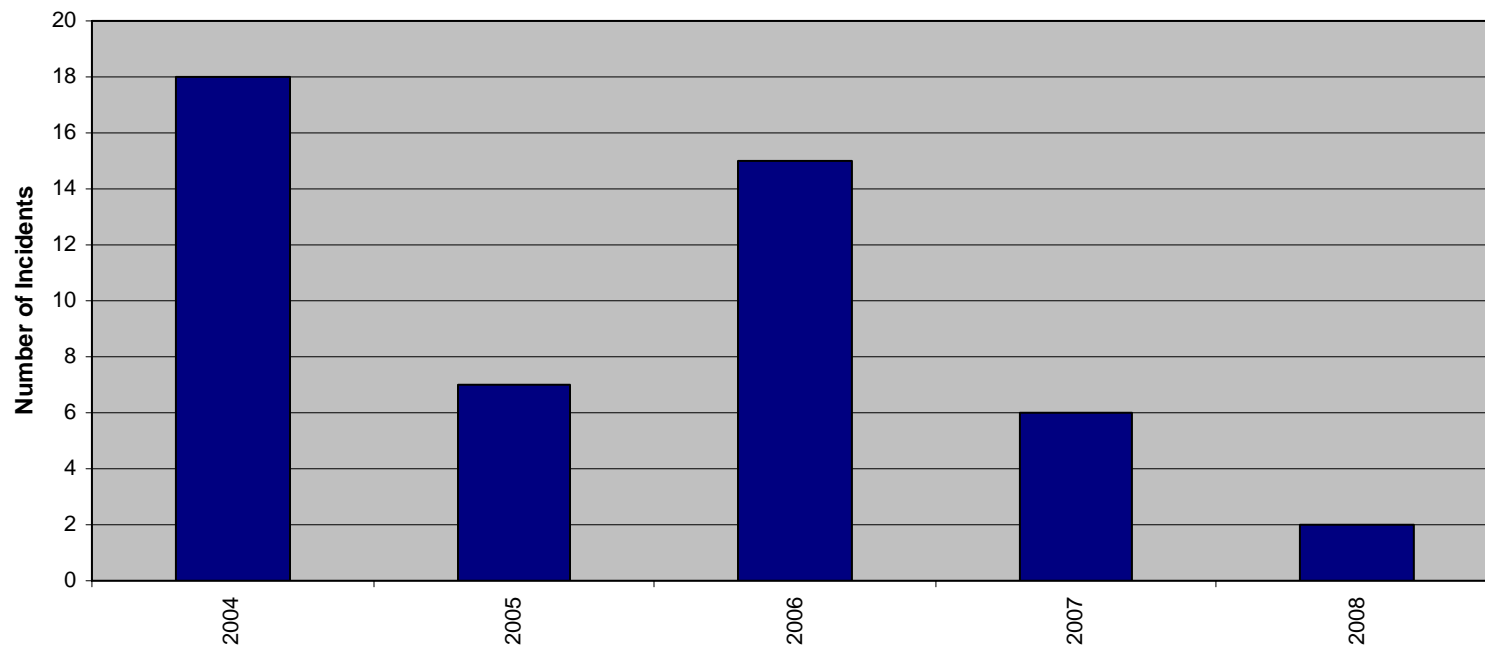


* Reflects only lost work days for injuries incurred during indicated year





Recordable Vehicle Incidents Through December in Each Year



Worker's Compensation

- Total Number of Claims Through December: 27
 - Power Delivery: 13
 - Power Supply: 12
 - Administration: 1
 - Corporate: 1

- Total Paid Through December 2008: **\$485,086**
 - 2008 Injuries: **\$174,299**
 - 2004-2007 Injuries: **\$310,787**



Questions?