

# **Beluga 230kv Transmission Line**

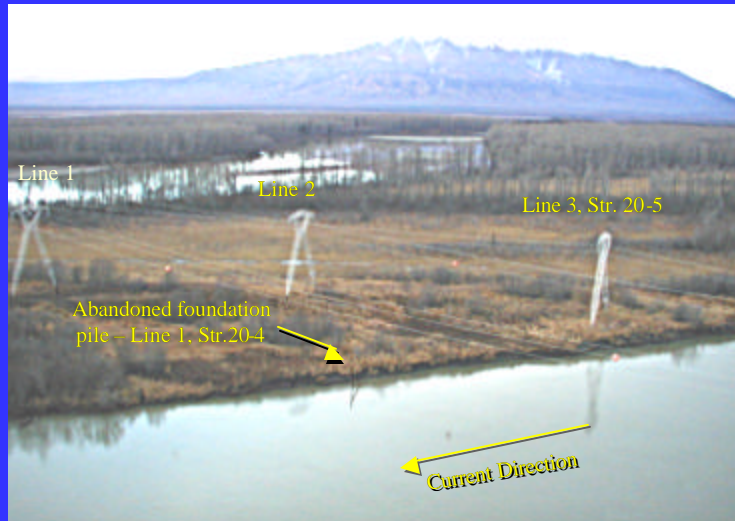
**Shawn Wendling, Project Engineer**

May 21, 2003 Board Presentation

## **Beluga 230kv Transmission Line**

Line 3, Structure 20-5 on the Susitna River needed to be moved away from the bank due to erosion near its foundation.

## Pre-Construction West Bank of Dynamite Slough



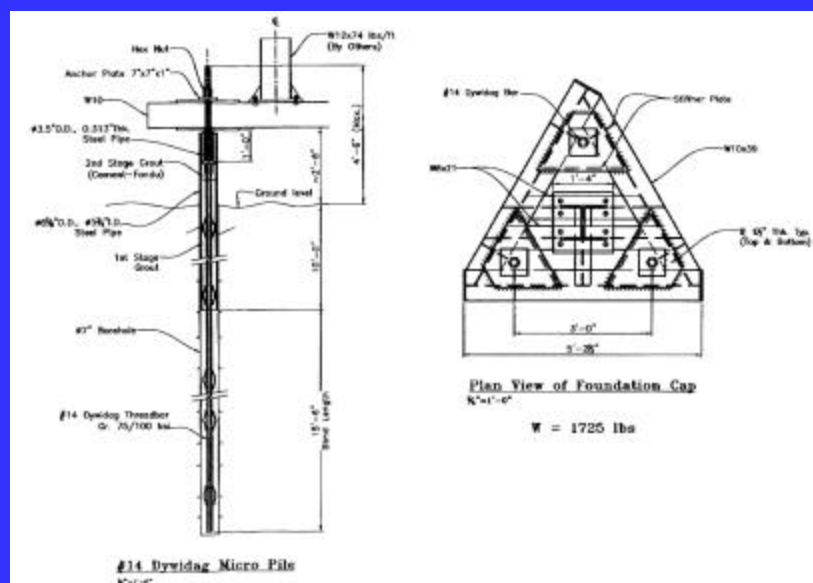
## Pre-Construction East Bank of Dynamite Slough



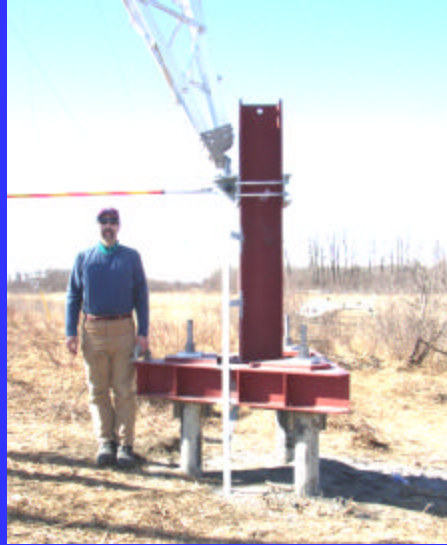
## Alternate Construction Method

- Mild winter conditions precluded installation of traditional driven H-pile foundations.
- City Electric's proposal to use Micro pile foundations allowed construction to take place without the required snow, frost and ice on rivers.

## Micro-Pile Foundation



## Line 3, Structure 20-5 Micro-Pile Foundation



## Structure 20-5 Relocation Project Cost Summary

- H-Pile Installation Bid \$314,886
- Micro-Pile Installation Bid \$354,701
- Actual Project Installed Cost \$312,422

## Post Construction East Bank of Dynamite Slough



## Post Construction West Bank of Dynamite Slough

