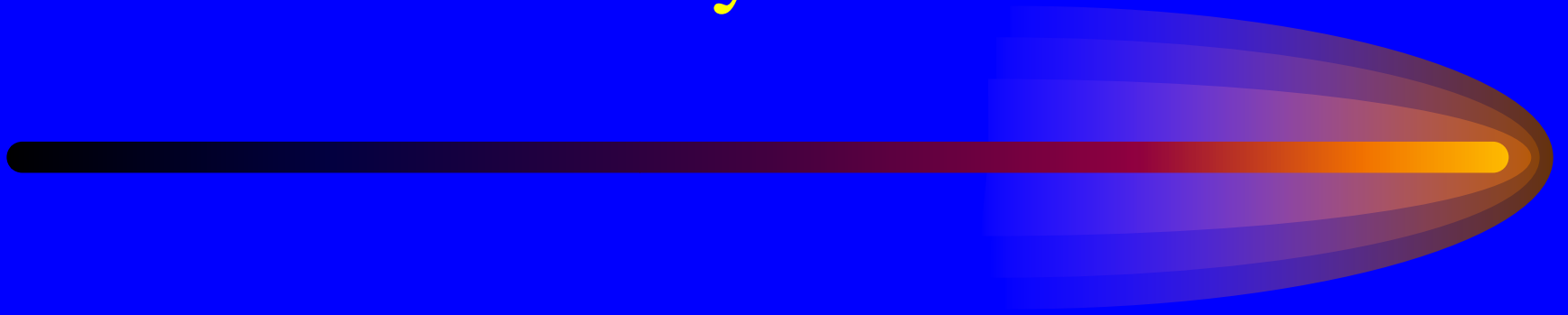


Power Control & Fuel Management Monthly Statistics

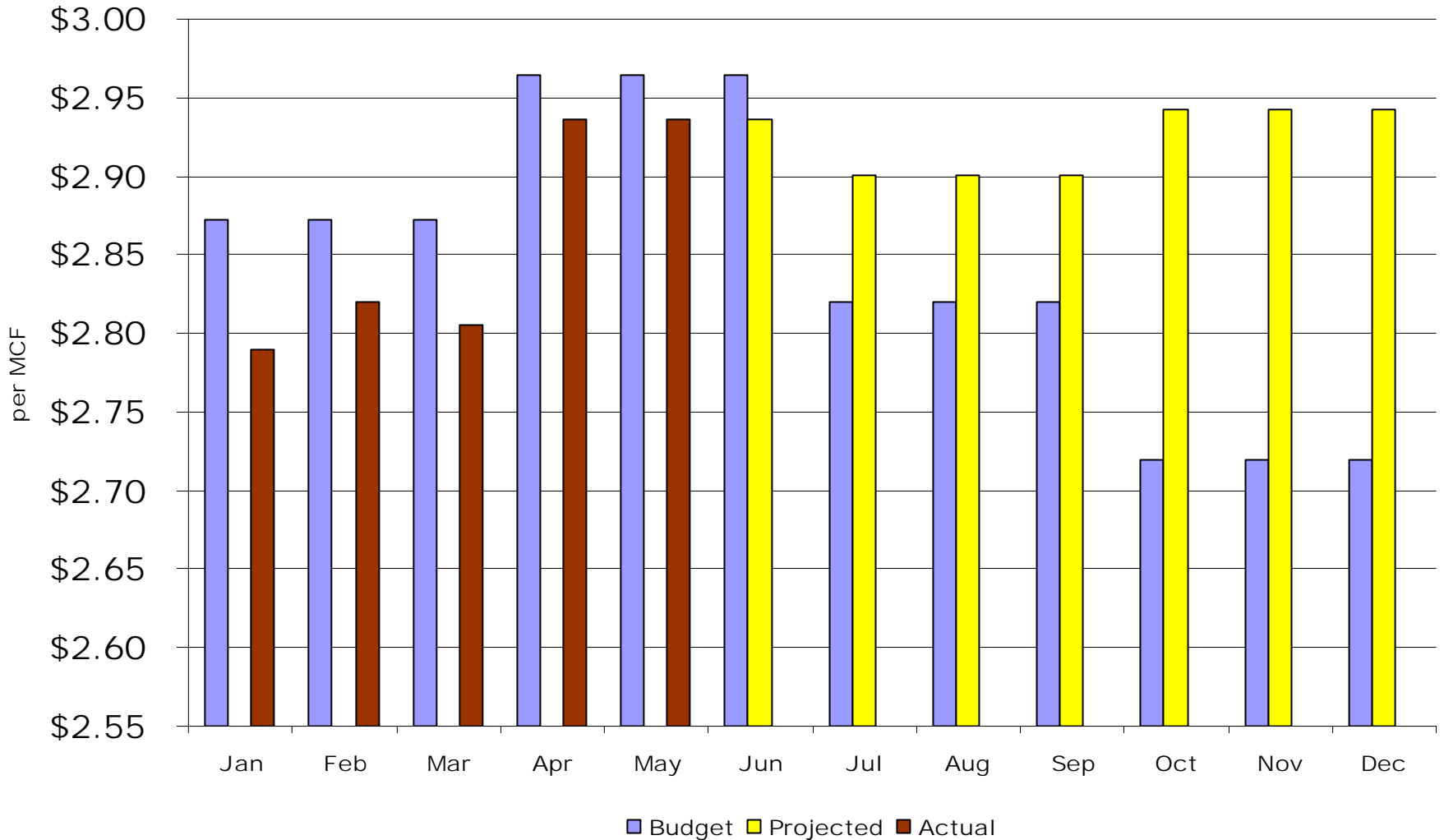


Presented to BOD

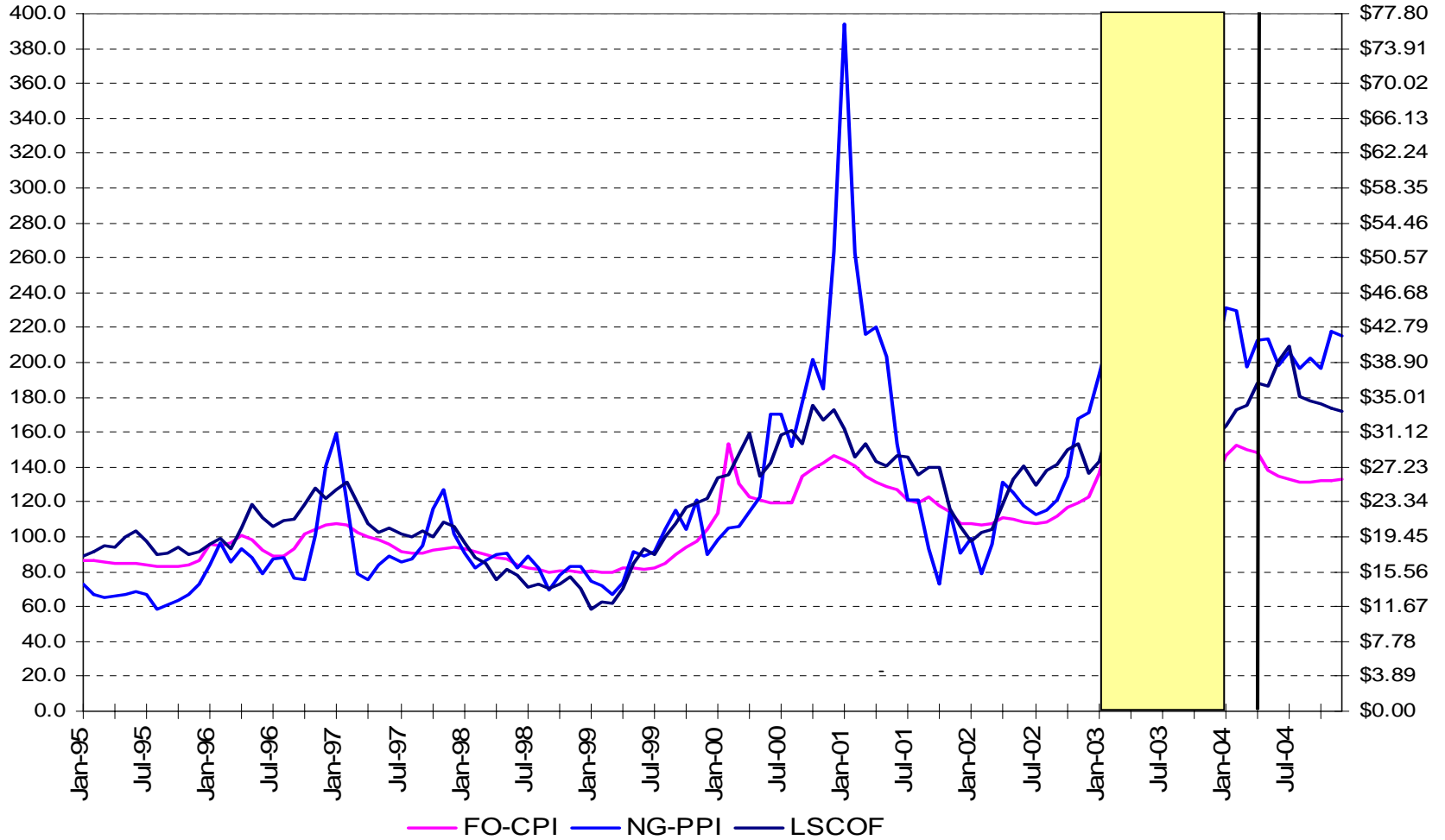
June 16, 2004

John S. Cooley, PE

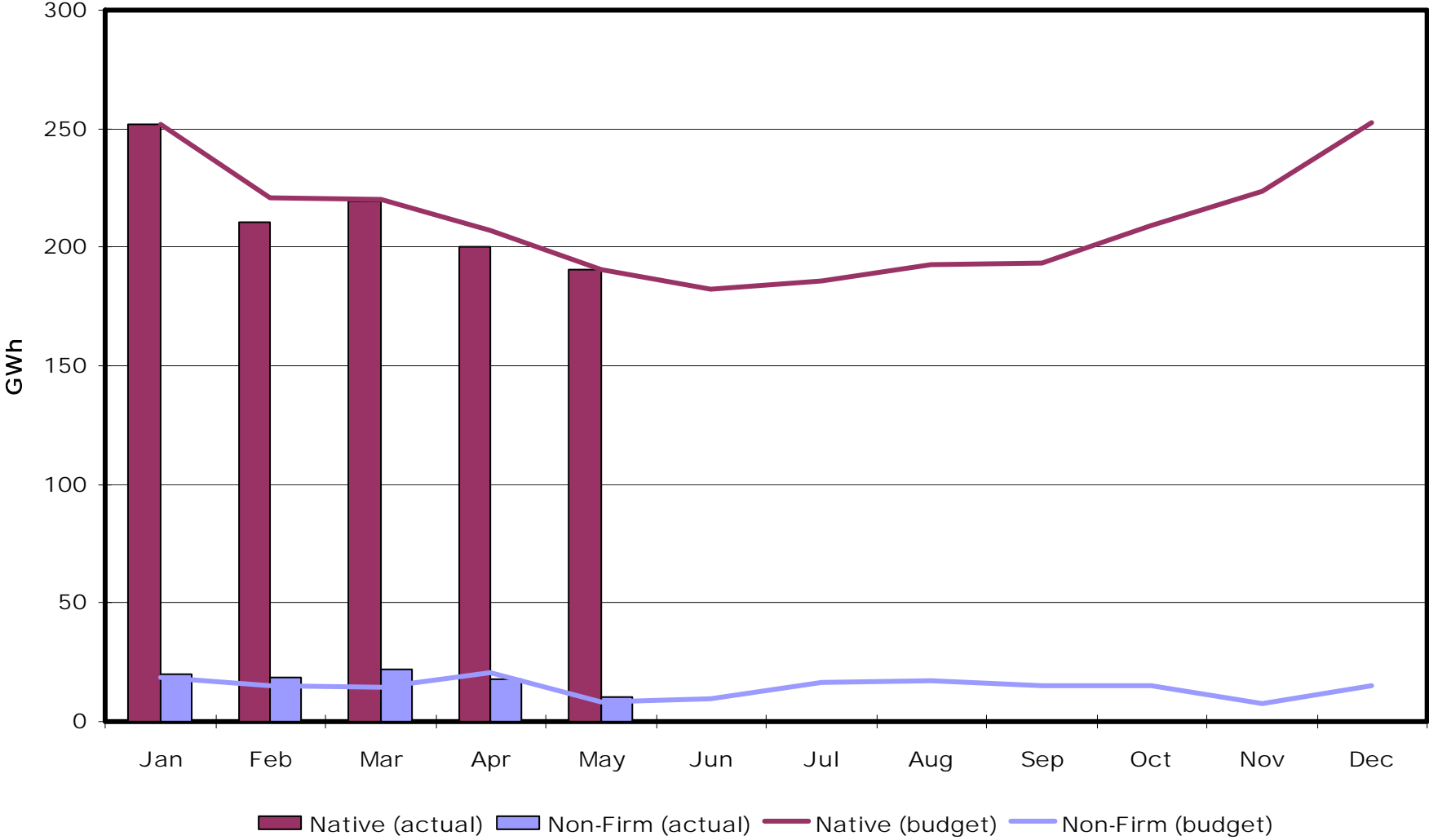
Chugach Gas Price (Marathon with taxes)



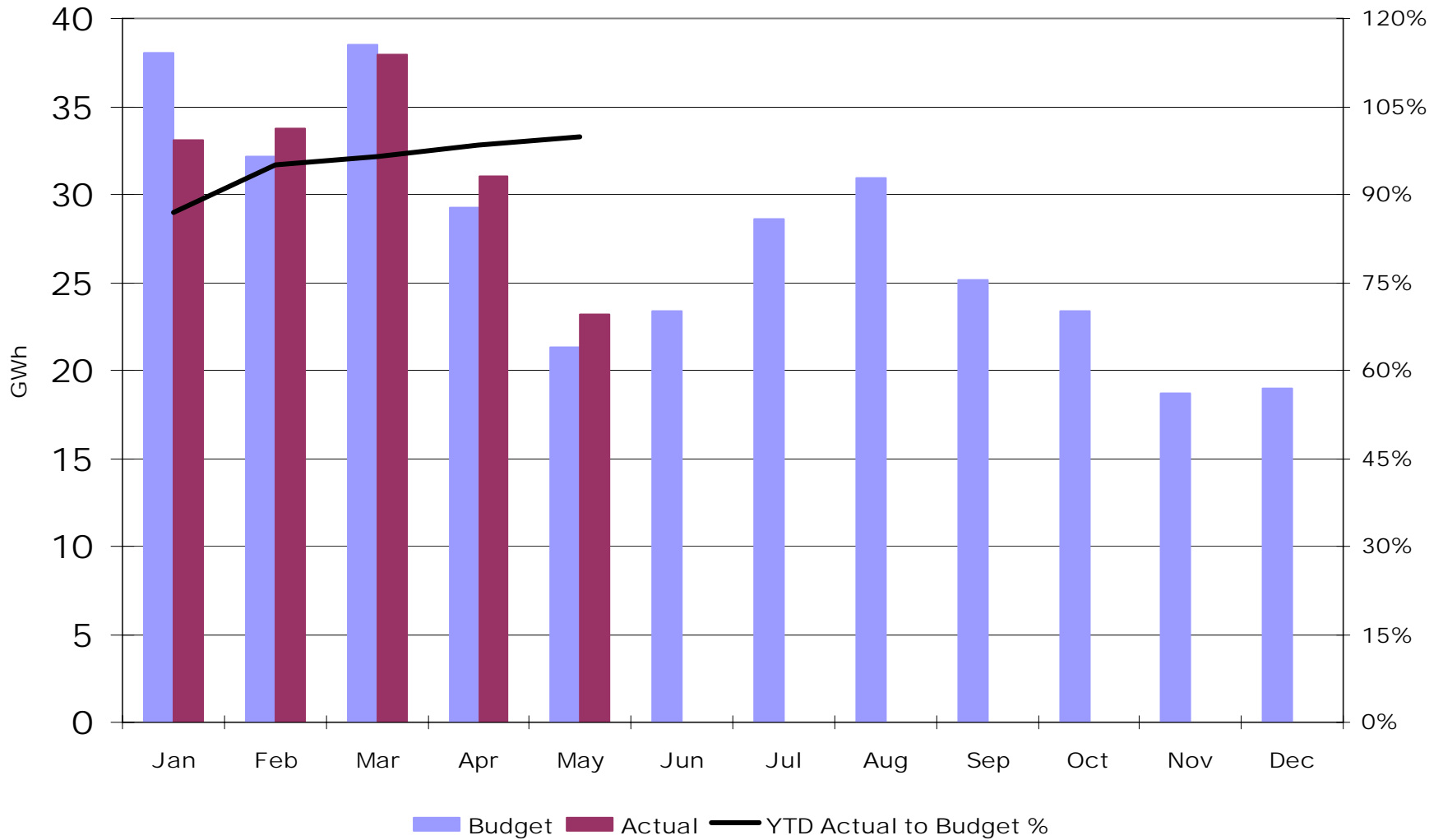
Gas Price Indices



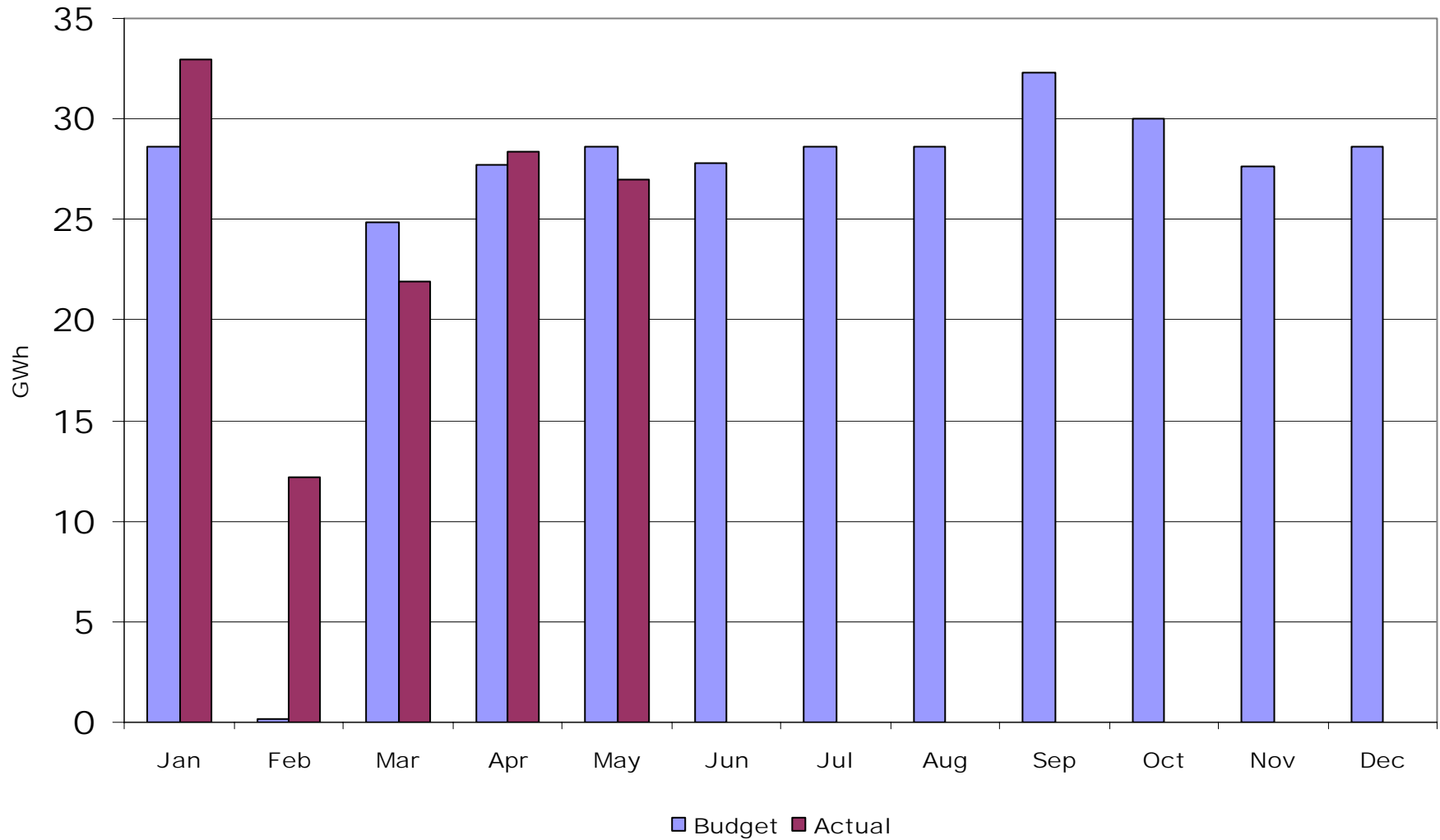
Monthly Energy Requirements



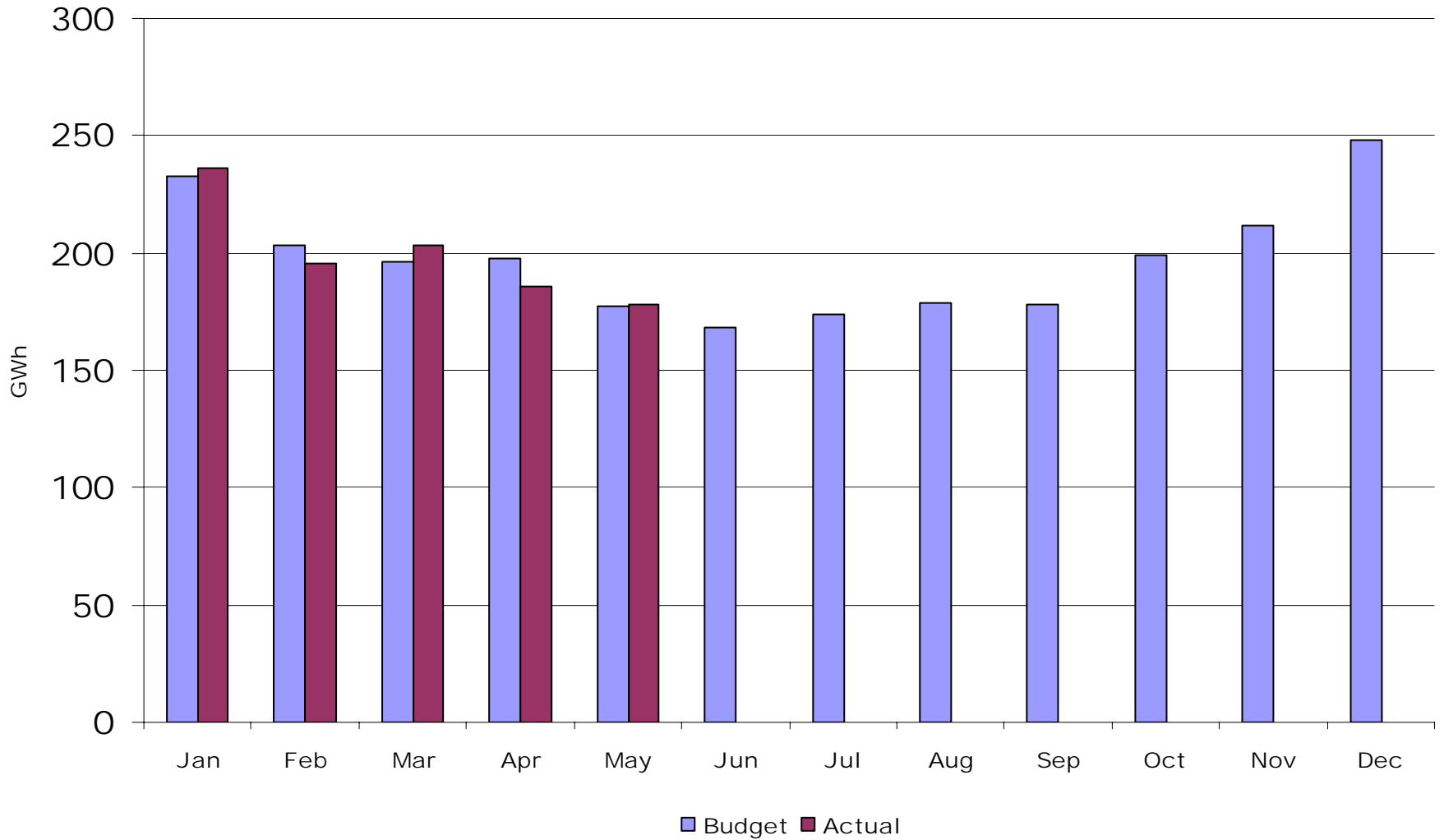
Monthly Hydro Usage



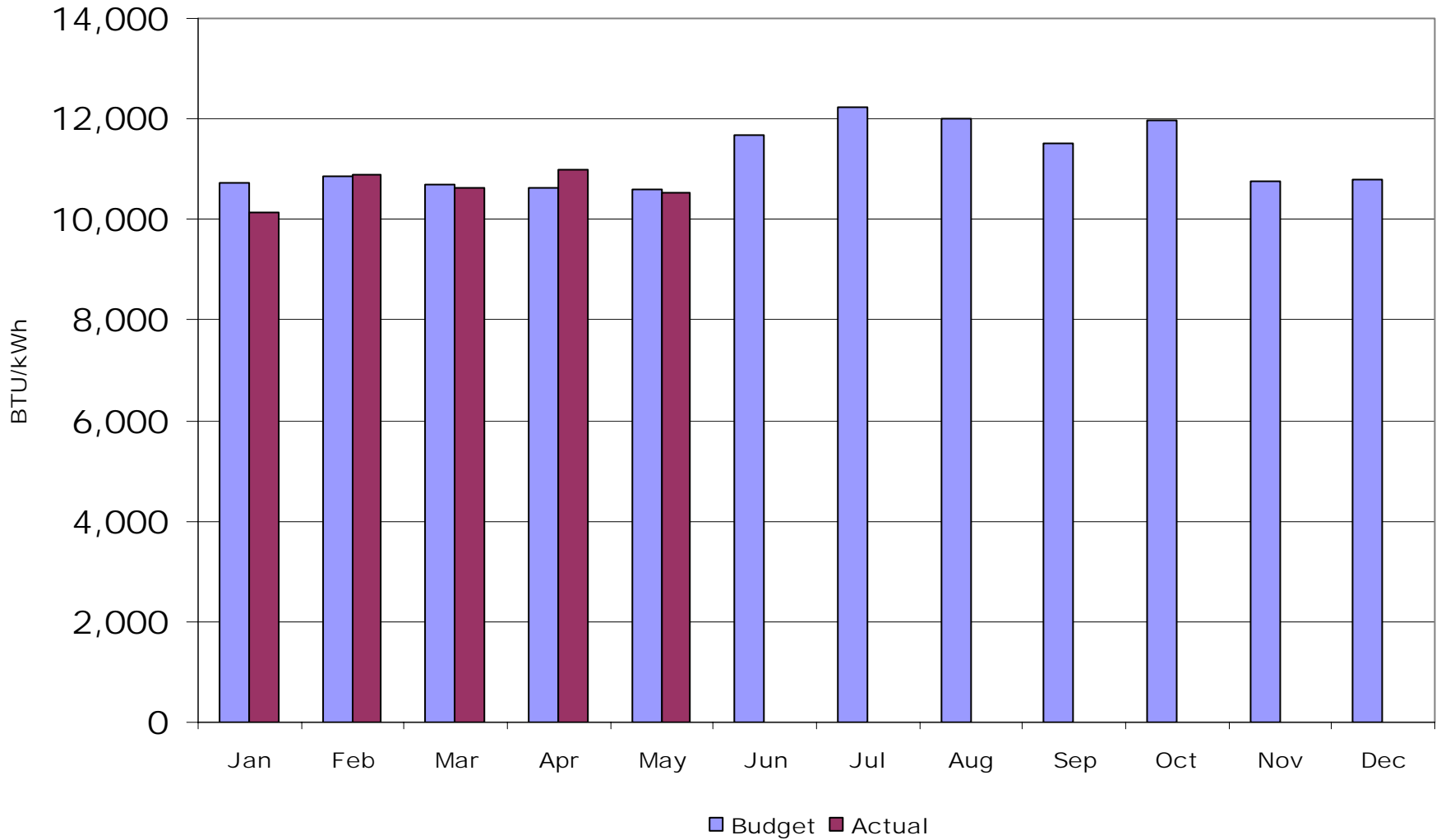
Monthly Purchased Power (excluding Bradley Lake)



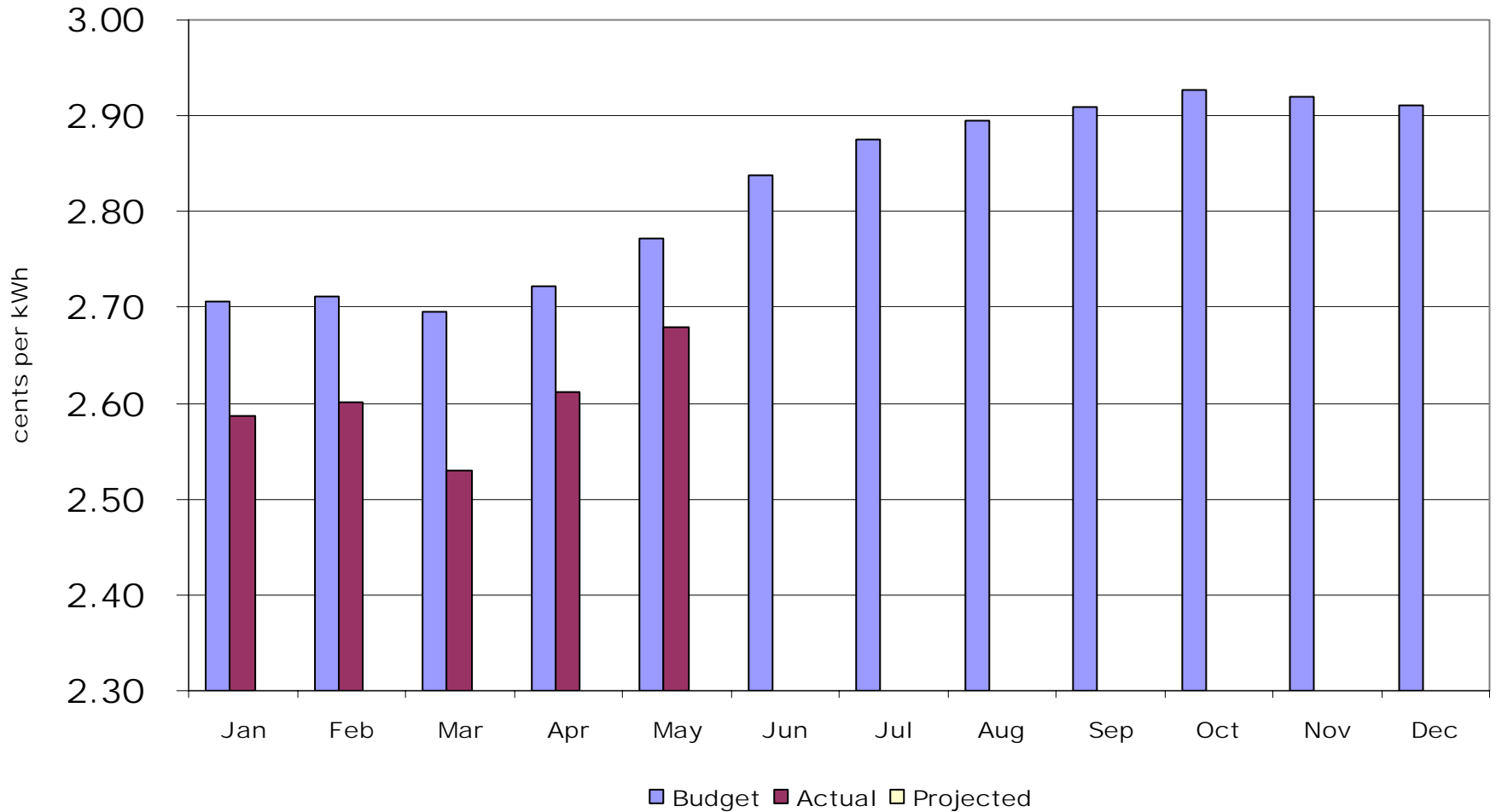
Monthly Thermal Generation



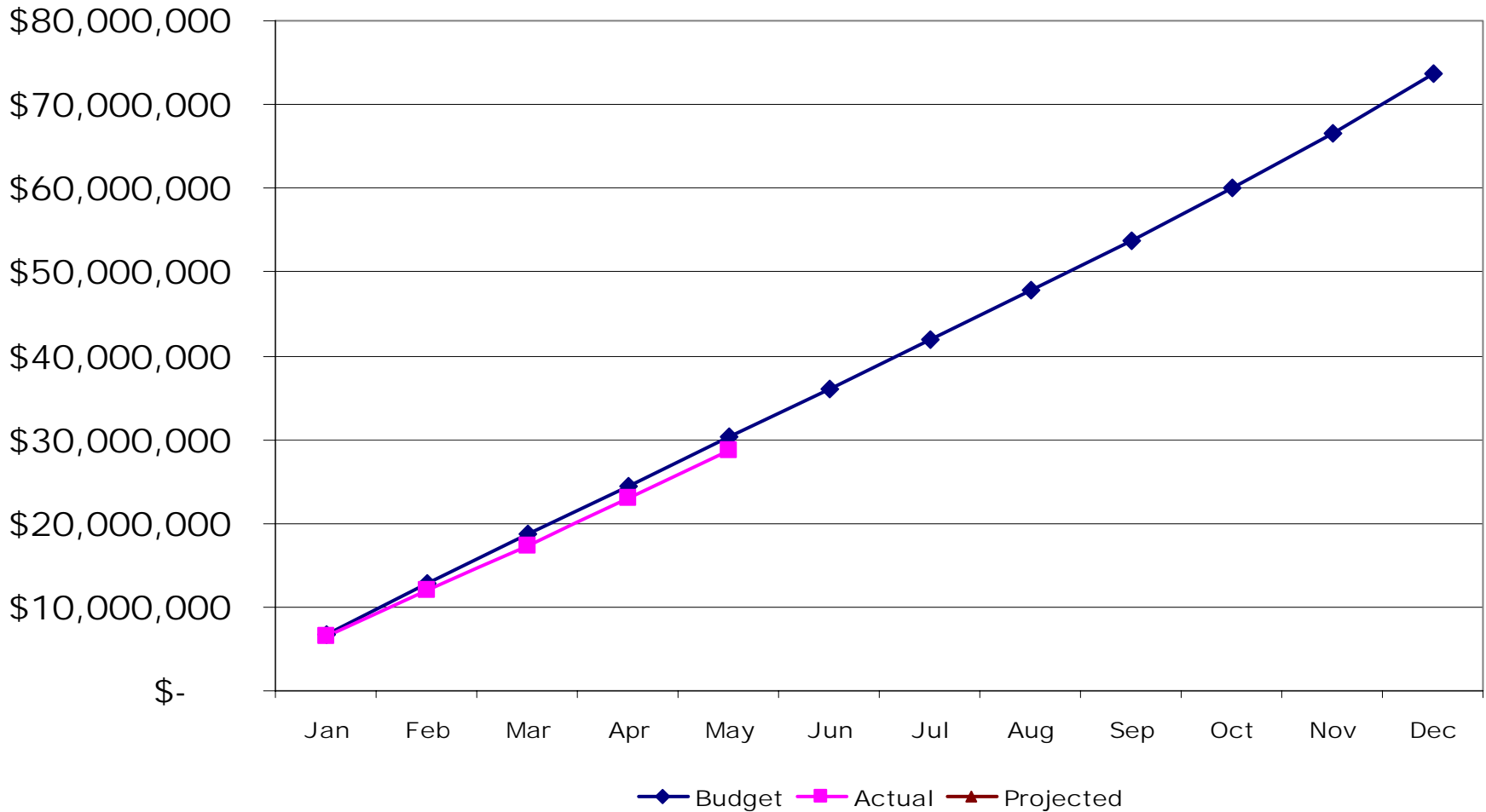
Thermal Unit Heat Rate



Net Fuel & Purchased Power Rate (F&PP minus economy & wheeling)

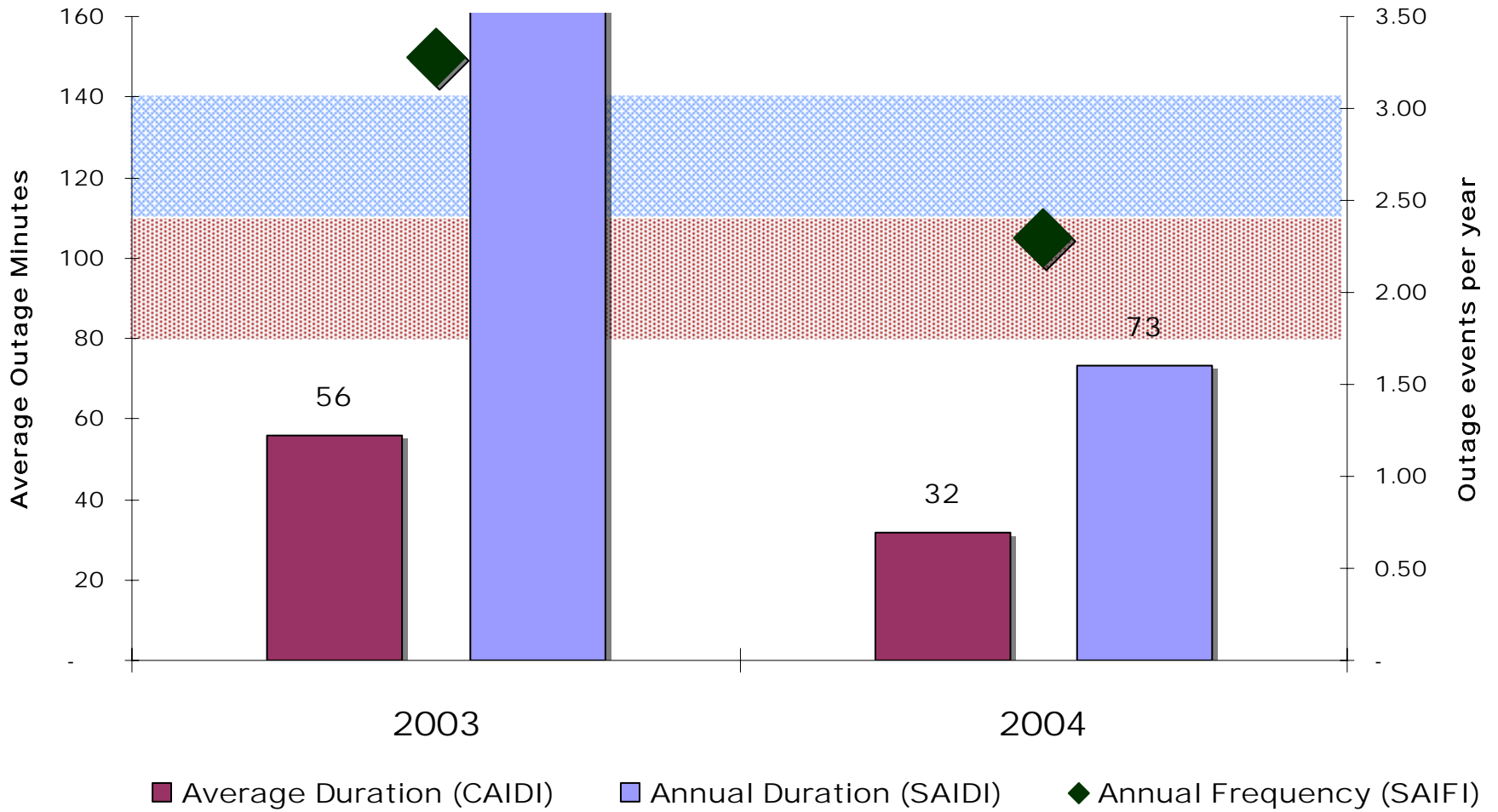


Net Fuel & Purchased Power Cost (F&PP minus economy & wheeling)



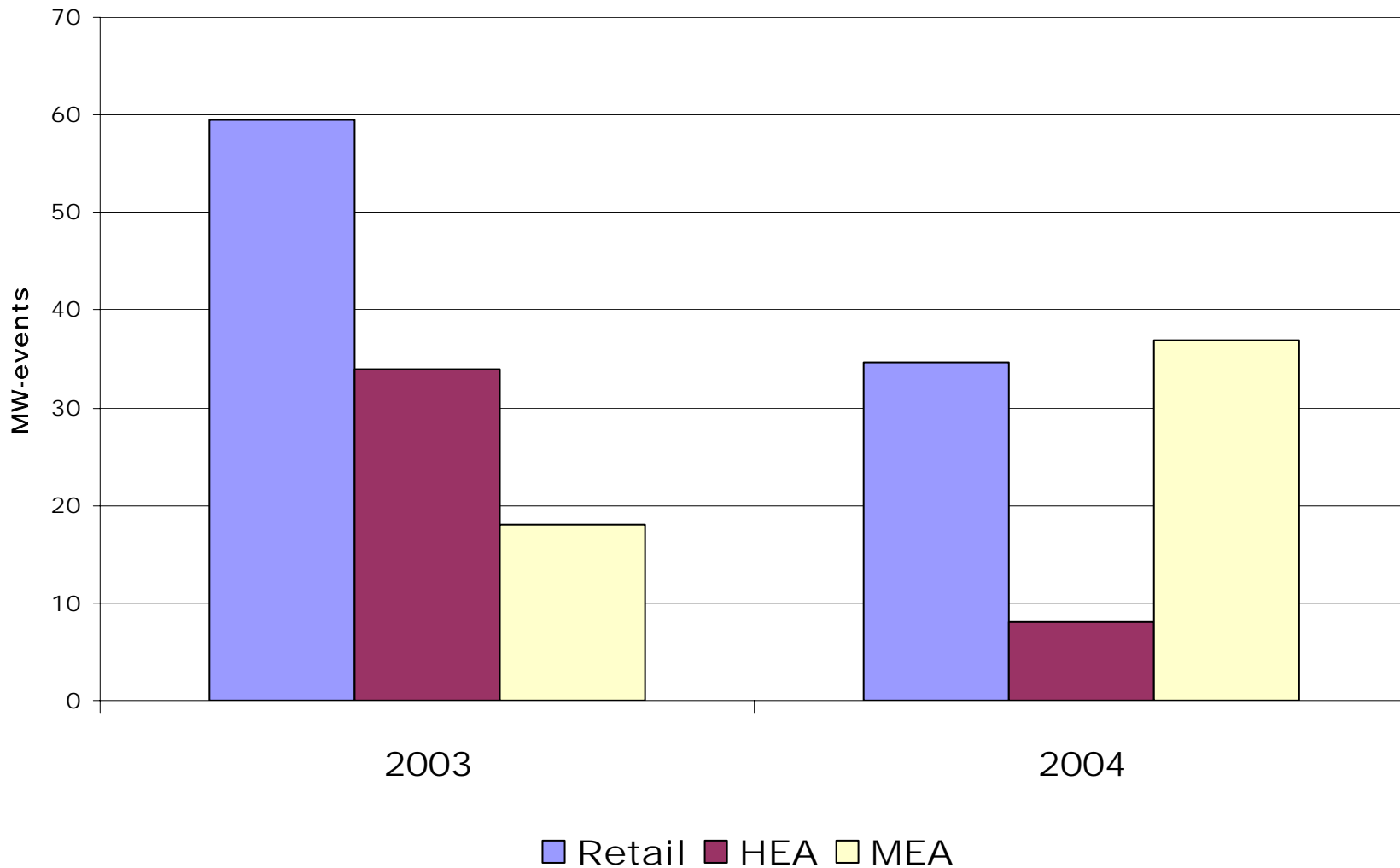
Retail Outage Statistics

183
(running 12 months through May)

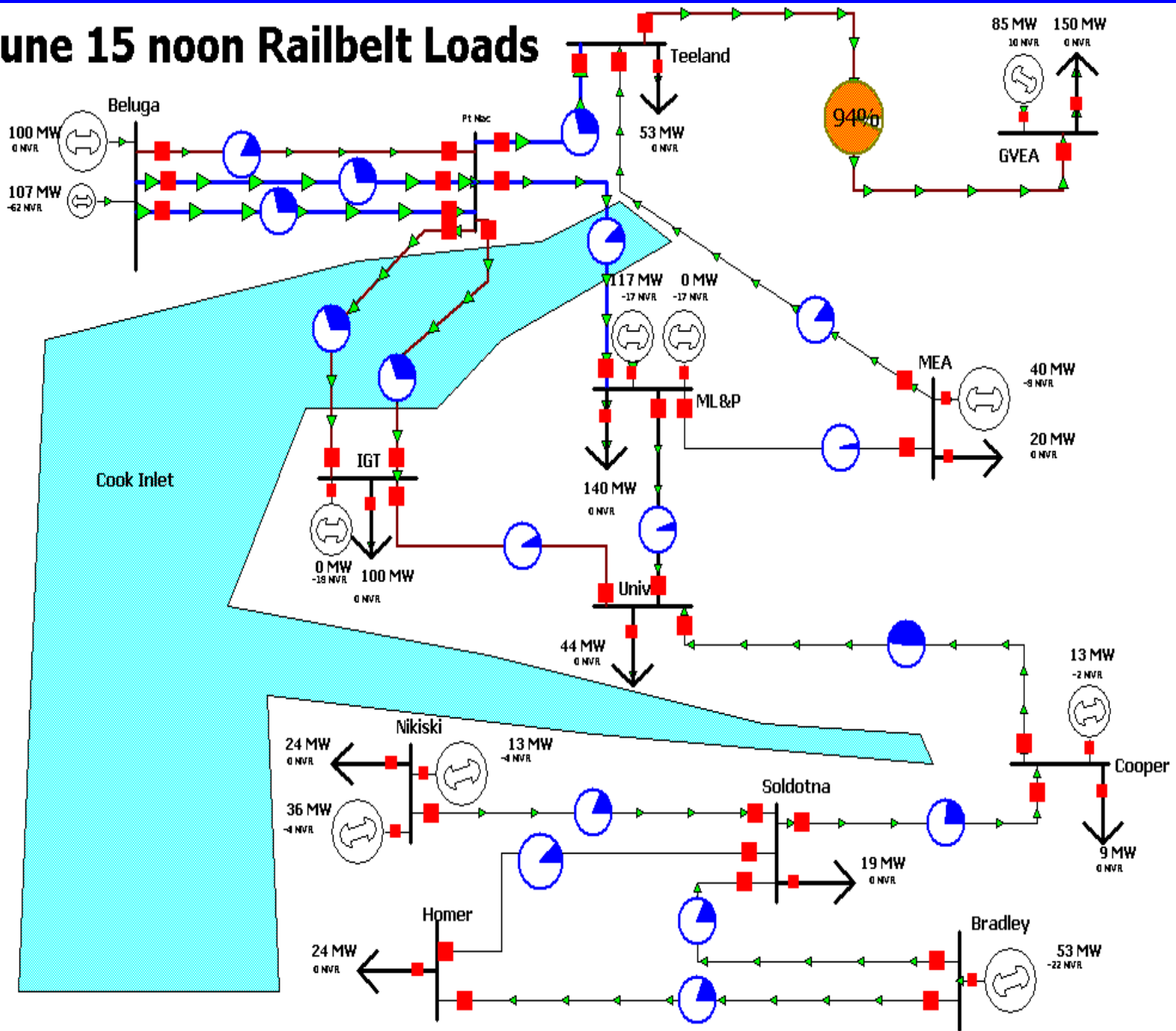


Wholesale Outage Statistics

(running 12 months through May)



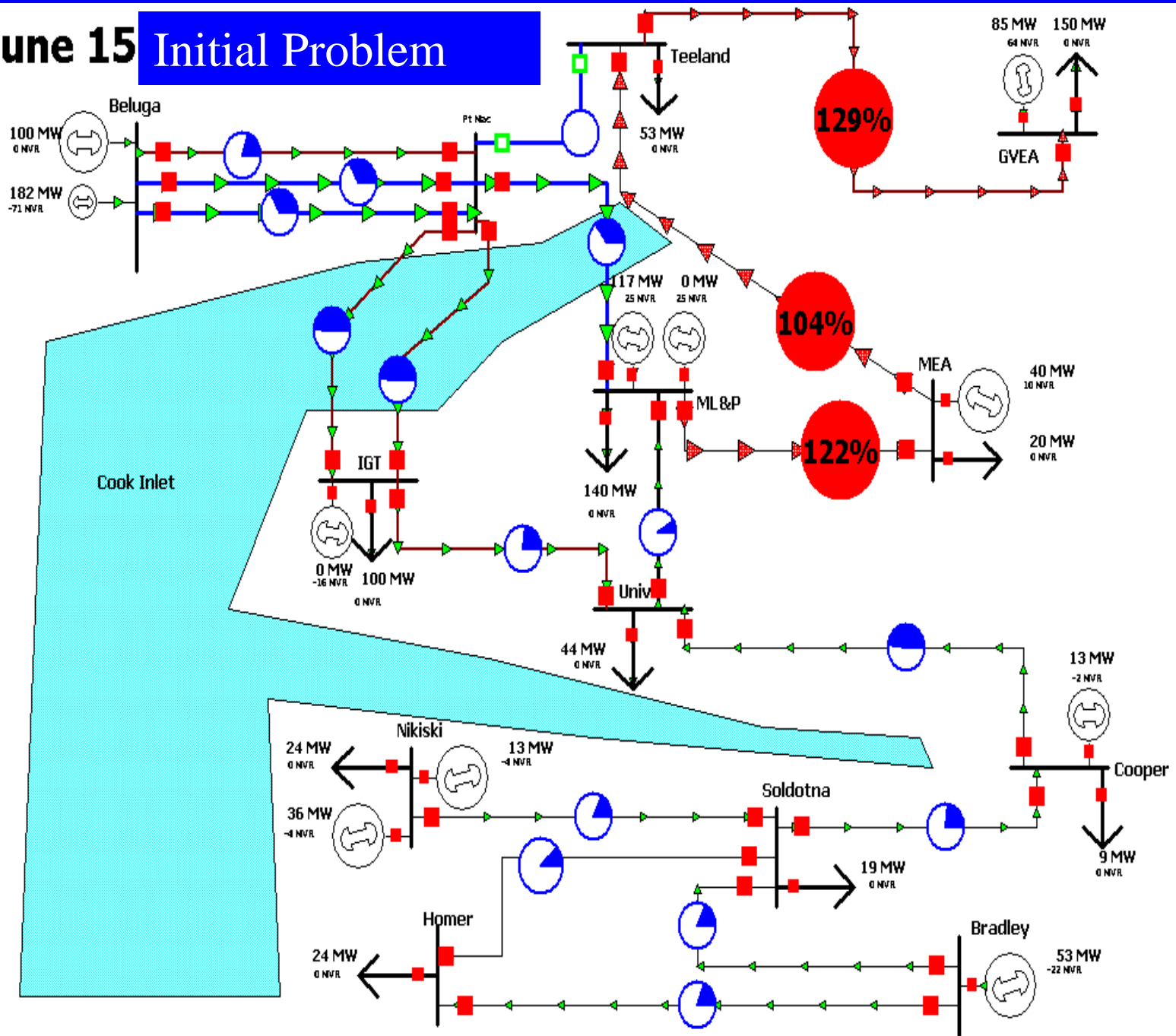
June 15 noon Railbelt Loads



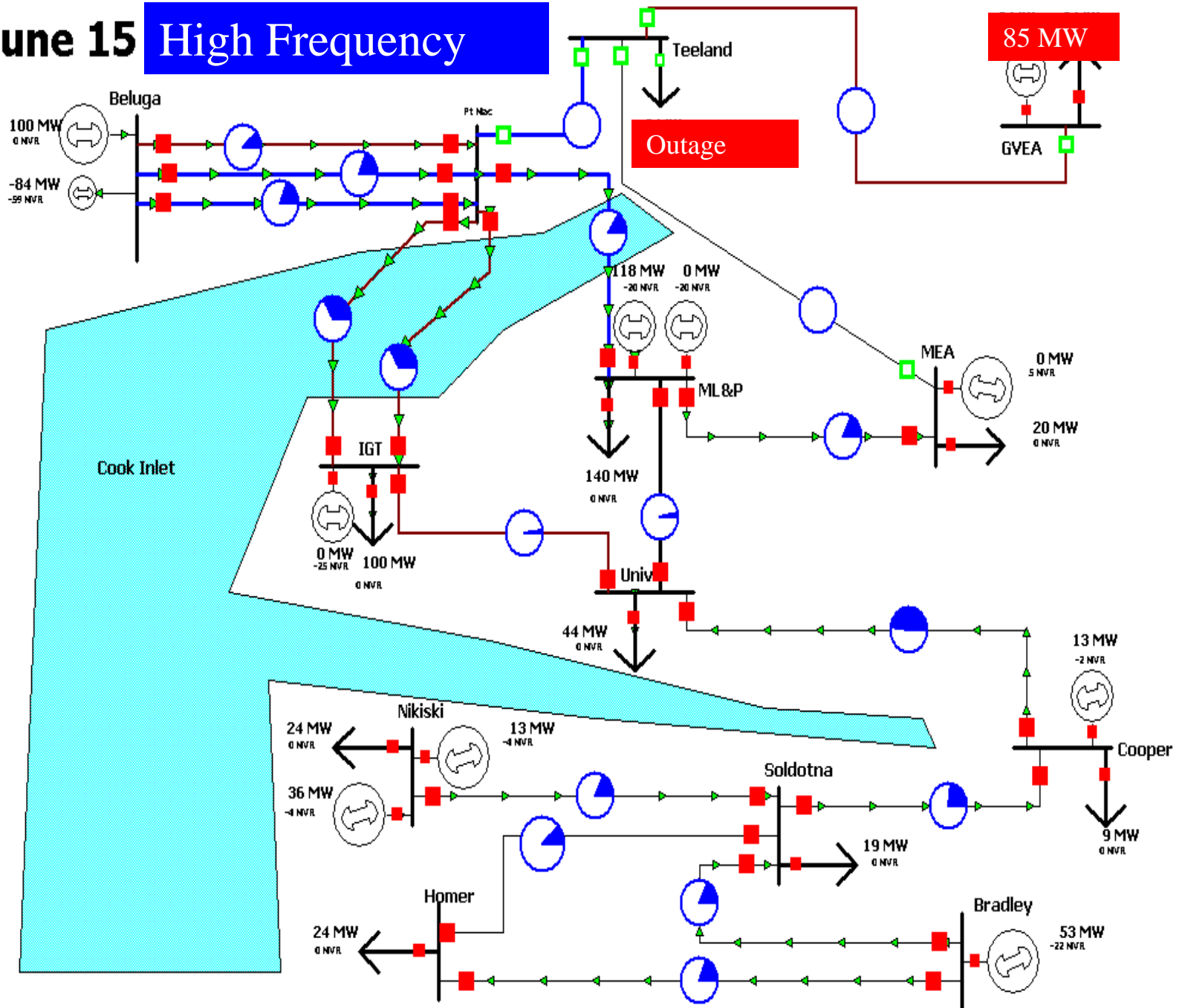
Maintenance in Progress

- GVEA North Pole Generator rewind
- Chugach Beluga 7 rotor replacement
- Bradley Lake 1 annual
- Teeland 230 kV breaker 4610 OOS
 - Internal failure
 - Being replaced causes an open in ring bus
- Relay work at Teeland
 - Vibration caused Breaker 4510 to open

June 15 Initial Problem



June 15 High Frequency



Problems Encountered

- Bradley Lake Governor unable to control
 - Unit tripped when control oil ran out
- Beluga 6 Controls unable to control
 - Burner flamed out tripping unit
 - Beluga 8 tripped on loss of waste heat input
- Dispatcher picked up too much load

June 15 Wide Outages

