



Second Quarter 2010 Safety Report

**Dave Smith, Senior Vice President, Administration
&**

Ken Thomas, CSP, CLCP, Safety Manager

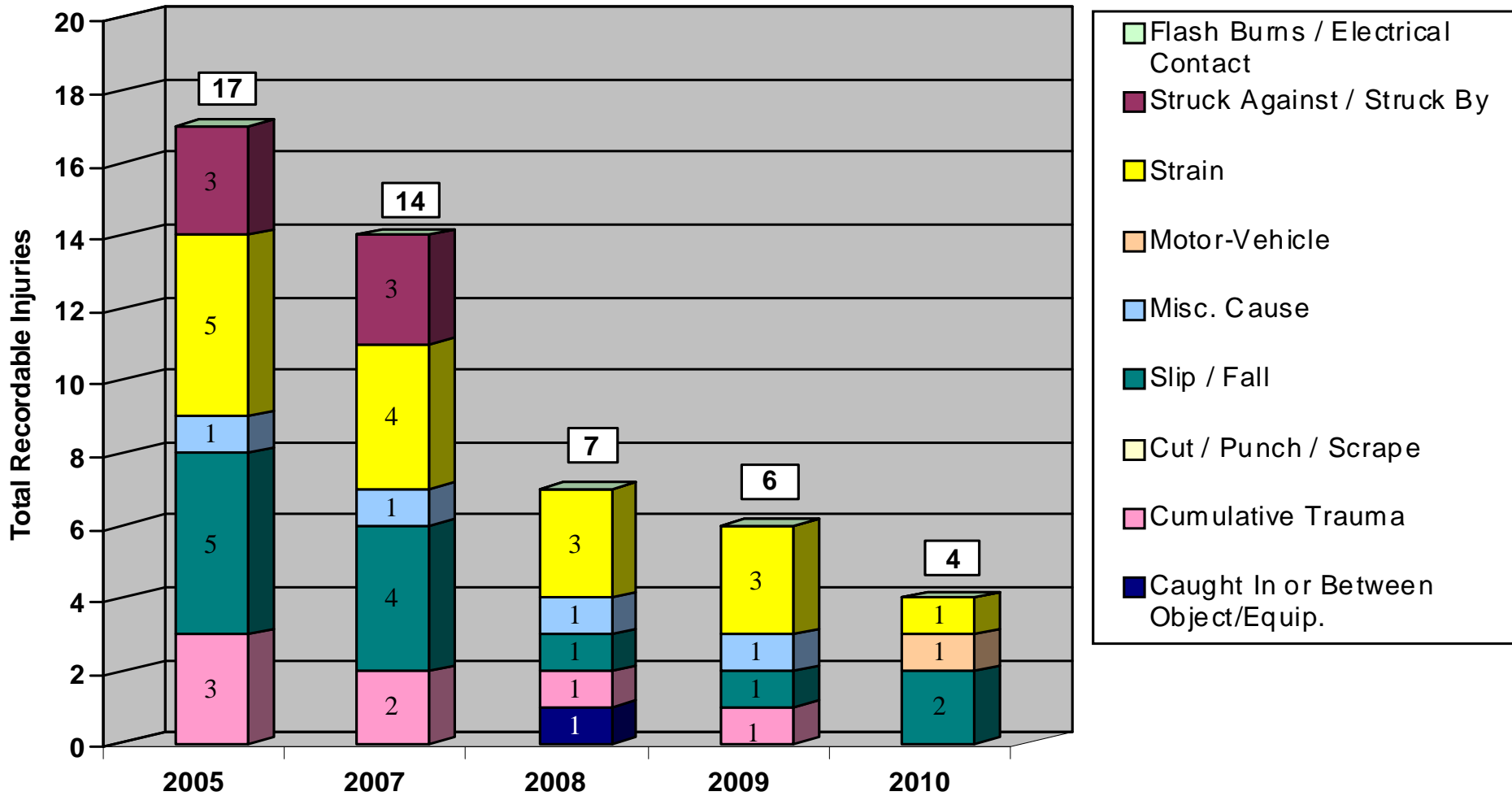
July 28, 2010



A First at Chugach!!

- Chugach went from December 23 to June 16th without a lost time injury; a first time record.

Causes of Recordable Injuries Year-to-Date Through June In Each Year

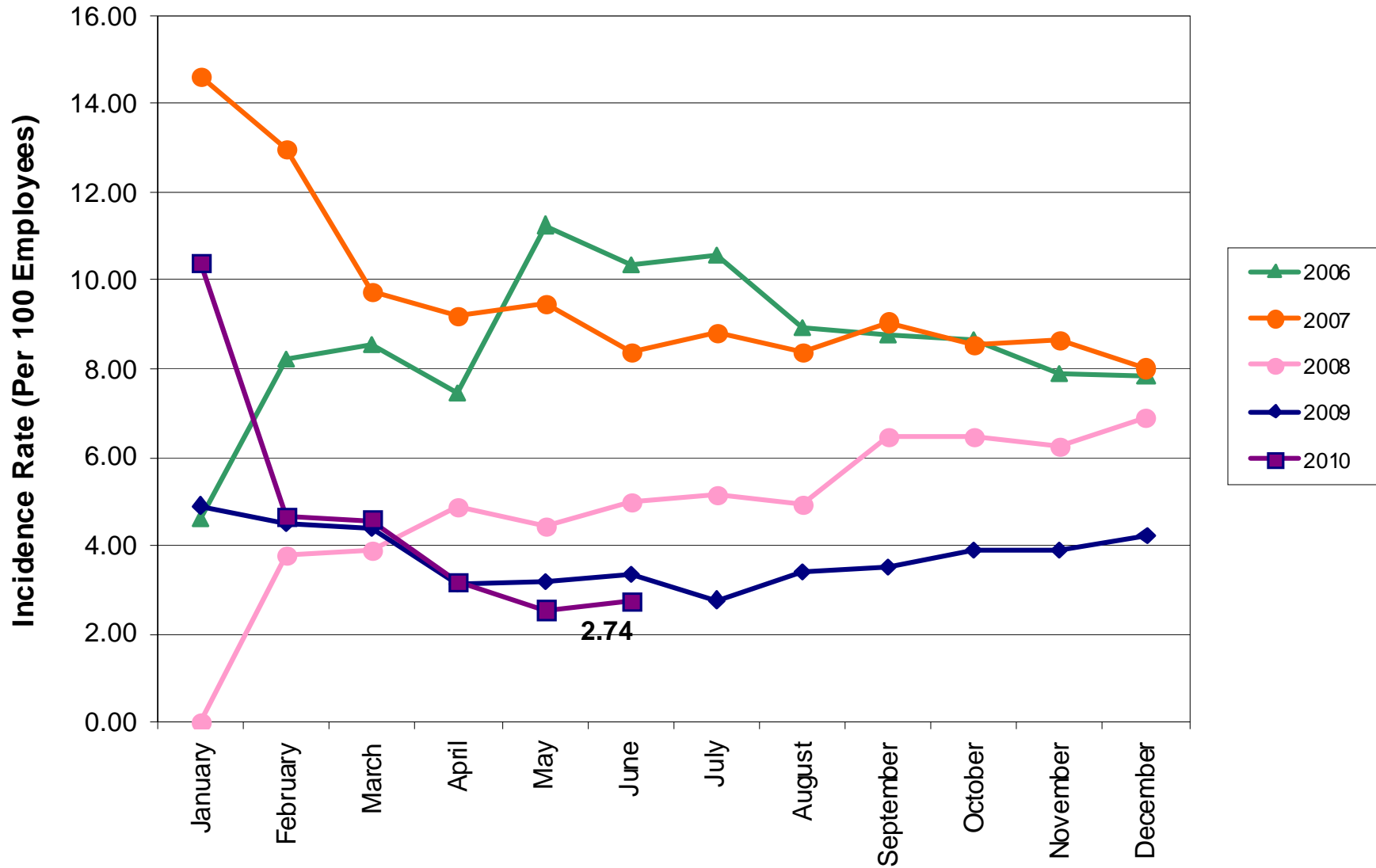


April to June Recordable Incidents

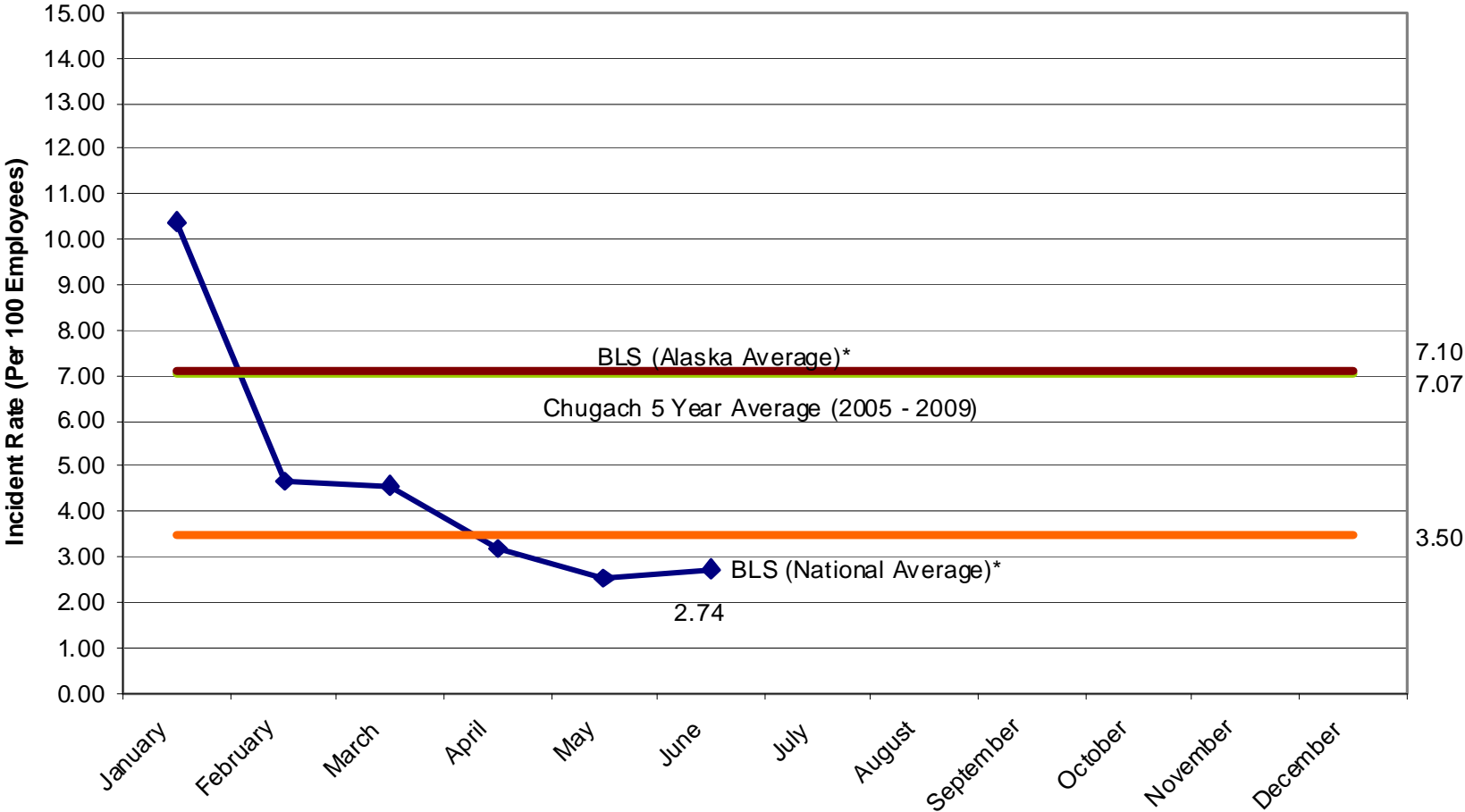
■ Fall:

- On June 16th a Substation Lineman fell from a five foot ladder trying to get into a connex loaded on a trailer. (Power Delivery)

OSHA Recordable Incidence Rate June 2010

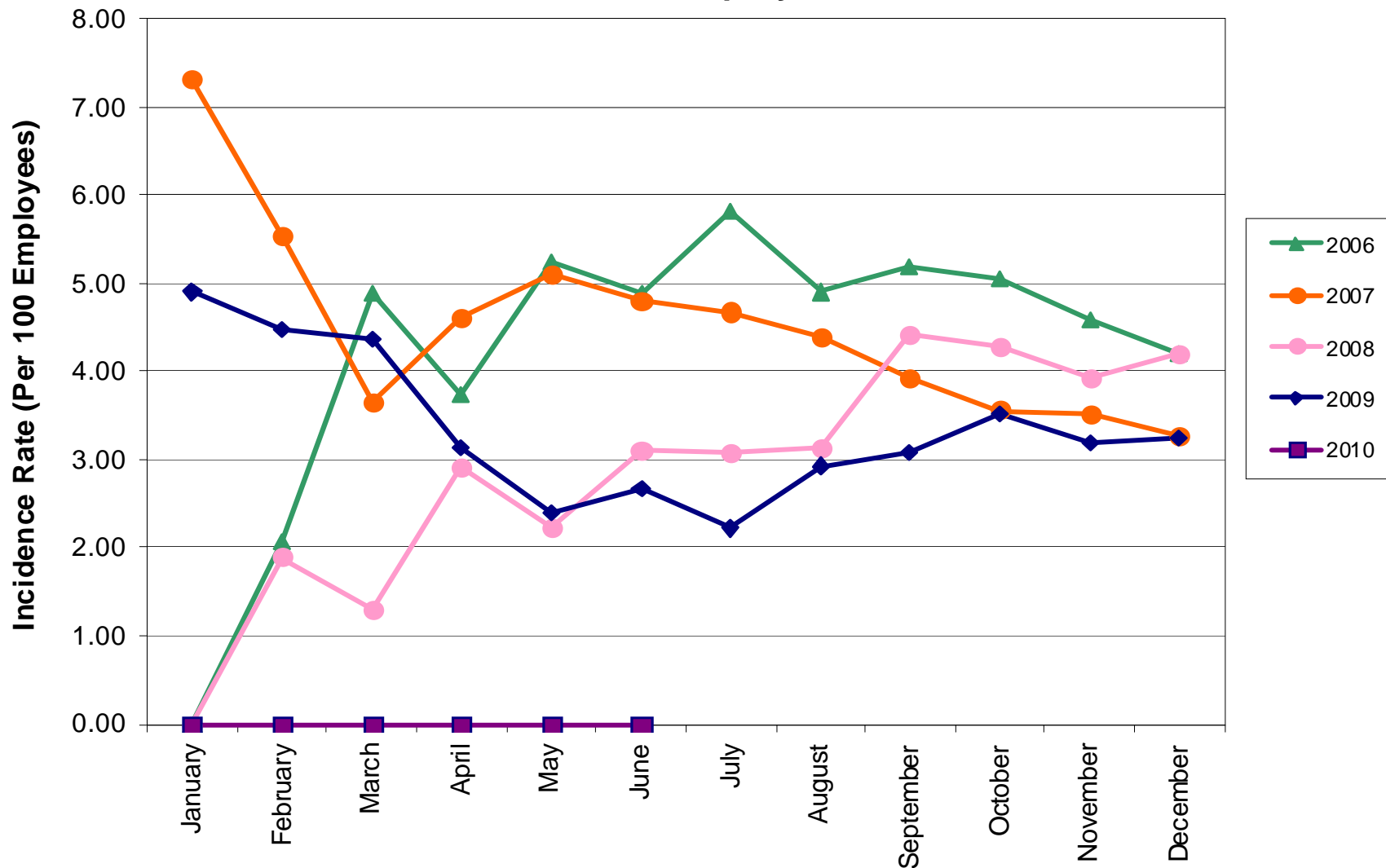


Recordable Incidence Significance of Change

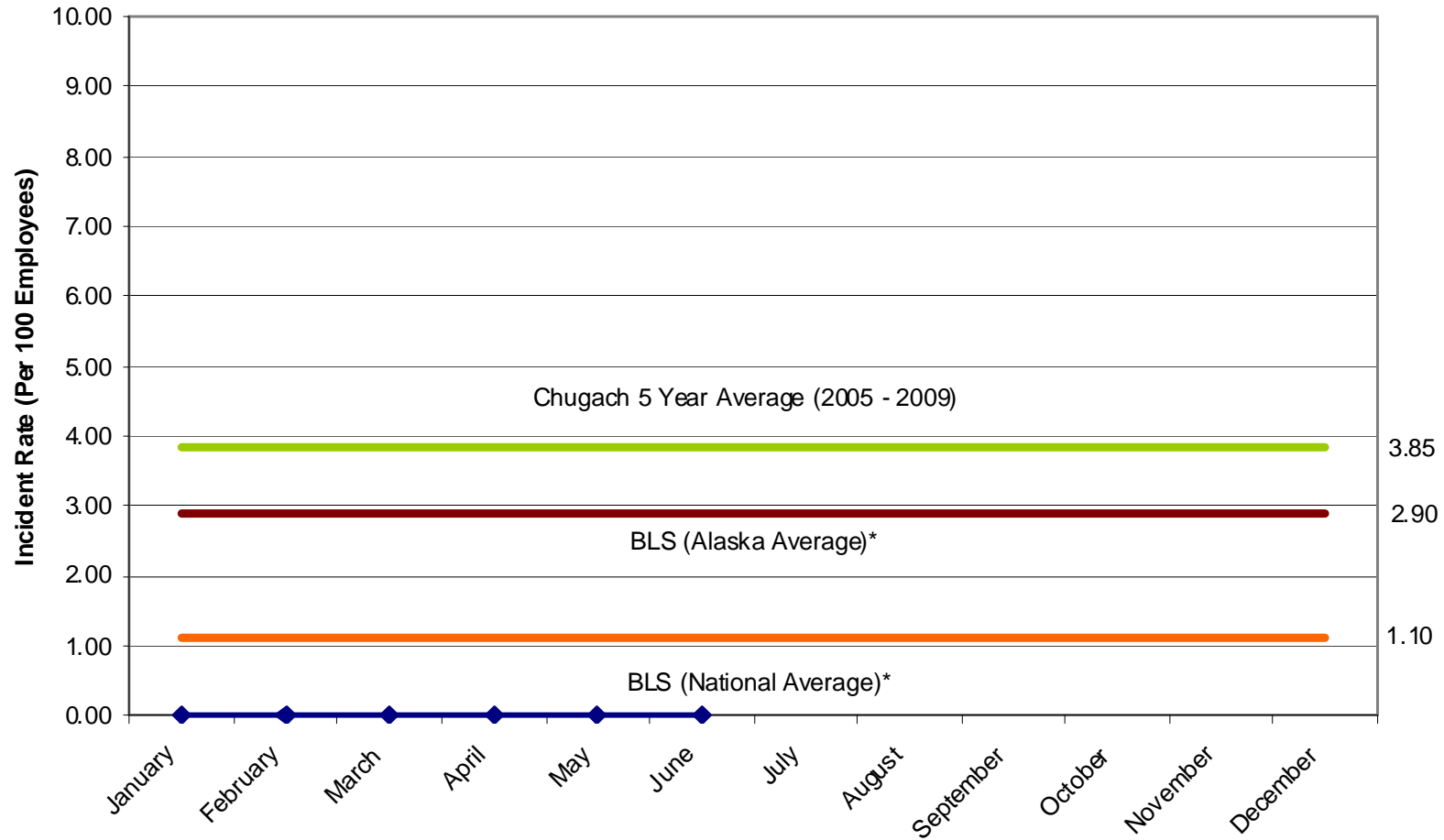


* Based on 2009 data reported to the Bureau of Labor Statistics (BLS) under NAICS Code 2211

Lost Time Recordable Incidence Rate Per 100 Employees

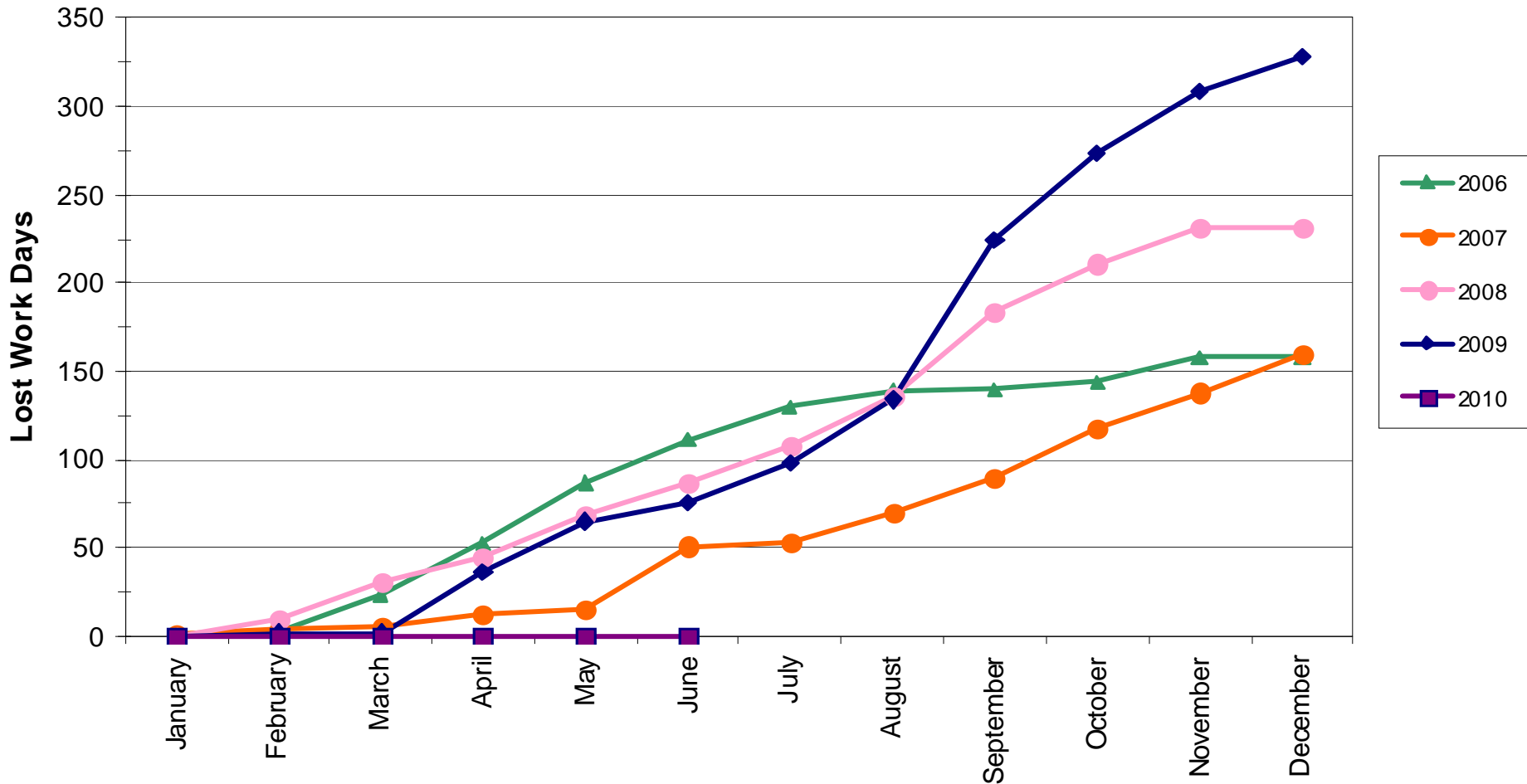


Lost Time Recordable Incidence Significance of Change



* Based on 2009 data reported to the Bureau of Labor Statistics (BLS) under NAICS Code 2211

Cumulative Number of Lost Work Days* June 2010



* Reflects only lost work days for injuries incurred during indicated year

Status of Safety Audit Action plan

- Chugach achieved NRECA safety accreditation based on in-depth inspection of facilities and a review of performance
- Vacancy for Safety Specialist position in final interview stage
- 2nd Quarter Executive Review of incidents completed
- Safety Policy Manual update

Work with medical provider and employee for scheduling worker medical evaluations and respiratory fit tests. Responsible for distributing and implementing this procedure within Chugach Electric to affected parties.

1.25.0.1 Respiratory Protection Program Requirements

1.25.0.1.1 General Information

1. Respirators protect workers from inhaling hazardous airborne chemicals. These chemicals can be in the form of gases, vapors, mists or dust. Because Chugach is aware that hazards of this type exist at their facilities, they have designed their program to ensure the respiratory safety of their workers.
2. Contractors using respirators at controlled sites shall have their own Respiratory Protection Program - meeting both Chugach policy and OSHA regulations and supply respirators to their workers.

1.25.0.1.2 Hazard Assessment

From Chugach's first hazard assessment, which established a "base-line" of workplace hazards associated with each work group, and formulated the PPE matrix identifying PPE requirements where other hazard controls were unavailable, Chugach continues to assess and update their database of information as technology changes or new hazards are introduced. The Safety Manager or their designee:

1. Conducts hazard assessments at Chugach locations: Anchorage: Bldg A, B, C, E, F, G; Beluga; IGT; Bernice Lake; Cooper Lake; Eklutna, substations and other facilities controlled by Chugach.

1. Half-Face Air-Purifying Respirator



- These respirators are sometimes called “half-face” or “half-mask” respirators since they cover just the nose and mouth.
- They have removable cartridges that filter out either dust, chemicals or both.
 - Selecting the correct cartridges is essential since they are designed for particular types of chemicals or dust such as solvents, ammonia, chlorine, acids, and other chemicals. (Contact your Supervisor or the Safety Manager for Chugach’s ‘Hazard Assessment & PPE Matrix’ for the type of cartridges used for particular hazards in particular jobs).
 - Cartridges are typically removable and sometimes interchangeable.
 - Cartridges must be changed out or replaced periodically, especially for chemicals, since they can absorb only so much contaminant before breakthrough occurs.



Questions?