



2008 Safety Report

Second Quarter

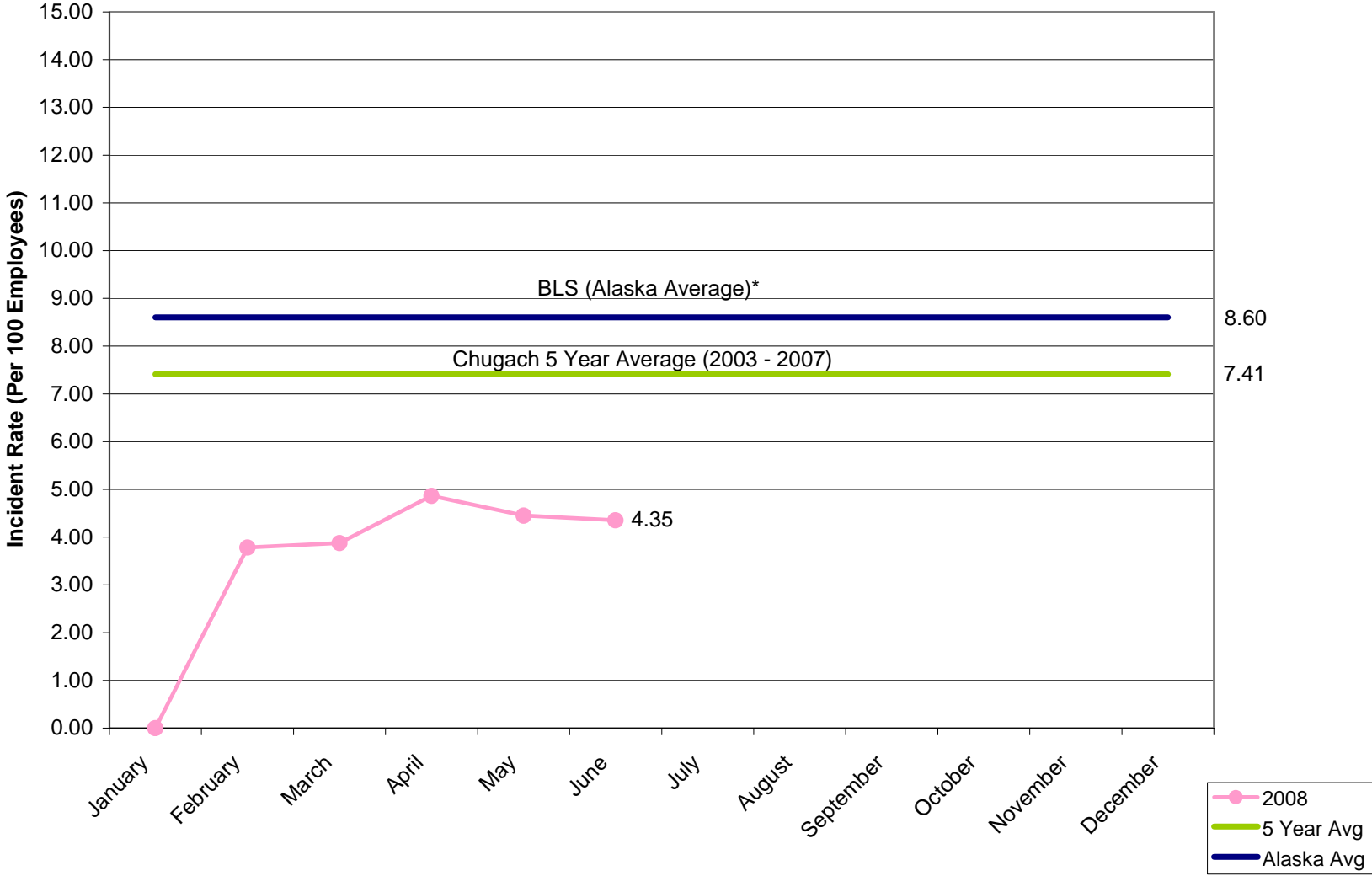
Ken Thomas, CSP, CLCP

Manager, Safety & Industrial Hygiene

July 2008

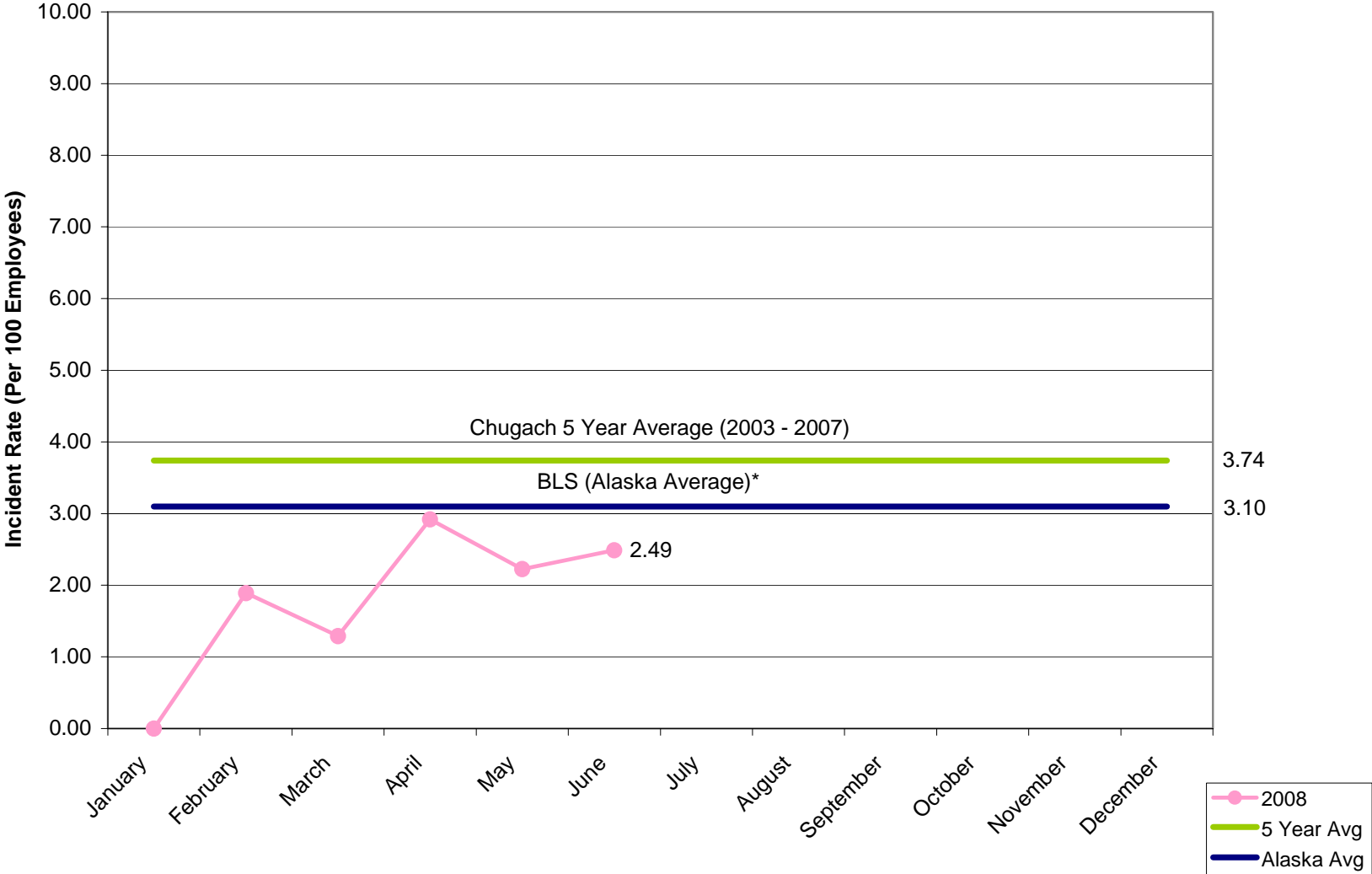


Recordable Incidence Significance of Change



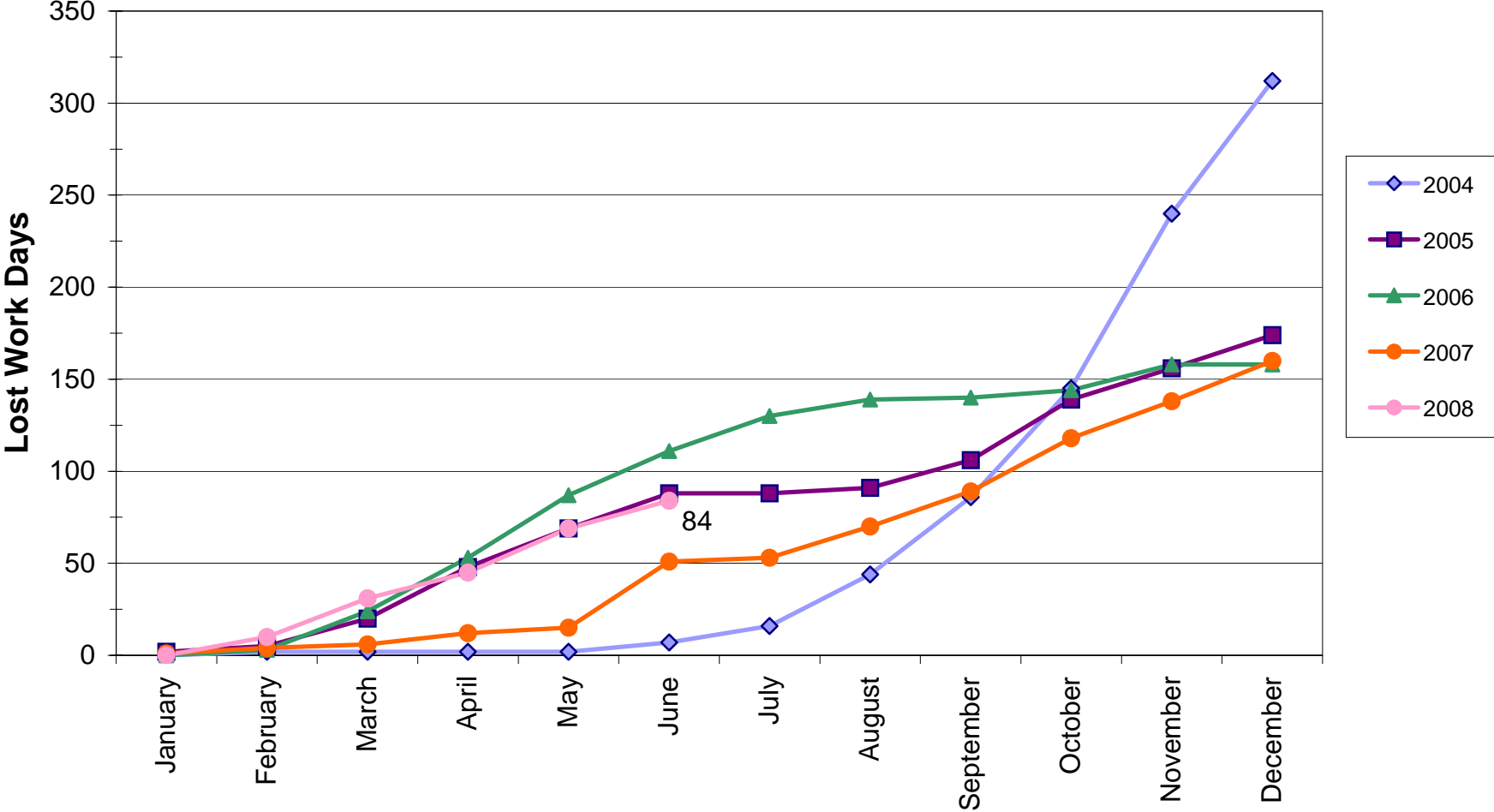
* Based on 2006 data reported to the Bureau of Labor Statistics (BLS) under NAICS Code 2211

Lost Time Recordable Incidence Significance of Change



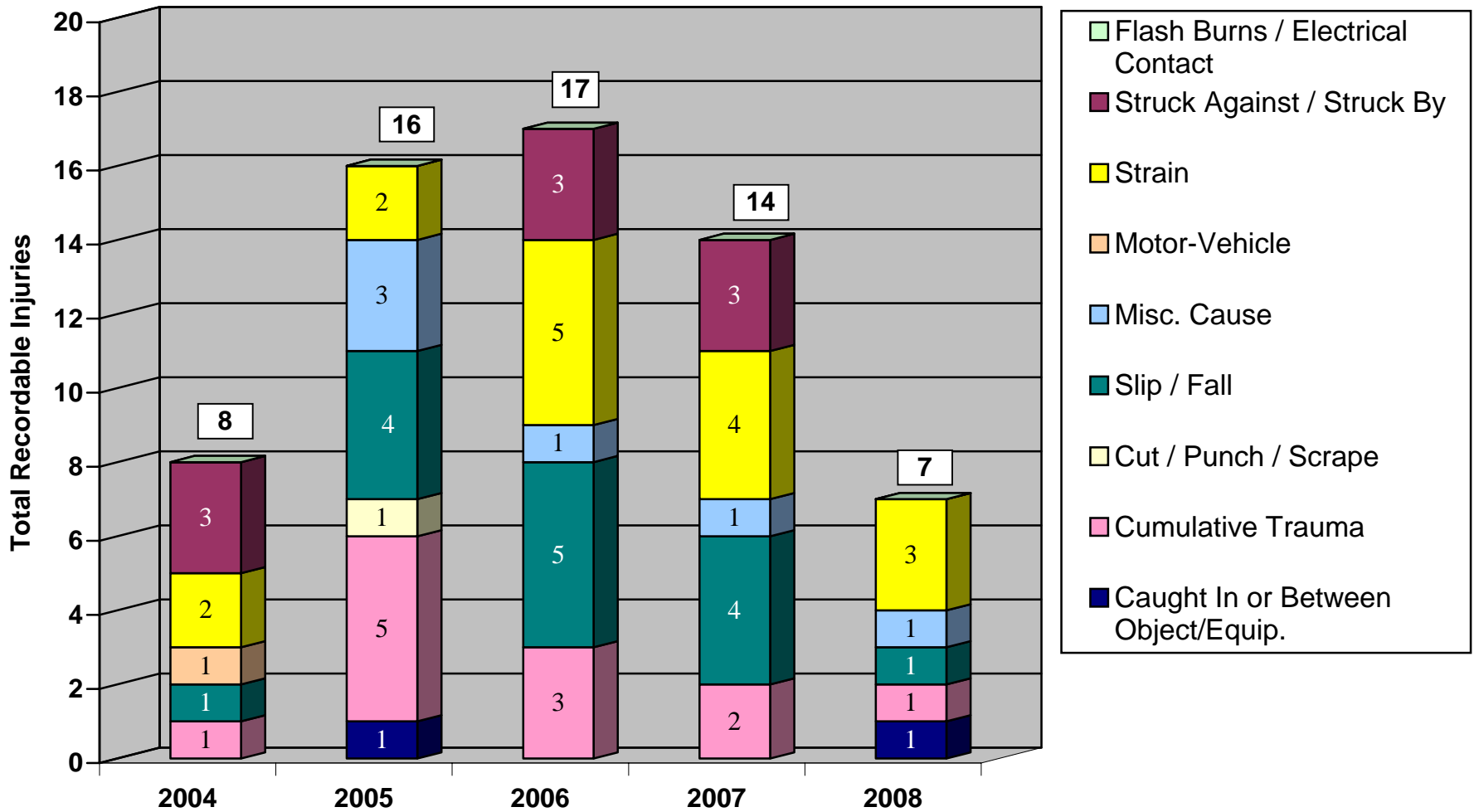
* Based on 2006 data reported to the Bureau of Labor Statistics (BLS) under NAICS Code 2211

Cumulative Number of Lost Work Days*

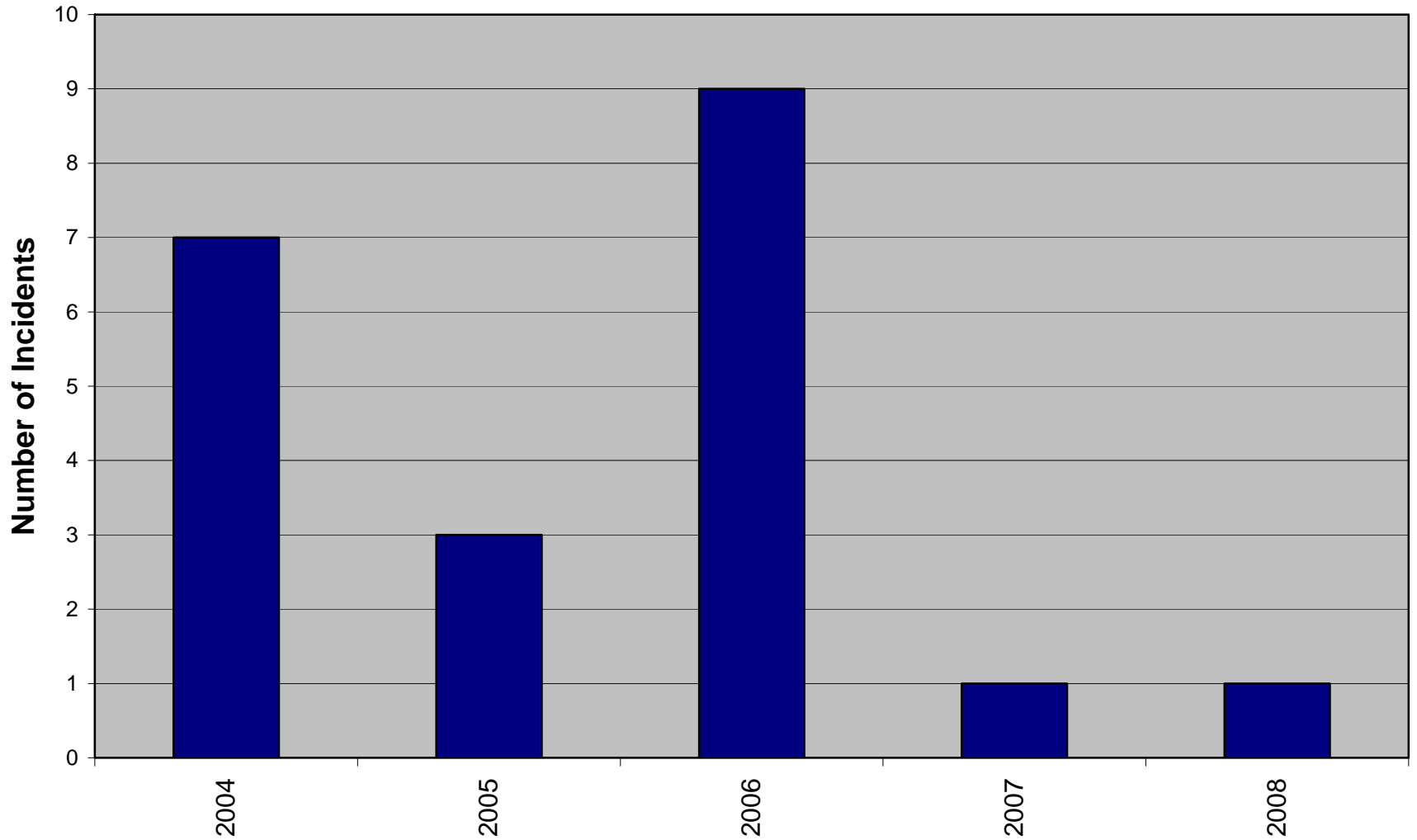


* Reflects only lost work days for injuries incurred during indicated year

Causes of Recordable Injuries Year-to-Date Through June In Each Year



Recordable Vehicle Incidents Through June in Each Year



Worker's Compensation

- Total Number of Claims Through June: 8
 - Power Delivery: 4
 - Power Supply: 4

- Total Paid Through June 2008: **\$187,333**
 - 2008 Injuries: **\$47,030**
 - 2004-2007 Injuries: **\$140,303**



Questions?

