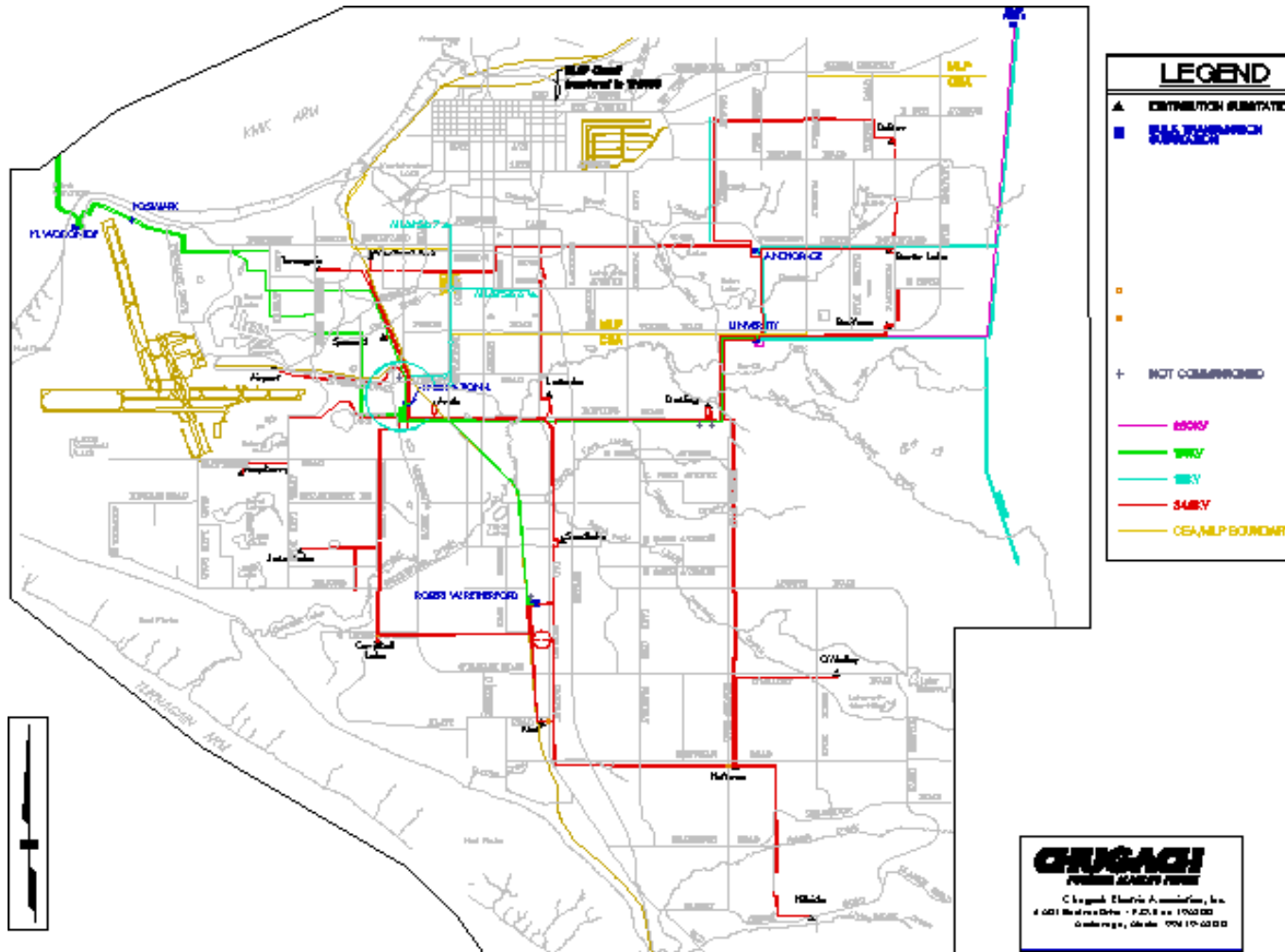
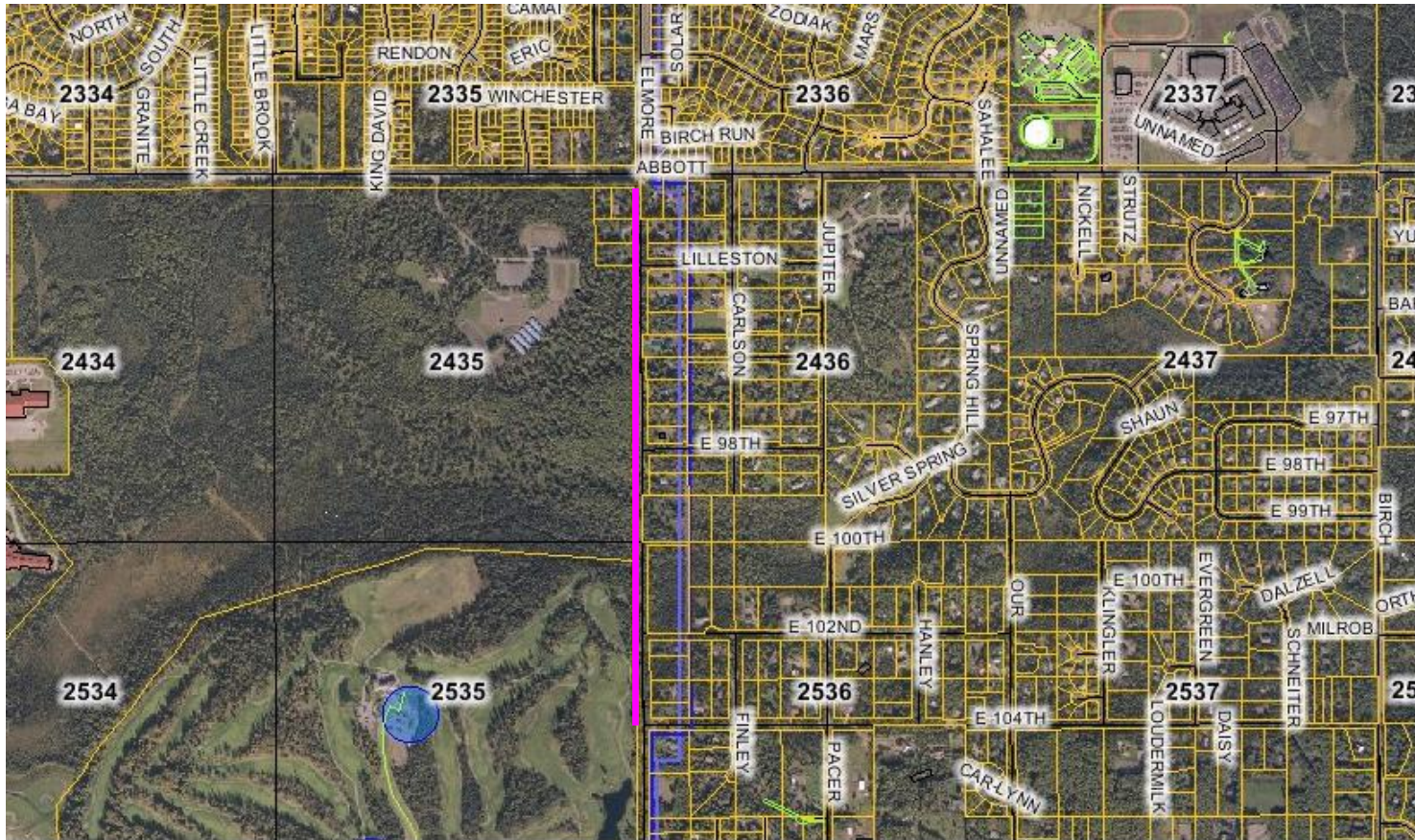


# 138kV Transmission Line Elmore Road

August 2008

# Chugach Anchorage Area Transmission Lines





The Elmore - 104th Ave. to Abbott Rd. 138 kV O.H. project will install an overhead section of the Retherford to University substation 138 kV tie. This project will install approximately one mile of overhead conductor which will maintain the north / south alignment of the 138 kV transmissin line along Elmore Rd. No traffic impact is expected.



Existing 138kV line  
along Elmore Road

Adjacent to the  
Project

# Mid Hillside Community Council borders on Abbott Loop Community Council (West)

Meetings attended:

Mid Hillside

October 19, 2006

May 17, 2007

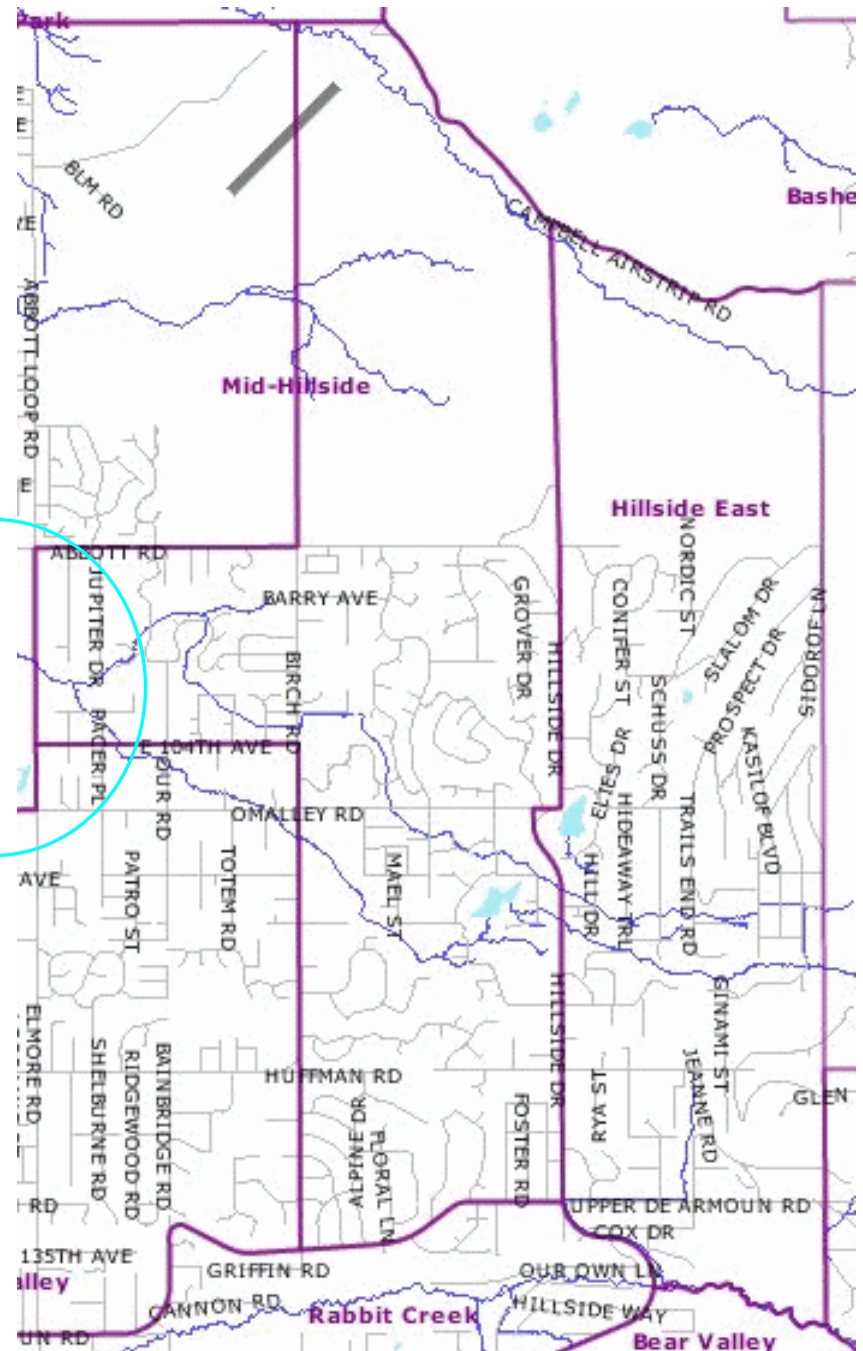
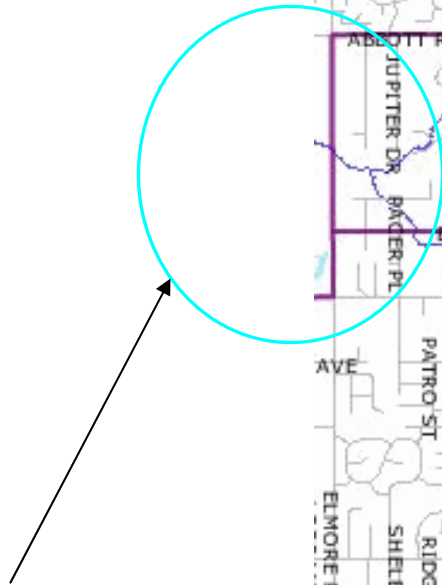
March 20, 2008

Abbott Loop

May 31, 2007

March 27, 2008

Location of new  
138kV Line



# 138kV Transmission Line Elmore Road Schedule

- Project approved for \$1,381,100
  - Clearing
  - Foundations
  - Structures
  - Conductor
  - Completion
- 3/19/2008
  - 8/15/2008
  - 9/12/2008
  - 9/27/2008
  - 10/14/2008
  - 10/20/2008