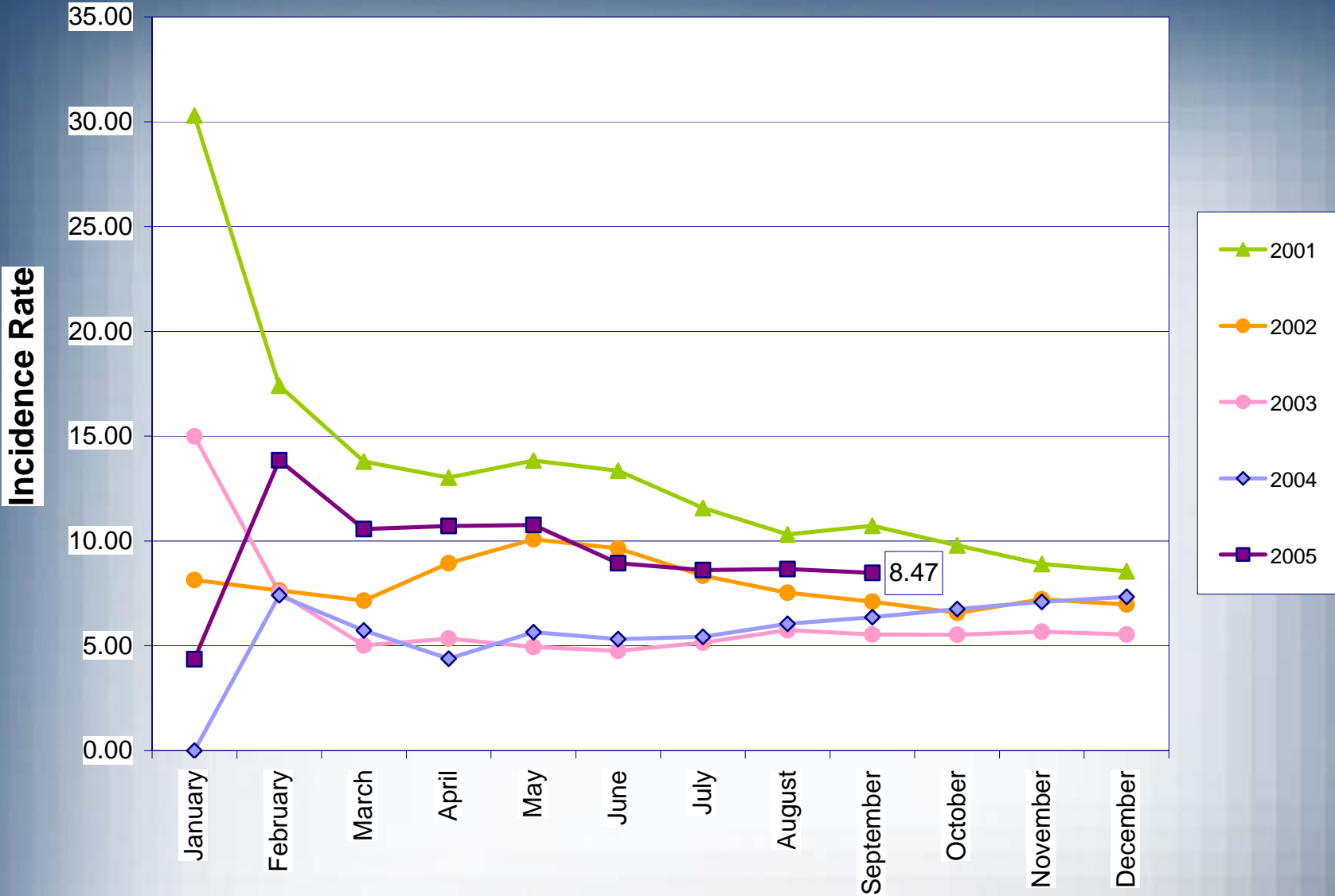


2005 SAFETY REPORT

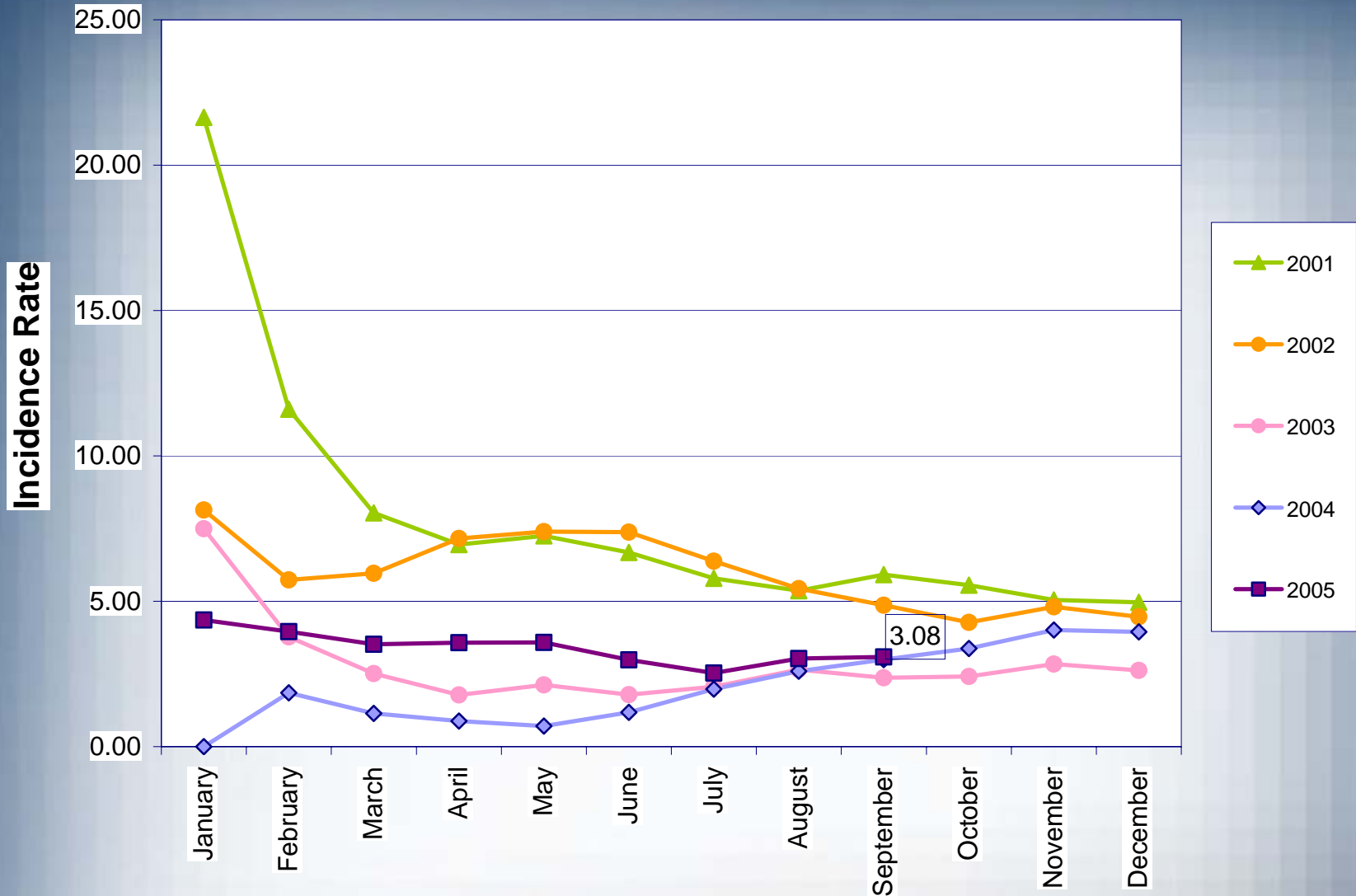
Ken Thomas, Safety Manager, CSP, CLCP

October 19, 2005

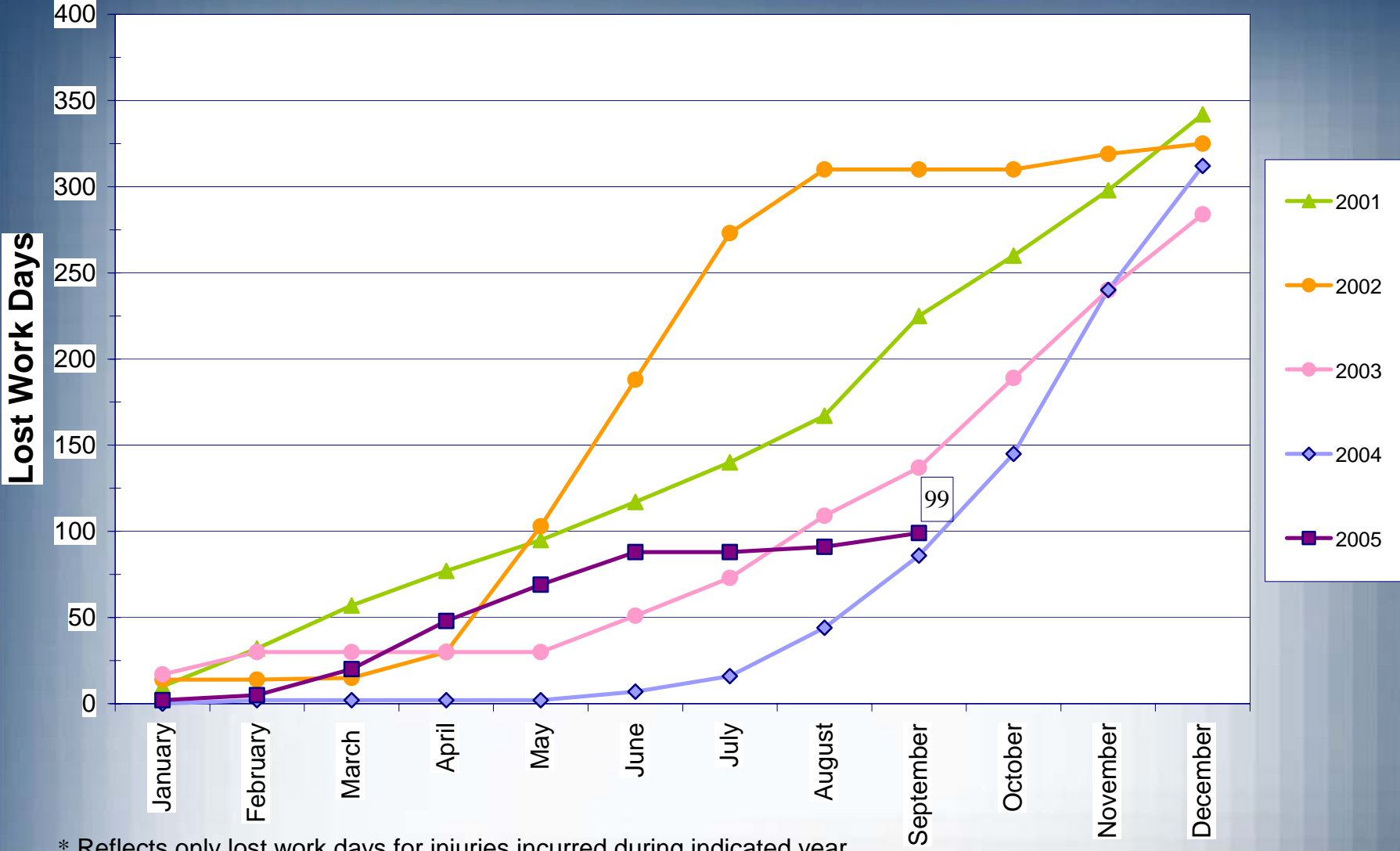
OSHA Recordable Incidence Rate Per 100 Employees



Lost Time Recordable Incidence Rate Per 100 Employees

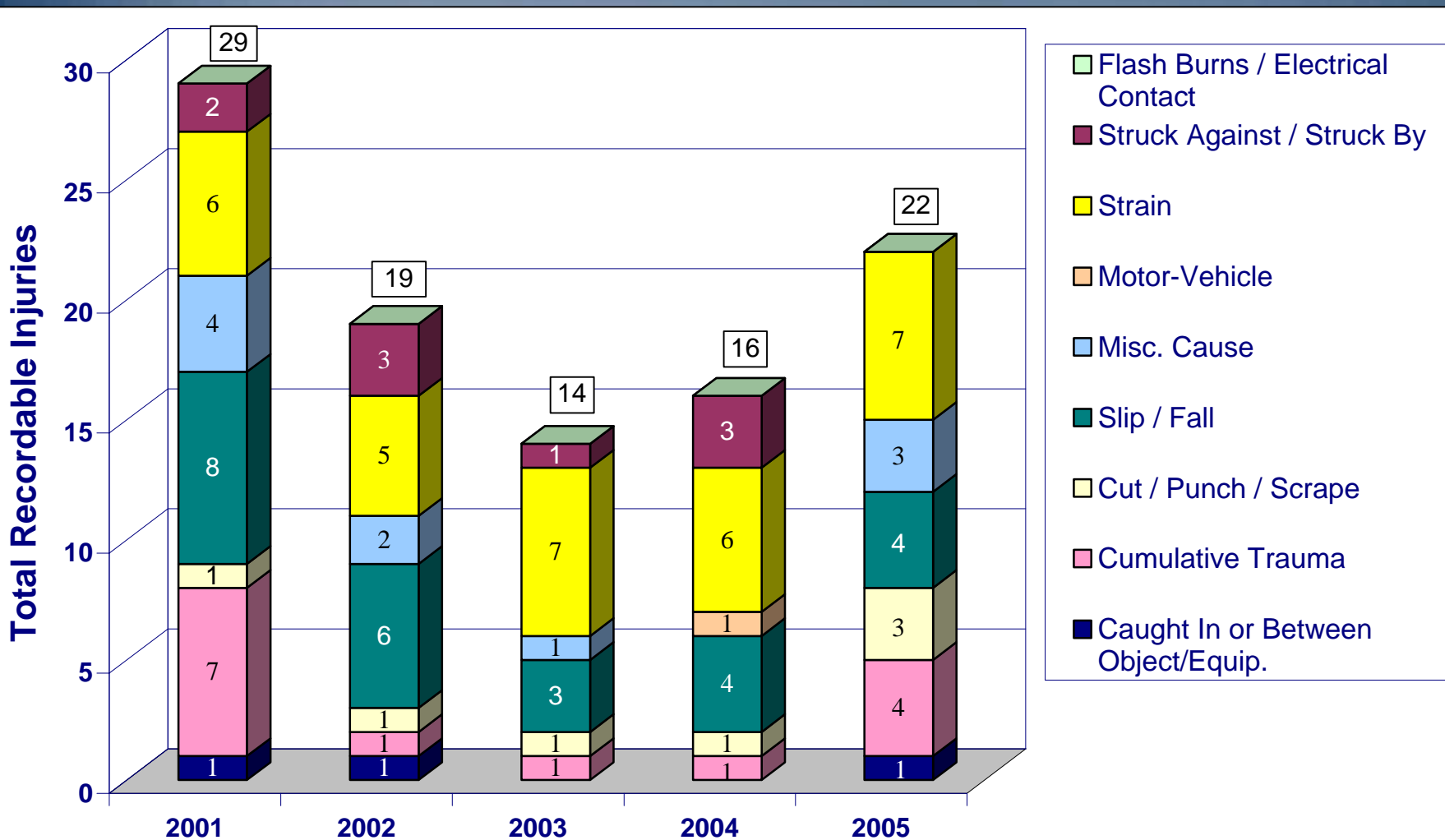


Cumulative Number of Lost Work Days*

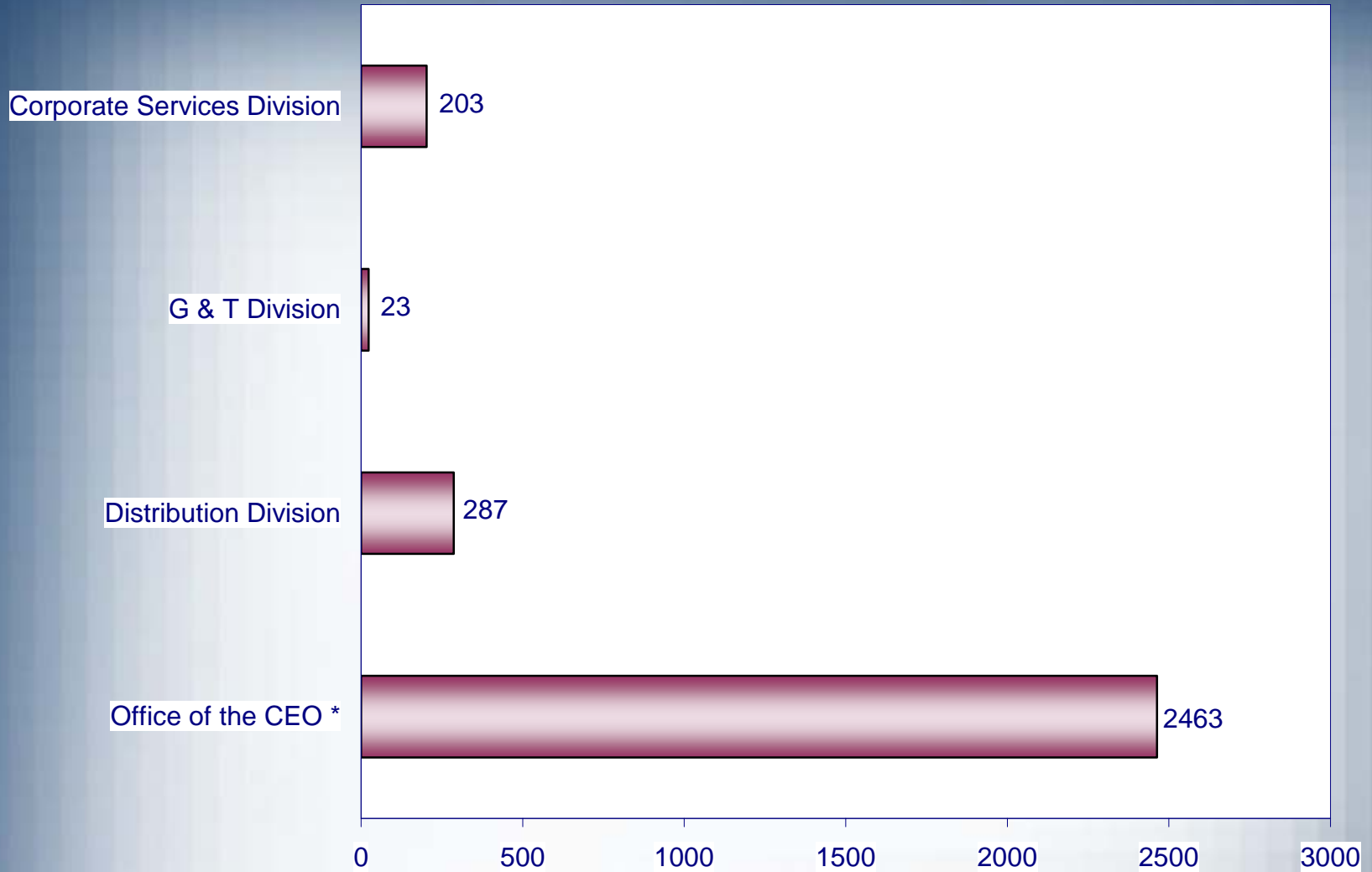


* Reflects only lost work days for injuries incurred during indicated year

Causes of Recordable Injuries Year-to-Date Through September In Each Year



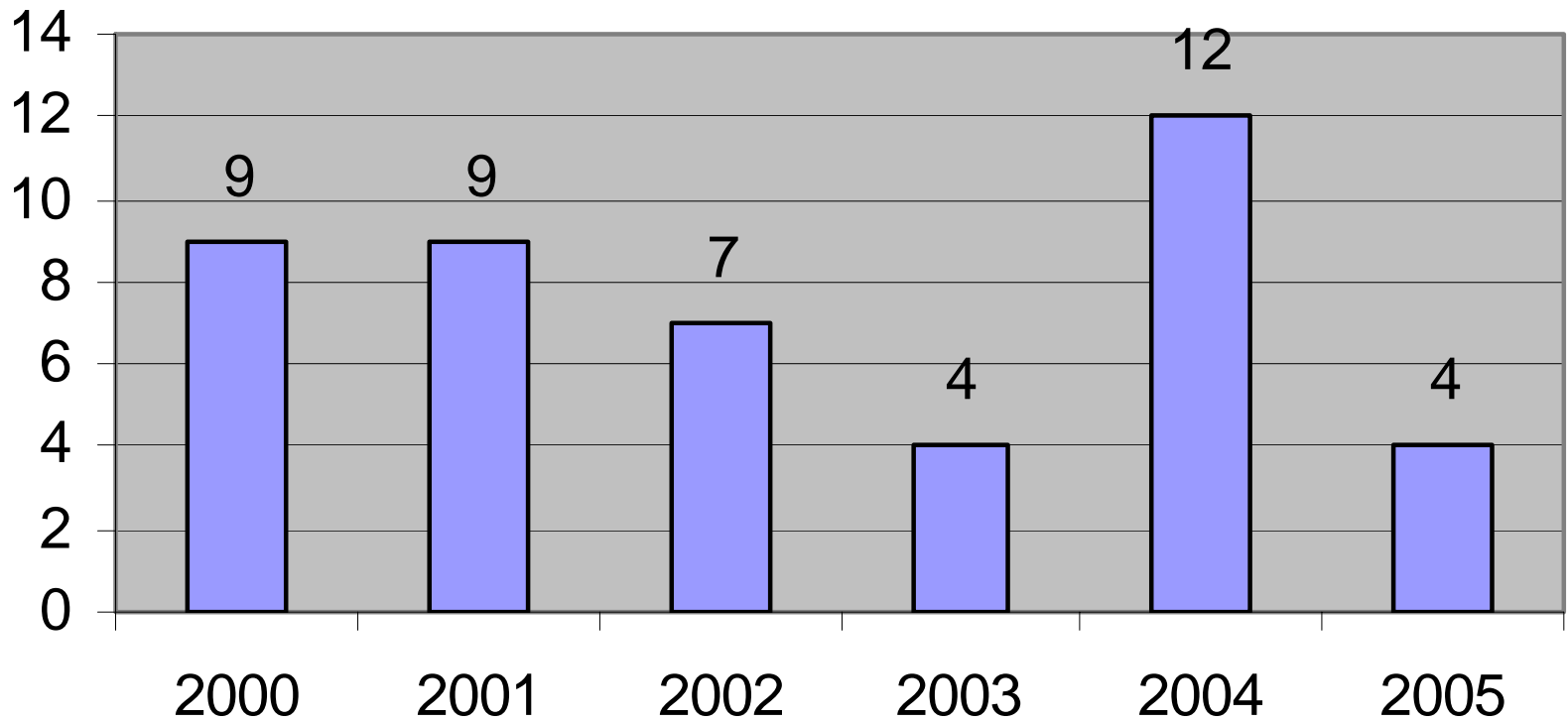
Days Since Last Lost-Time Incident



* Statistics Start January 1, 1999

Vehicle Incidents - YTD

YTD - 3rd Qtr.



Questions