



# **2008 Safety Report Third Quarter**

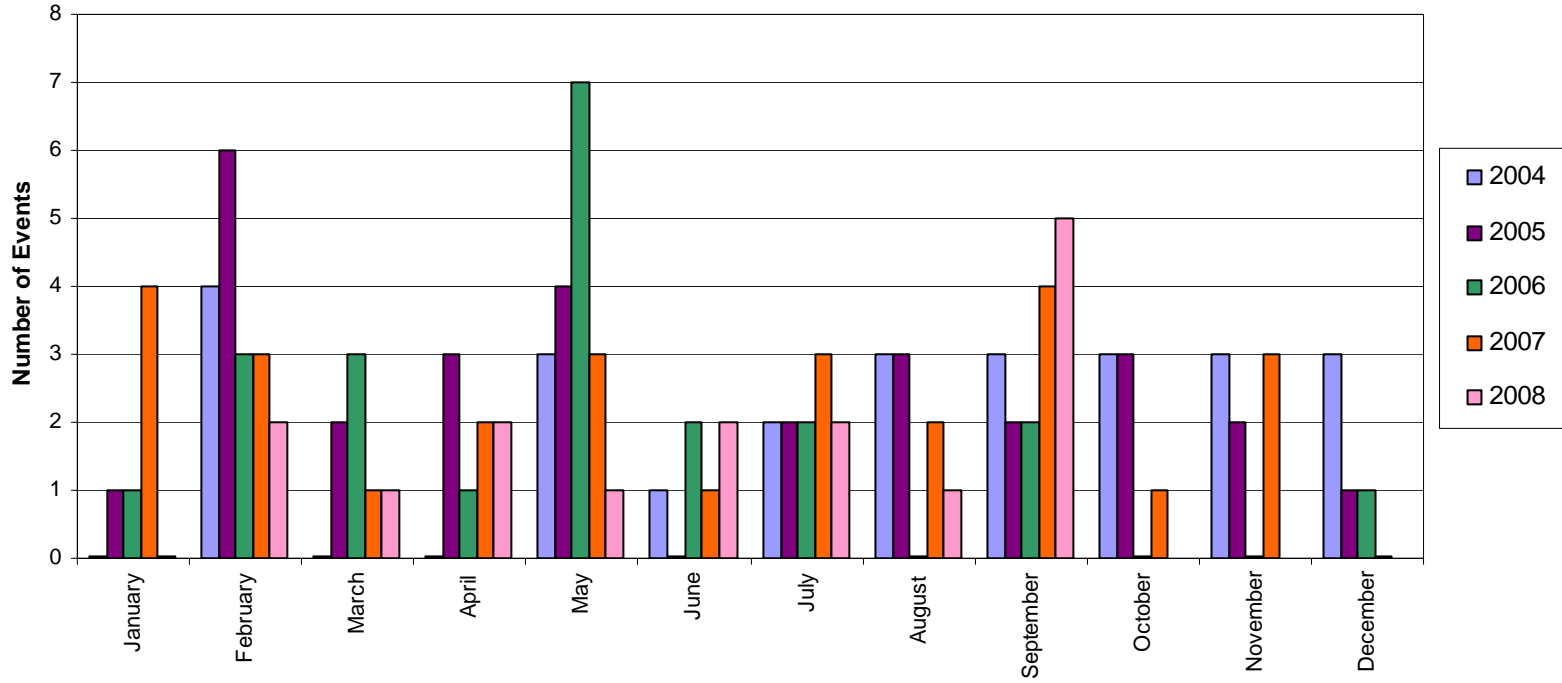
**Ken Thomas, CSP, CLCP**

**Manager, Safety & Industrial Hygiene**

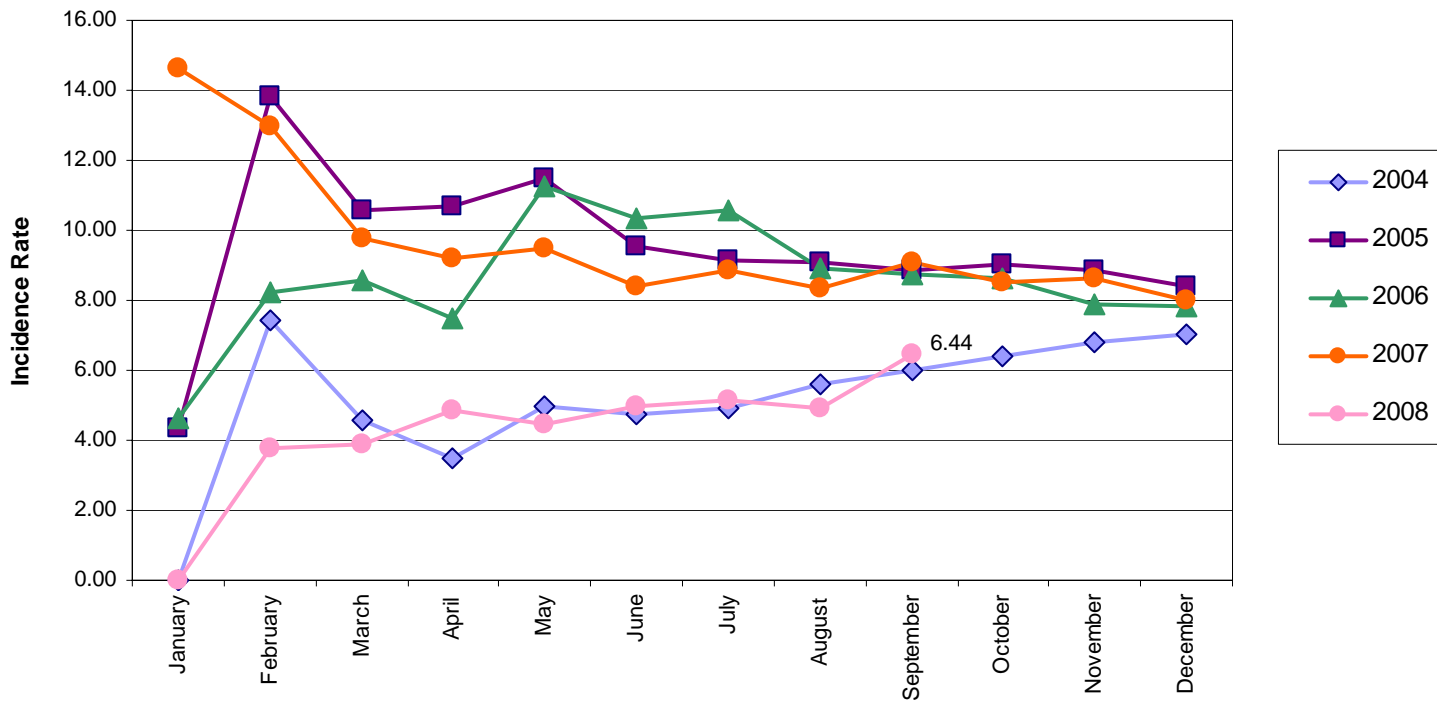
**October 22, 2008**



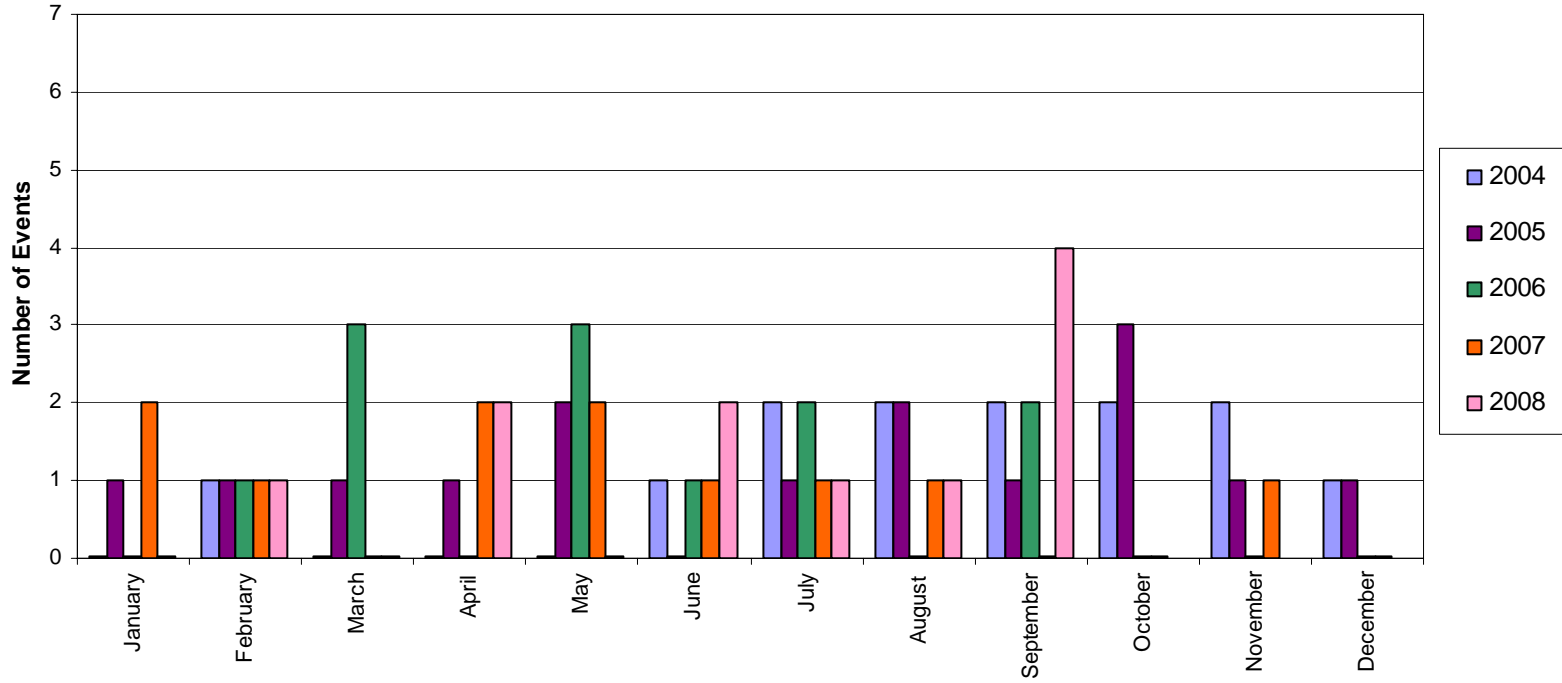
### OSHA Recordable Injuries/Illnesses September 2008



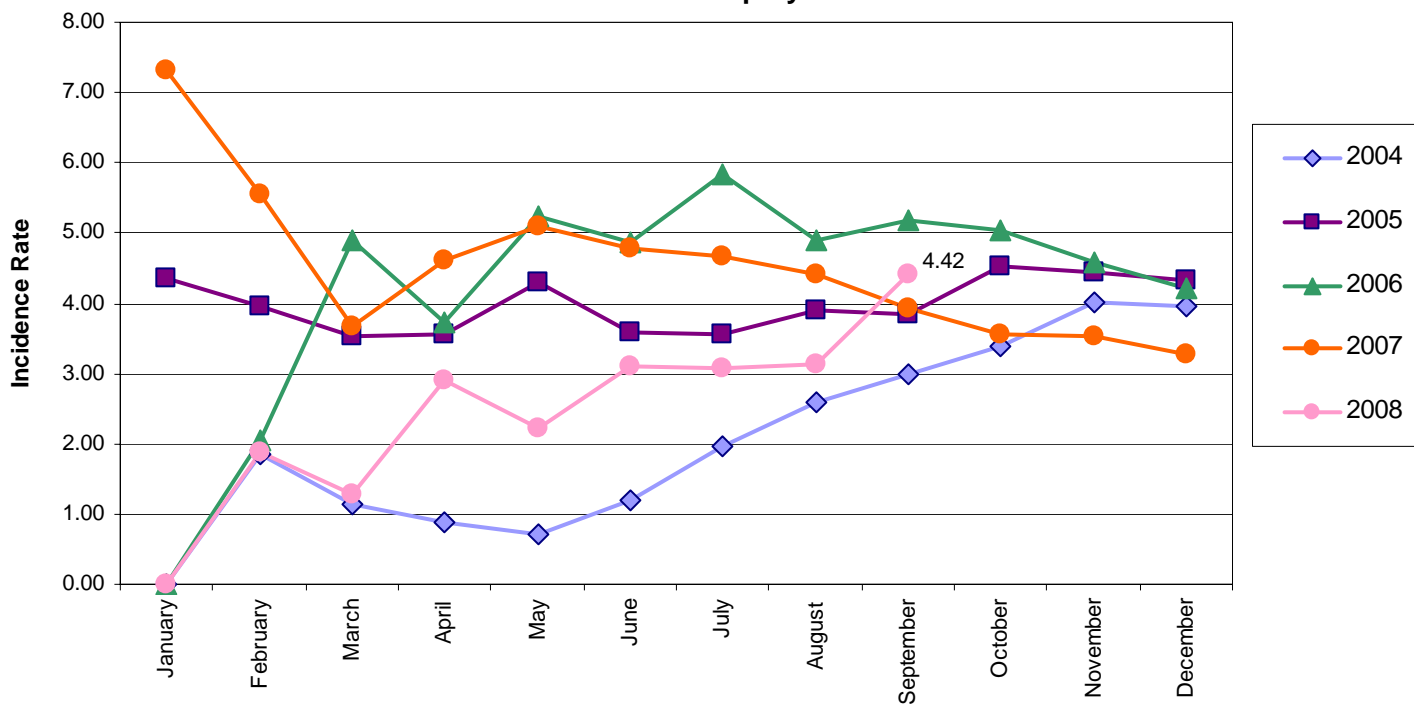
### OSHA Recordable Incidence Rate Per 100 Employees



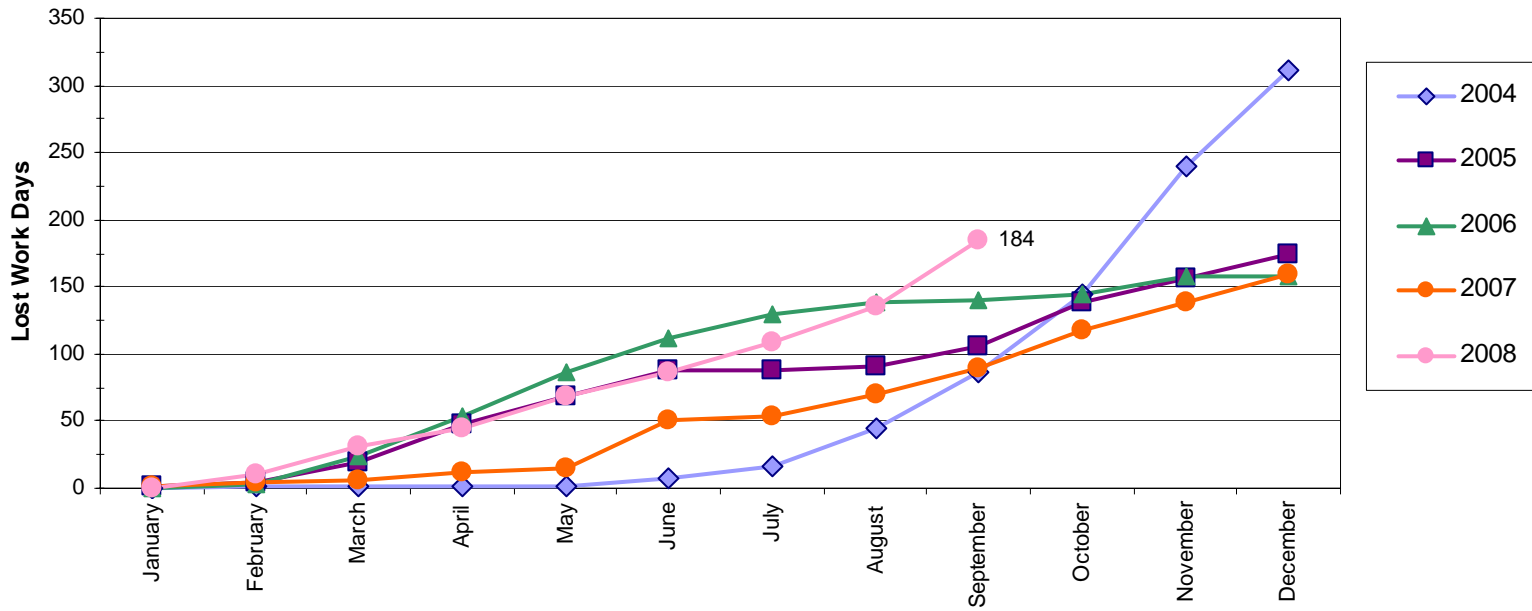
### Lost Time Recordable Injuries/Illnesses September 2008



### Lost Time Recordable Incidence Rate Per 100 Employees

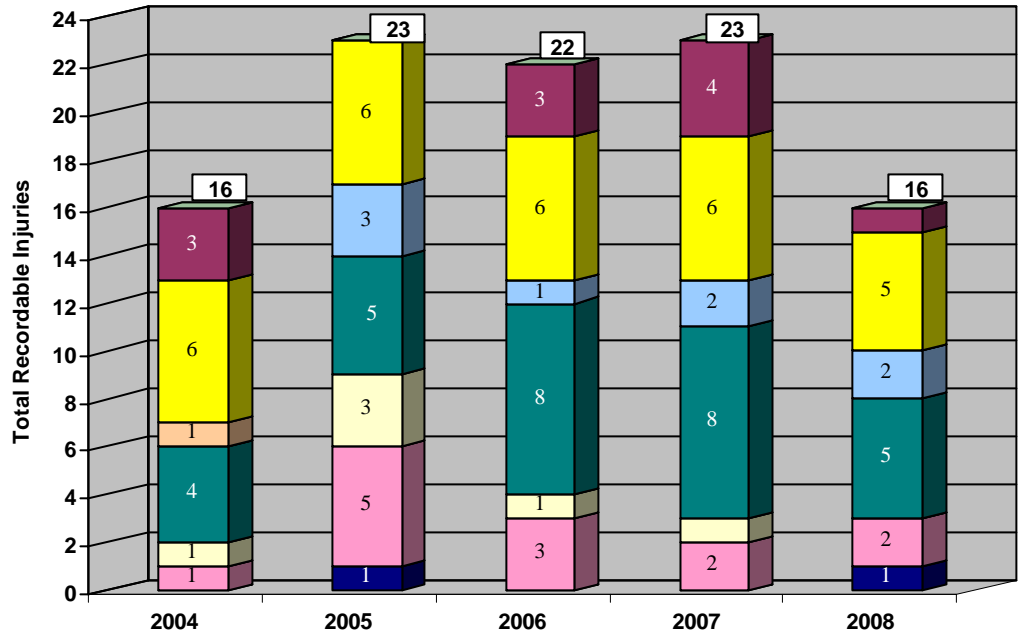


Cumulative Number of Lost Work Days\*



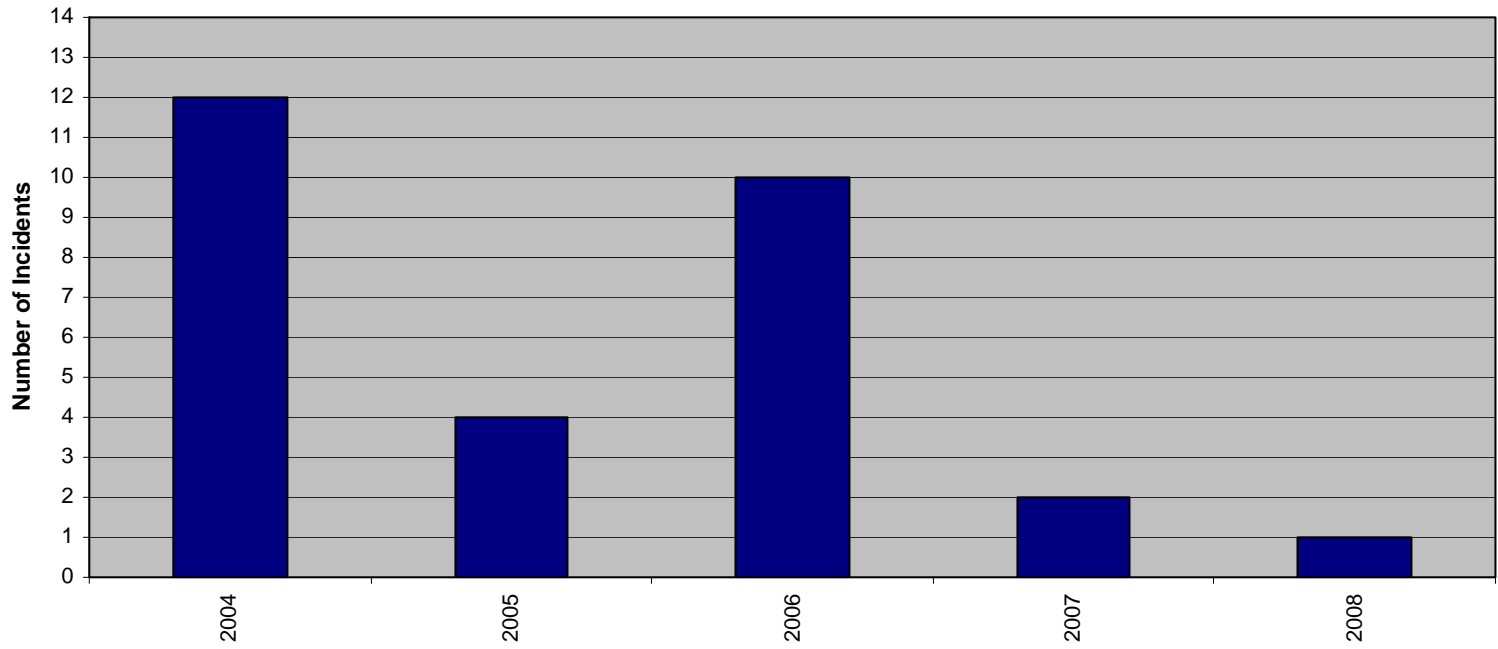
\* Reflects only lost work days for injuries incurred during indicated year

**Causes of Recordable Injuries Year-to-Date Through September In Each Year**



- Flash Burns / Electrical Contact
- Struck Against / Struck By
- Strain
- Motor-Vehicle
- Misc. Cause
- Slip / Fall
- Cut / Punch / Scrape
- Cumulative Trauma
- Caught In or Between Object/Equip.

### Recordable Vehicle Incidents Through September in Each Year



# Worker's Compensation

- Total Number of Claims Through September: 20
  - Power Delivery: 9
  - Power Supply: 9
  - Administration: 1
  - Corporate: 1
  
- Total Paid Through September 2008: **\$373,304**
  - 2008 Injuries: **\$100,037**
  - 2004-2007 Injuries: **\$273,267**



Questions?

