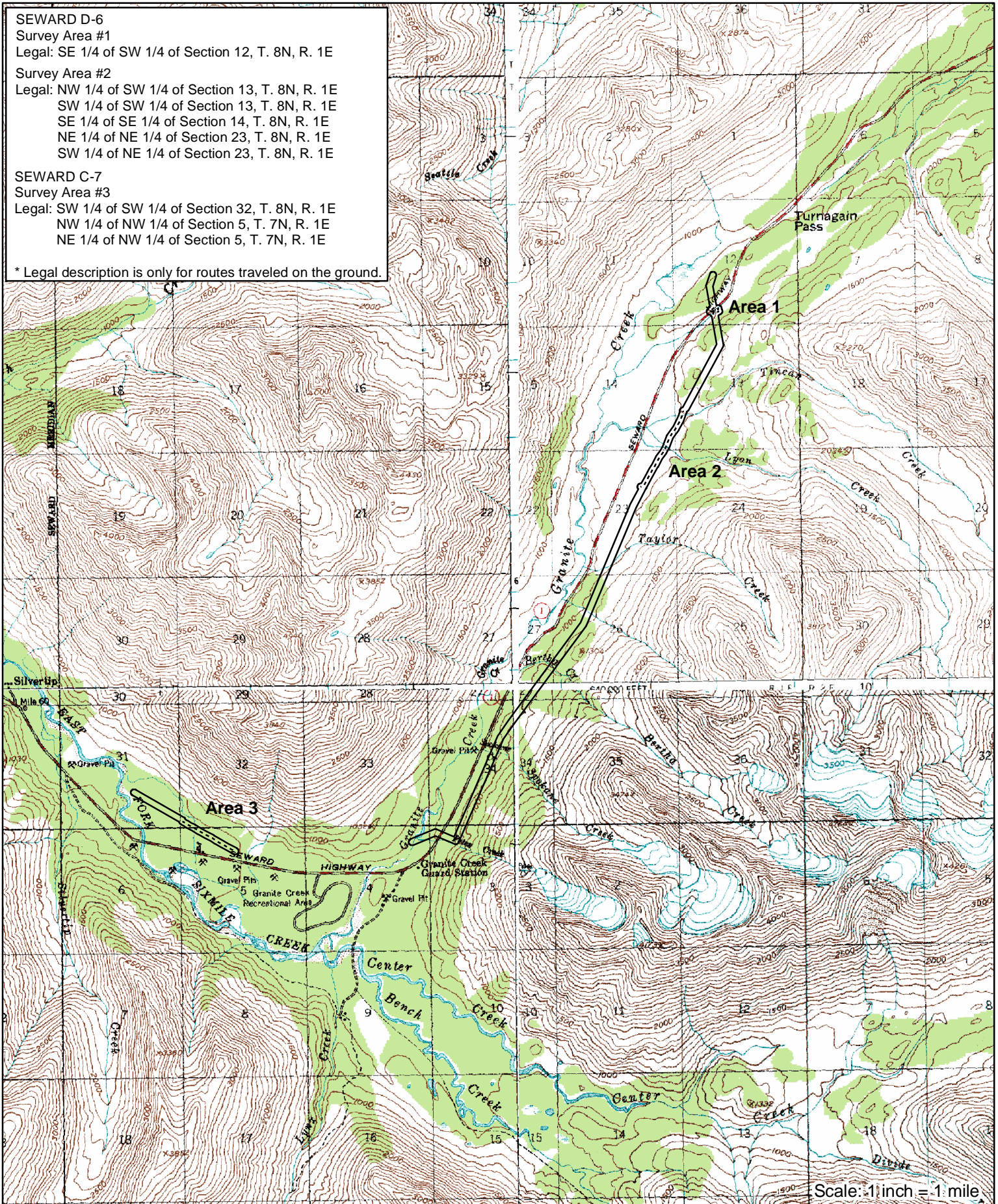


SEWARD D-6  
 Survey Area #1  
 Legal: SE 1/4 of SW 1/4 of Section 12, T. 8N, R. 1E

Survey Area #2  
 Legal: NW 1/4 of SW 1/4 of Section 13, T. 8N, R. 1E  
 SW 1/4 of SW 1/4 of Section 13, T. 8N, R. 1E  
 SE 1/4 of SE 1/4 of Section 14, T. 8N, R. 1E  
 NE 1/4 of NE 1/4 of Section 23, T. 8N, R. 1E  
 SW 1/4 of NE 1/4 of Section 23, T. 8N, R. 1E

SEWARD C-7  
 Survey Area #3  
 Legal: SW 1/4 of SW 1/4 of Section 32, T. 8N, R. 1E  
 NW 1/4 of NW 1/4 of Section 5, T. 7N, R. 1E  
 NE 1/4 of NW 1/4 of Section 5, T. 7N, R. 1E

\* Legal description is only for routes traveled on the ground.



**Sensitive Plant Survey Locations  
 Cooper Lake Hydro Project  
 August 5, 2003  
 Transmission Line**

MAP NOTES:  
 USGS Quadrangle 1951, Seward (D-6, C-7)  
 Field surveyors: Bland and Collet  
 Survey Intensity Level: 3  
 --- Route traveled on the ground  
 — Area Surveyed