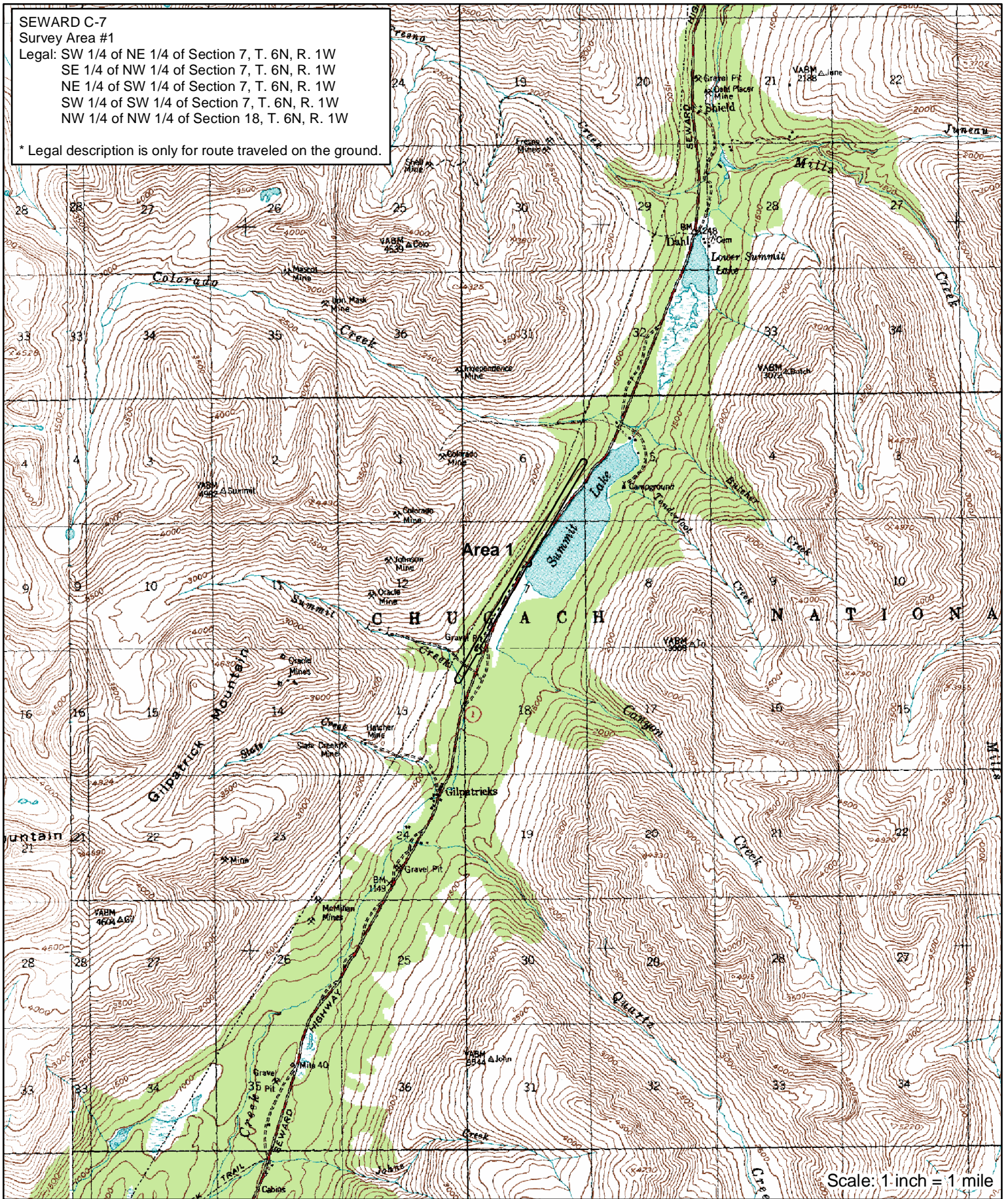


SEWARD C-7
 Survey Area #1
 Legal: SW 1/4 of NE 1/4 of Section 7, T. 6N, R. 1W
 SE 1/4 of NW 1/4 of Section 7, T. 6N, R. 1W
 NE 1/4 of SW 1/4 of Section 7, T. 6N, R. 1W
 SW 1/4 of SW 1/4 of Section 7, T. 6N, R. 1W
 NW 1/4 of NW 1/4 of Section 18, T. 6N, R. 1W

* Legal description is only for route traveled on the ground.



Scale: 1 inch = 1 mile

**Sensitive Plant Survey Locations
 Cooper Lake Hydro Project
 August 7, 2003
 Figure 1 of 3
 Transmission Line**

MAP NOTES:
 USGS Quadrangle 1951, Seward (C-7)
 Field Surveyors: Bland and Collet
 Survey Intensity Level: 3
 --- Route traveled on the ground
 — Area Surveyed