

Right Tree ... Right Place

Planting trees and shrubs can provide energy savings in addition to enhancing the beauty and value of your home

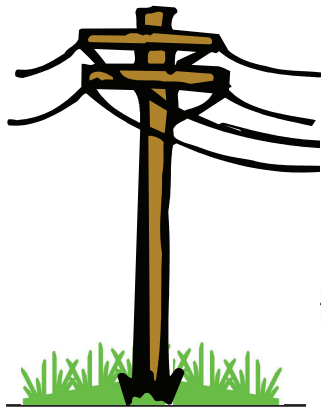
P.O. Box 196300 • Anchorage, Alaska 99519 • (907) 563-7366 • www.chugachelectric.com

CHUGACH
POWERING ALASKA'S FUTURE

Planting evergreens can create a winter windbreak for your home, and planting trees which lose their leaves in the fall can provide shade in the summer while allowing the sun to shine through on short Alaskan winter days.

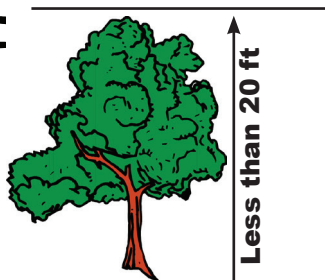
If you are thinking of planting, choose the appropriate tree or shrub to minimize conflicts between trees and utility lines. And remember, planting in the utility easement can make it difficult for Chugach or other utilities to gain access and to maintain their facilities. The result could mean your landscaping might need to be moved or trimmed.

Chugach is certified by the National Arbor Day Foundation as a Tree Line USA utility. Chugach has a certified arborist on staff who is available to help customers determine what type of plants and trees should be planted near utility rights of way. Call Chugach at 762-7660 or log on to our web site at www.chugachelectric.com for more information.



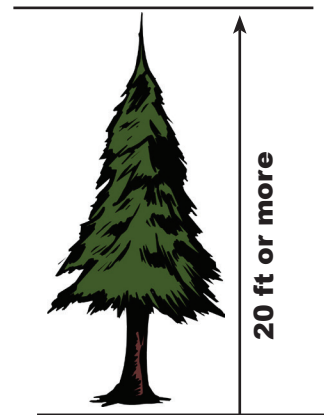
Zone 1 (within 10 ft of pole)

Grasses, annuals and non-woody perennials are recommended



Zone 2 (10 to 20 ft from pole)

Plant trees such as:
Juniper
Red Twig Dogwood
Lilacs
Spirea
Nanking Cherry



Zone 3 (20 ft or more from pole)

Plant trees such as:
Chokecherry
Birch
Scots Pine

CHUGACH
POWERING ALASKA'S FUTURE

(Rev. 04/12)