



Construction season underway

As usual, summer means construction season in Alaska. While electric utility construction can go on throughout much of the year, the pace picks up when the weather improves. Here's a summary of Chugach projects underway or planned for 2012.

Southcentral Power Project

Construction continues on the Southcentral Power Project at Chugach's headquarters complex. The new, efficient, gas-fired, combined-cycle power plant is a joint project between Chugach (70 percent) and Municipal Light &

Power (30 percent). Construction remains on schedule, with first-firing of the gas turbines expected in August and commercial operation of the plant to begin in December. Work on the adjacent International Transmission Substation that will connect SPP to the grid was largely complete by the end of June, along with a short segment of new transmission line along Electron Drive that will tie the new substation to the ML&P system.

Girdwood 2nd feeder and feeder tie

A pair of 2012 projects will improve

service for Girdwood members. Currently all 1,627 meters in the community are on a single primary feeder out of the Girdwood Substation. This means momentary disruptions are widely seen, and a single major problem can knock out power to all customers. Two projects partially funded by the legislature will address this situation. The first will install about 2.25 miles of new underground line and create a second feeder for Girdwood, while the second will install several blocks of new underground line along Arlberg Road providing an additional tie between the two feeders. Work is expected to begin after mid-July and be completed by late October.

Hope line relocation and avalanche mitigation

Two projects planned for the Hope area will improve service to customers that saw extended weather-related outages this past winter. Both projects are funded in part with money that the Federal Emergency Management Agency



A short segment of new transmission line will connect SPP to the ML&P system.

makes available to help head off problems before they develop. The Hazard Mitigation Grant Program is administered by the Alaska Department of Homeland Security & Emergency Management. The first project will relocate about 4 miles of power line from deep in the

See Construction, page 2



The gas turbines first firing at SPP will take place in August.

Chugach again named Tree Line USA utility

The Arbor Day Foundation has named Chugach a 2012 Tree Line USA utility in honor of its commitment to proper tree pruning, planting and care. This is the thirteenth year of recognition for Chugach.

Tree Line USA, a partnership between the Arbor Day Foundation and the National Association of State Foresters, recognizes public and private utilities for pursuing

practices that protect and enhance America's urban trees. Tree Line USA promotes the dual goals of delivering safe and reliable electricity while maintaining healthy community forests.

Chugach achieved the Tree Line USA by meeting five program standards. Utilities must follow industry standards for quality tree care, provide annual worker training in

best tree-care practices, sponsor a tree-planting and public education program, maintain a tree-based energy conservation program, and participate in an Arbor Day celebration.

More information about Tree City USA can be found at www.arborday.org/TreeLineUSA.

Take Note!

In June, Chugach Members received billing statements with a new member account number.

Your member account number combination is needed when using our 24/7 payment line, phone number 762-7803 or for payments via the website at www.chugachelectric.com. Additionally, if you use a bill pay service, please inform them of the new member account number.

For further information, contact Member Services at 563-7366.

Construction (cont'd from page 1)

forest to a new alignment along the highway. This project will not only replace poles and wire that have been repeatedly battered and broken by the elements over the past 50 years, it will put the line in a location much easier to access when repairs are needed. A second project will improve reliability across two avalanche chutes – in one case by raising the line and in a second, by burying a section of it.

115-kv line rebuild

Fifty years ago Chugach built a 90-mile, 115,000-volt transmission line to tie its newly constructed Cooper Lake hydroelectric project near Cooper Landing to Anchorage. At the time, it was the sole transmission link between Anchorage and the

Kenai Peninsula. Much has changed since 1962, but one thing has not: Chugach's 115-kv line is still the only transmission link between Anchorage and the Kenai Peninsula. The line has only grown in importance over the years. Among other things, it provides the only path for power from the State's Bradley Lake hydroelectric project to flow north to non-peninsula-based utilities. After five decades, this valuable regional asset is in need of significant investments to ensure it remains a reliable part of the grid. In 2011, the legislature and governor provided a \$15 million grant to rebuild a portion of the line. Chugach will use the money to rebuild about 15 miles of transmission line from Ingram Creek at Turnagain Arm,

up and through the pass and on to Silvertip near the Johnson Pass campground.

Overhead-to-underground conversions

Each month Anchorage customers of utilities with overhead lines pay surcharges to help accelerate the conversion of lines from overhead to underground. Under an Anchorage Municipal ordinance, Chugach assesses a 2 percent charge to its retail customers in the MOA which raises about \$3 million per year. Chugach uses these monies to replace existing overhead facilities with new underground lines. In 2012, Chugach plans four overhead-to-underground projects along Victor Road, along Jewel Lake

Road, near the Debarr Substation and in Girdwood. {1123746}

More information on many of the projects can be found at <http://www.chugachelectric.com/inside-chugach/projects>.

Recycle your CFLs



Compact fluorescent light bulbs (CFLs) are becoming increasingly popular for their significant energy

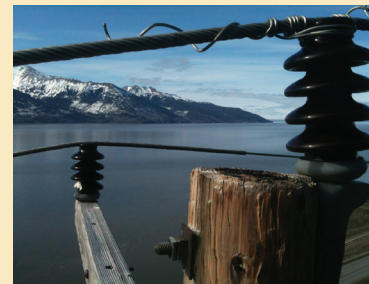
savings and relatively low cost. However, they must be disposed of properly when they reach the end of their life. CFLs are safe when in-

tact, but do contain a small amount of mercury. If the CFL is broken the mercury can be harmful to people, animals or the environment. Therefore CFLs should not be disposed of in regular trash containers. Instead take them to a special collection station. There are many locations throughout Anchorage, including one in the Chugach Member Services lobby. Some home improvement and electronics stores also

accept CFLs. The destination for many CFLs in Anchorage is Total Reclaim, located at 12101 Industry Way #C4, which then ships them to Seattle, where nearly every part of the bulb is recycled and turned into new products.

Concerned about bulb breakage? Visit the Environmental Protection Agency's website for detailed clean-up instructions at www.epa.gov/cfl/cficleanup.html.

Job with a view



Chugach crews recently removed poles and wires from an unused distribution line between McHugh Creek and Rain-bow Point along the cliffs of the Seward Highway.

Questions? Contact Chugach's Energy Efficiency and Conservation Specialist at 762-4336 or visit Total Reclaim's website at www.totalreclaim.com/mercury.html.

Contact us

Hours	Monday - Friday 8 a.m. - 5 p.m.
Main number	563-7494
Toll free	(800) 478-7494
Member Services	563-7366
Member Services fax	762-4678
24-hour payment line	762-7803
Credit	563-5060
Power theft hotline	762-4731
Danger tree hotline	762-7227
Street light hotline	762-7676
Underground locates	278-3121
Regulatory Commission of AK	(800) 390-2782
or	276-6222
To report a power outage	
In Anchorage	762-7888
Outside Anchorage	(800) 478-7494

Corporate Mission: Through superior service, safely provide reliable and competitively priced energy.

Corporate vision: Powering Alaska's future

Personnel policy: It is a policy of Chugach Electric Association, Inc., to recruit, hire, train, compensate and promote persons without regard to race, color, religion, national origin, sex, marital status, pregnancy, parenthood, disability, veterans status, age or any other classification protected by applicable federal, state, or local law." Chugach is also an equal opportunity/affirmative action employer. Current openings are posted on the employment page at <http://chugachelectricapplications.com>. Chugach only accepts applications for open vacancies.

The Chugach Outlet

A Publication of Chugach Electric Association, Inc.
5601 Electron Drive • P.O. Box 196300 • Anchorage, Alaska 99519-6300

Monthly residential service costs (based on 700 kwh)

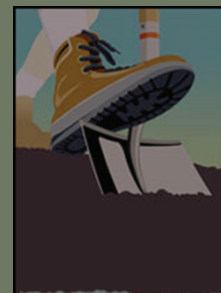
Customer charge/month	\$ 8.00
Energy charge \$0.07054 x kwh =	\$49.38
Fuel \$0.05473 x kwh =	\$38.31
Purchased power \$0.00559 x kwh =	\$ 3.91
<small>(Fuel & purchased power rates effective 7/1/12-9/30/12)</small>	
Subtotal	\$ 99.60
2% MOA Undergrounding Charge =	\$ 1.99
RCC \$0.000560 x kwh =	\$ 0.39
Total bill	\$101.98

Member number
hide-n-seek

Find your member number (in brackets) in the Outlet and get a \$100 credit on your electric bill. Call Chugach's service center at 563-7366 to claim your prize.

CHUGACH
POWERING ALASKA'S FUTURE

Planning to dig
for a project?
Call 811 at least
2 business days in
advance for free locates.



Know what's
below.
Call before
you dig.

